



Antonis Lempesis, Stefania Martziou, Dimitris Pierrakos
ATHENA Research Center



Content Provider Dashboard

Repositories interoperability
and content enrichment



BECOMING PART OF EOSC: LEARN HOW TO PREPARE YOUR SERVICES
| October 18 2022



@openaire_eu



Your data is valuable. Get connected. Participate

The Provide Dashboard is a one-stop-service where content providers interact with OpenAIRE and become a building block of a global Open Research community. A gateway to the European Open Science Cloud.



SIGN IN

PROVIDE Dashboard brings all your data together

Content Provider Dashboard



UM

- R Register
- V Validator
- N Notifications



Universidade do Minho: RepositoriUM

DASHBOARD UPDATE AGGREGATION HISTORY ENRICHMENTS USAGE STATISTICS

Records collected on 2020-07-07

64,003



Enrichments

324,213



Downloads

2,482,565



Views

1,694



Aggregation History

- 2021-01-04

Aggregation stage
TRANSFORM

Number of records
22,903
- 2021-01-04

Aggregation stage
COLLECT

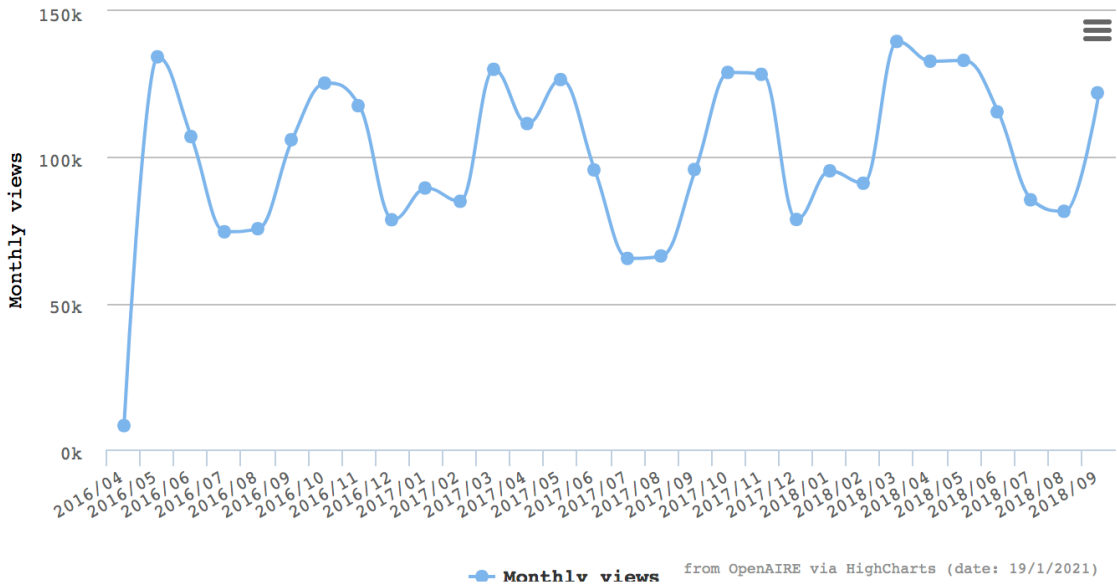
Collection mode
REFRESH

Number of records
66,955
- 2020-12-20

Aggregation stage
TRANSFORM

Number of records
22,789

Usage Statistics



Last month's reports

- AR1
- IR1
- RR1
- BR1
- BR2

REPOSITORIES

Universidade do Minho: Reposit...

Hide Controls





Interoperable metadata is the key to efficient content exchange

Follow the OpenAIRE guidelines to expose your content using global standards.

Use OpenAIRE's Validation Service to check compliance with the recommendations.

VALIDATE

Validate your datasource



Literature repository



Data repository



CRIS systems

Guidelines for Open Science content providers

Publications

Thematic repositories
Institutional repositories
Electronic journals

Research Data

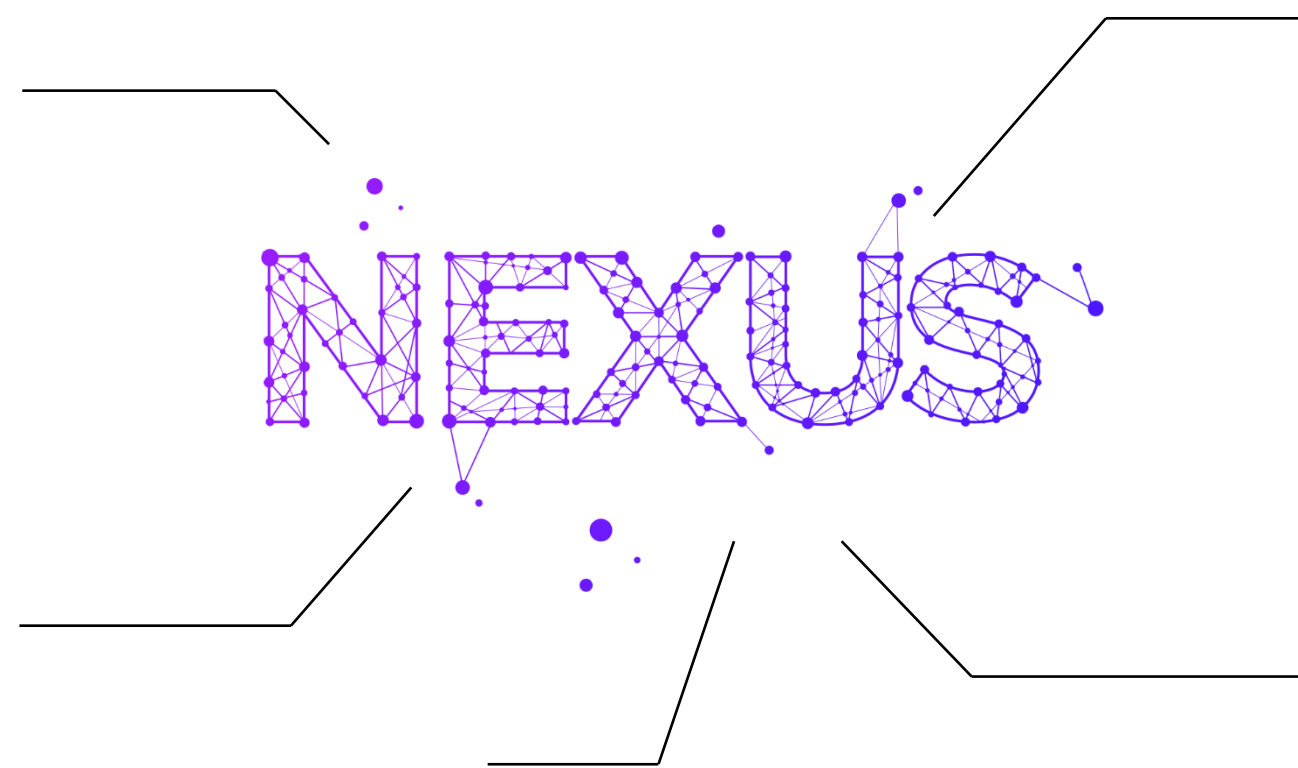
Data repositories
Generic repositories
Thematic & institutional repositories

Research Software

Software repositories
Generic repositories

Other Research Outputs

General purpose repositories



Research Information

CRIS

<https://guidelines.openaire.eu>

Why use the OpenAIRE Guidelines

- Improved metadata interoperability
- Support FAIR Data principles
- Describe different types of research results by defining different 'profiles'
 - Reuse existing templates (Dublin Core, DataCite)
 - Reuse and enrich (where needed) existing dictionaries and ontologies (eg Types of PIDs)

VALIDATOR

R Register

V Validator

Validate

Validation History

N Notifications

REPOSITORIES

Universidade do Minho: Reposit...

Hide Controls

Run compatibility test

- 1 Select datasource
- 2 Select guidelines
- 3 Select parameters
- 4 Finish

Select base URL from one of your registered repositories

https://repositorium.sdum.uminho.pt/oai/openaire

or enter new

Select repository/journal

Select from the list, or enter the base OAI URL of the repository/journal. The repository's/journal's published sets are exposed in a later stage and you may select one for the compatibility tests.

< PREVIOUS

NEXT >

VALIDATOR

UM



R Register

V Validator

Validate

Validation History

N Notifications

REPOSITORIES

 Universidade do Minho: Reposit...

◀ Hide Controls

Run compatibility test

- 1 Select datasource
- 2 Select guidelines
- 3 Select parameters
- 4 Finish

- OpenAIRE For Literature Repositories (OpenAIRE 3.0)
- OpenAIRE For Literature Repositories (OpenAIRE 2.0)
- OpenAIRE For Literature Repositories (Basic - ex DRIVER)
- NotInUse - OpenAIRE For Literature Repositories (OpenAIRE 4.0)

^ Hide Content and Usage Rules

Select / Deselect All Content Rules

- Field Referenced Dataset (R)
- Field Referenced Publication (R)
- Field License Condition (R)
- Field Audience (R)
- Field Contributor (R)
- Field Description (MA)
- Field Format (R)
- Field Publication Type (M)
- Field Publication Version (R)
- Field Source (R)
- Field Subject (MA)
- Field Access Level (M)
- Field Date of Publication (M)
- Field Language (R)
- Field Resource Identifier (M)
- Field Alternative Identifier (R)
- Field Creator (MA)

Select / Deselect All Usage Rules

- Use of OAI-PMH: 'openaire' or 'ec_fundedresources' or 'driver' set must exist (M)
- Use of OAI-DC (M)

< PREVIOUS

NEXT >

Select guidelines

You may apply two types of compatibility tests on your repository:

- Content: specific to the content/format of the dc fields
- Usage: specific to the implementation of OAI-PMH

You may select from a predefined set of rules (OpenAIRE for Literature Repositories, OpenAIRE for Data Archives) or customize them according to your needs.

VALIDATOR

UM



R Register

V Validator

Validate

Validation History

N Notifications

REPOSITORIES

Universidade do Minho: Reposit...

Hide Controls

Run compatibility test

- 1 Select datasource
- 2 Select guidelines
- 3 Select parameters
- 4 Finish

Number of records to validate

All Custom

Validation Set

All sets ▼

Would you like to group your results by a specific field?

No Yes

XPath Examples: 1. //header/setSpec 2. //record/metadata//*[name()='dc:language']

Select parameters

You may define an upper limit on the # of records tested. This is highly recommended for first time users, or when re-checking after the implementation of automated changes.

Select one of the repository's/journal's exposed sets.

You may also group your results by a specific field. This is quite useful when validating an aggregator and you know in advance which is the field that distinguished among data sources.

< PREVIOUS

FINISH

VALIDATOR

UM



R Register

V Validator

Validate

Validation History

N Notifications

REPOSITORIES

Universidade do Minho: Reposit...

Hide Controls

Run compatibility test

1 Select datasource

2 Select guidelines

3 Select parameters

4 Finish




Validation has begun

You will be notified by email with the results of the compatibility test.

- R Register
- V Validator ^
- Validate
- Validation History**
- N Notifications

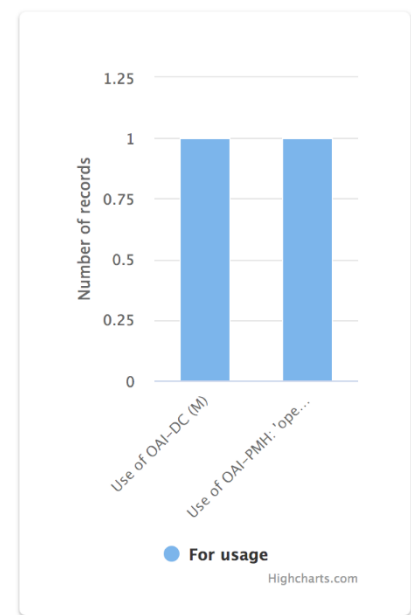
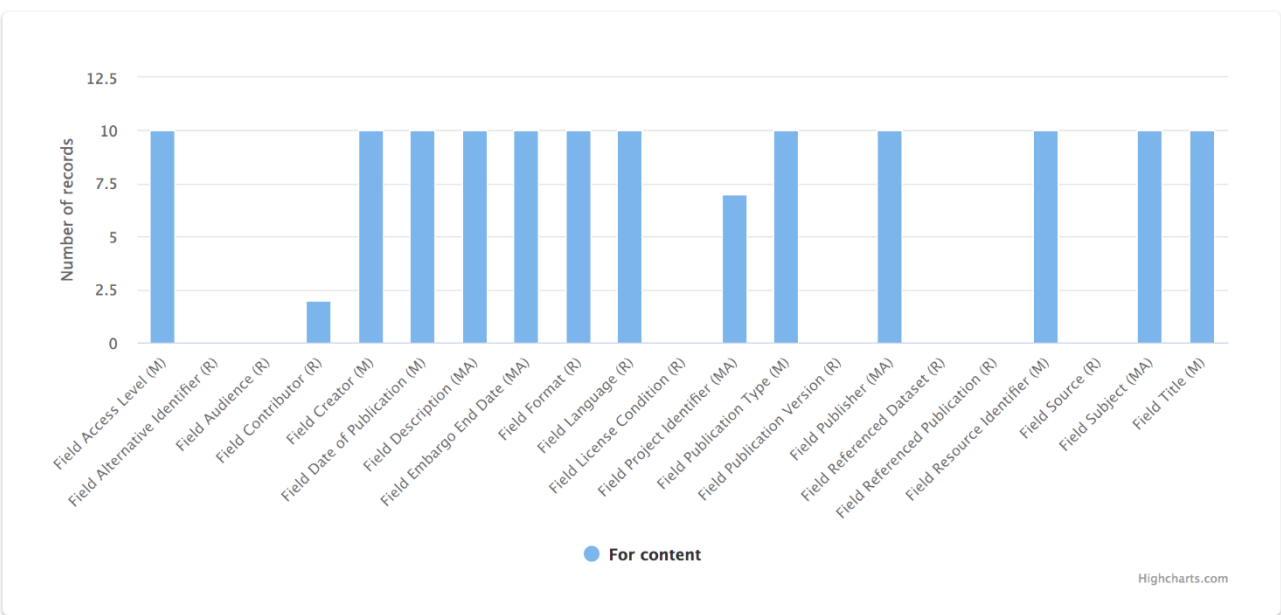
REPOSITORIES

-  Universidade do Minho: Reposit...

Validation results for

<https://repositorium.sdum.uminho.pt/oai/opensource>

by repositorium@sdum.uminho.pt



Validation Results

METADATA VALIDATOR

Helping you apply the OpenAIRE Guidelines



provide.openaire.eu






FOR CONTENT FOR USAGE

RULE NAME	RULE DESCRIPTION	RULE WEIGHT	# OF RECORDS	STATUS
Field Access Level (M)	Use terms from the info:eu-repo-Access-Terms vocabulary. View guideline	5	10/10	✔
Field Alternative Identifier (R)	List alternative identifiers for this publication that are not the primary identifier (repository splash page), e.g., the DOI of publisher's version, the PubMed/arXiv ID. View guideline	5	0/10	! View Warnings
Field Audience (R)	A class of entity may be determined by the creator or the publisher or by a third party. View guideline	2	0/10	! View Warnings
Field Contributor (R)	Examples of contributors are: a supervisor, editor, technician or data collector. The DC element "contributor" describes the scientist(s) that has/have made contributions to the given scientific output, not as a primary creator or (commercial) publisher. View guideline	2	2/10	! View Warnings

Score for content: 98

Score for usage: 100

Details

- Compatibility Test
-  For Literature Repositories (3.0) Guidelines
-  none Validation set
-  2021-01-28 13:13:35 Started
-  2021-01-28 13:13:40 Ended
-  5 secs Duration

Validation History



UM

R Register

V Validator

Validate

Validation History

N Notifications

Previous validations

Filter by job type

--none selected--

Jobs per page

10

ALL JOBS (104)

SUCCESSFUL (55)

FAILED (49)

ONGOING (0)

REPOSITORY	VALIDATION TYPE	STATUS	SCORE	STARTED	GUIDELINES	ACTIONS
https://repositorium.sdum.uminho.pt/oai/openaire	OAI Content OAI Usage	finished finished	98 100	2021-01-28 13:13:35	For Literature Repositories (3.0)	View Results > Resubmit Job ↻
https://repositorium.sdum.uminho.pt/oai/request	OAI Content OAI Usage	finished finished	100 100	2020-12-16 23:25:36	For Literature Repositories (4.0)	View Results > Resubmit Job ↻
https://repositorium.sdum.uminho.pt/oai/request	OAI Content OAI Usage	finished finished	0 100	2020-11-20 16:26:47	For Literature Repositories (4.0)	View Results > Resubmit Job ↻
https://repositorium.sdum.uminho.pt/oai/openaire	OAI Content OAI Usage	finished finished	98 100	2020-11-19 23:51:18	For Literature Repositories (3.0)	View Results > Resubmit Job ↻
https://repositorium.sdum.uminho.pt/oai/request	OAI Content OAI Usage	finished finished	100 100	2020-11-19 23:40:18	For Literature Repositories (4.0)	View Results > Resubmit Job ↻
https://repositorium.sdum.uminho.pt/oai/driver	OAI Content OAI Usage	finished finished	92 100	2020-11-19 21:54:08	For Literature Repositories (Basic)	View Results > Resubmit Job ↻
https://repositorium.sdum.uminho.pt/oai/openaire	OAI Content OAI Usage	finished finished	98 100	2020-11-19 21:53:39	For Literature Repositories (3.0)	View Results > Resubmit Job ↻

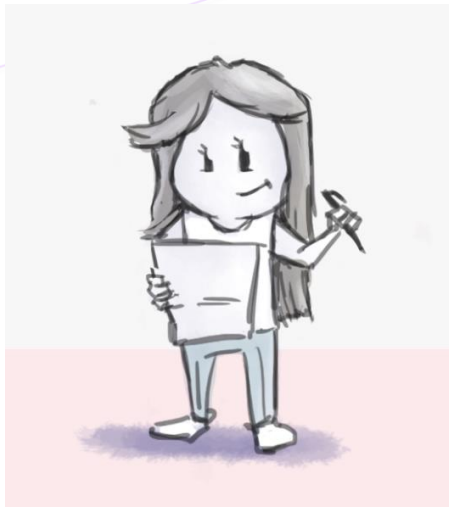
REPOSITORIES

Universidade do Minho: Reposit...

Hide Controls



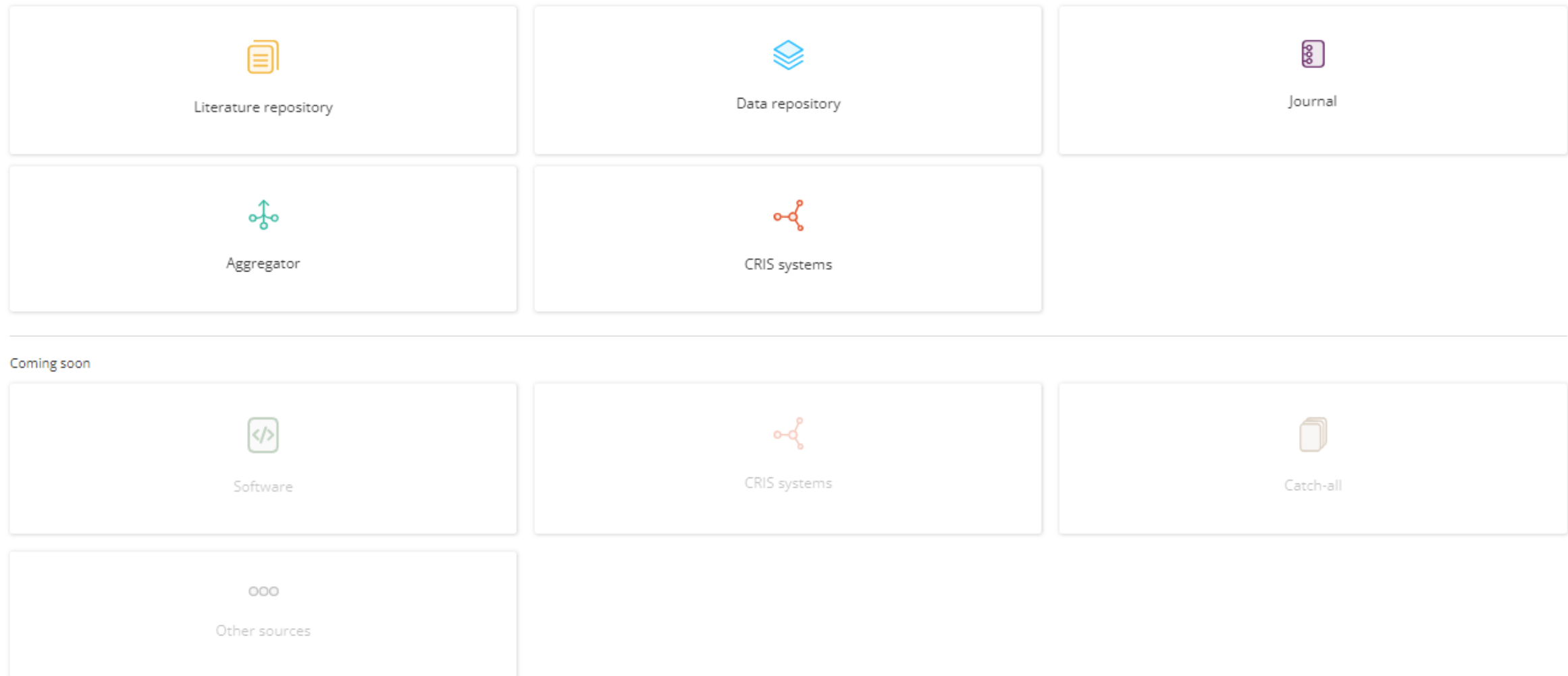
BECOMING PART OF EOSC: LEARN HOW TO PREPARE YOUR SERVICES | October 18 2022



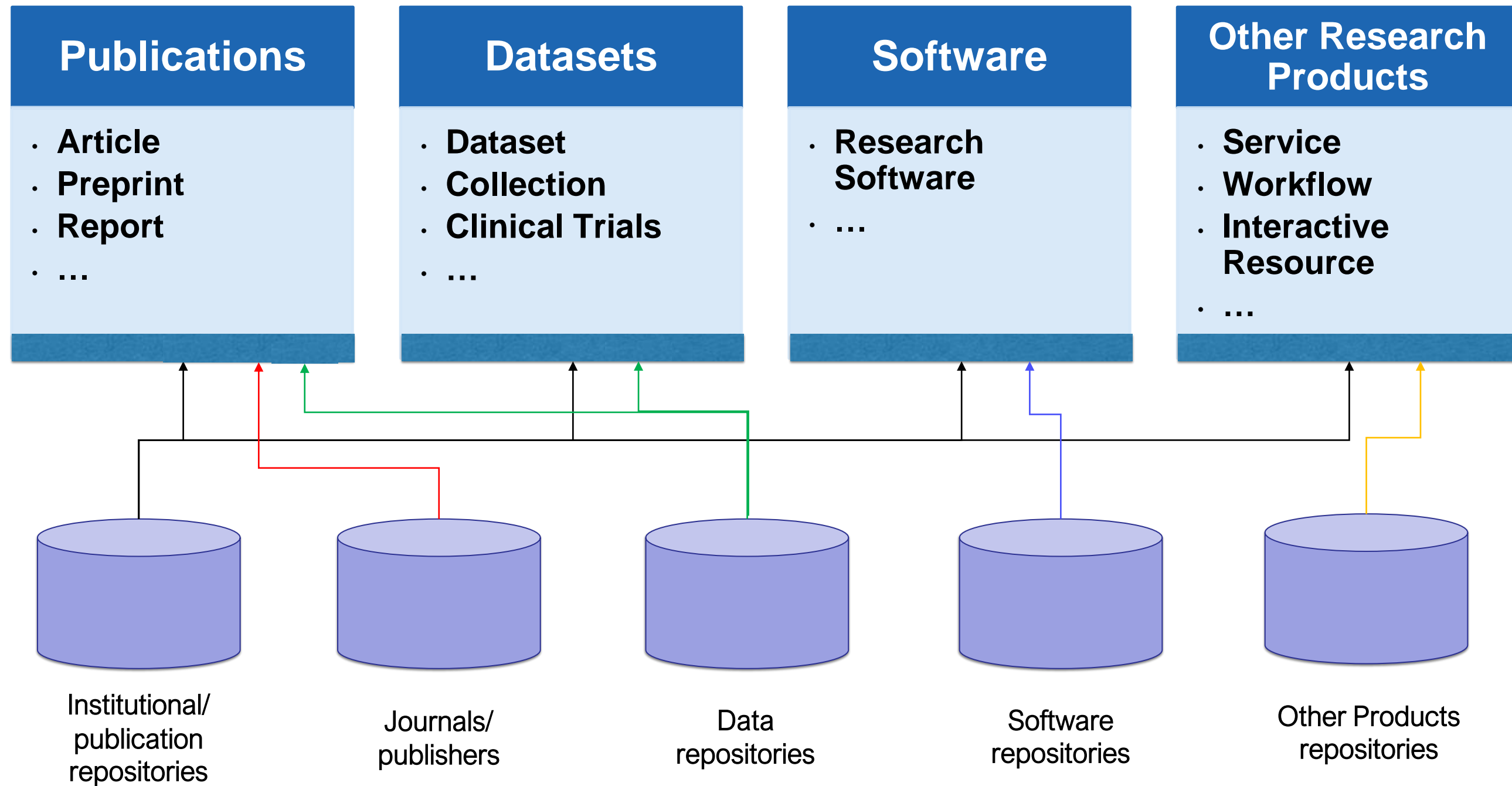
Rich Wider Audiences

Register your repository in OpenAIRE and join a global network of repository and content providers.

REGISTER



Scientific outputs collection



Repositories registration

- Use of established registries (where possible)
 - OpenDOAR, Re3Data
- Automatic content validation
- Support of OAI-PMH and ResourceSync protocols
- Set metadata cleanup and transformation rules per repository.

REGISTER

Register your datasource

R Register

V Validator

Validate

Validation History

N Notifications

- 1 Select Repository
- 2 Register data source
- 3 Register interface
- 4 Finish

Please make sure your repository is registered in [OpenDOAR](#).
Last Updated: 2021-01-27

Select country

Greece

OpenDOAR Repositories in Greece

Name of repository

- "Ergani - Historical Archive of Aegean" Repository
- ACMAC
- AUTH Library - Prothiki
- Acropolis Educational Resources Repository
- Archipelago
- Aristotle University of Thessaloniki Institutional Repository - IKEE Registered
- Asklepius - The Health Sciences Repository of Asklepieio Voulas Hospital

< PREVIOUS

NEXT >


Info

Use the form on the left to add your repository or journal in OpenAIRE. If you want to find more information about this process [click here](#).

The official repository/journal administrator (his/her email address being retrieved from the OAI-PMH verb **Identify**) will be contacted and informed about registration request. So please make sure that you are either this person or have access to the email address, or that you have notified them.

For any problems or questions please contact the [OpenAIRE helpdesk](#).

REPOSITORIES

 Universidade do Minho: Reposit...

Hide Controls

REGISTER

UM



R Register

V Validator

Validate

Validation History

N Notifications

REPOSITORIES



Universidade do Minho: Reposit...

Hide Controls

Register your datasource

- 1 Select Repository
- 2 Register data source
- 3 Register interface
- 4 Finish

Basic information

The following fields are completed by OpenDOAR.
If you want to edit them, you can do it by using this [OpenDOAR link](#)

Software Platform (*)

[Other] (enter name below)

dspace

Official Name (*)

Acropolis Educational Resources Repository

Description (*)

This repository contains educational resources produced by the Information and Education Department of the Acropolis Restoration Service which represent and interpret the archaeological site and the Acropolis Museum. The interface is in English and Greek.

Country (*)

Greece

Longitude (*)

< PREVIOUS

NEXT >

Info

The following information has been collected from OpenDOAR. Please check it and correct it if necessary. By clicking on "Register Repository" (at the end of this form) your information will be sent to OpenAIRE.

Please remember to add a metadata interface (Step 3), which is needed to collect your records.

REGISTER

AL

- R Register
- V Validator
- N Notifications

Register your datasource

- 1 Select Repository
- 2 Register data source
- 3 Register interface
- 4 Finish

The harvesting settings are valid!

Base OAI-PMH URL (*)

Validation Set
 Choose existing

or a custom one

Desired Compatibility Level (*)

Current Compatibility Level
UNKNOWN




Comments (What else do we need to know?)


Add New Interface

< PREVIOUS

FINISH

REPOSITORIES

- 
- 
- 

ADMIN

- H Help Texts
- R Registrations
- M Metrics

Hide Controls

Monitor content aggregation



UM

- R Register
- V Validator
- N Notifications



Universidade do Minho: RepositoriUM

DASHBOARD UPDATE AGGREGATION HISTORY ENRICHMENTS USAGE STATISTICS

2021-01-27

Aggregation stage
TRANSFORM

Number of records
22903

2021-01-04

Aggregation stage
TRANSFORM

Number of records
22903

2021-01-04

Aggregation stage
COLLECT

Collection mode
REFRESH

Number of records
66955

2020-12-20

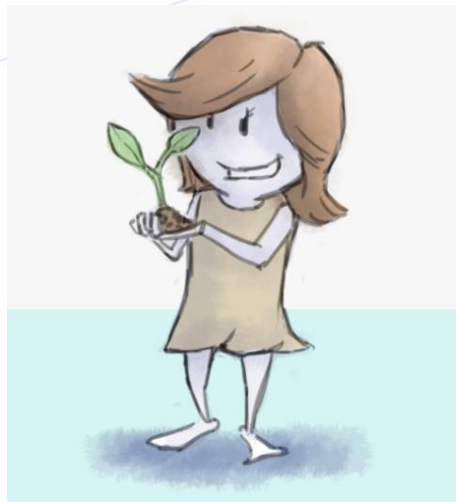
Aggregation stage

REPOSITORIES

Universidade do Minho:
Reposit...

Hide Controls





Improve your metadata

The Metadata Enrichment Service (Broker service) offers rich additional information for research data.

ENRICH

Find what interests you and register to enrich your repository.

Types of information that can enrich the metadata :

- **Persistent identifiers**
- **Open Access Versions**
- **Projects**
- **Subjects**
- **Abstracts**





Open Science is powered by open data for impact

An open statistics service created by using your own usage statistics

MEASURE

Generate reports on your repository usage statistics (both repo & article level):



Article Report 1, number of successful article download requests by month and repository.



Item Report 1, number of successful item download requests by month and repository.



Repository Report 1, number of successful item downloads for all repositories participating in the usage statistics service.



Book Report 1, number of successful title requests by month and title.



Book Report 2, number of successful section requests by month and title.



Usage Counts Service Features

Recording of views and downloads / collection of COUNTER reports

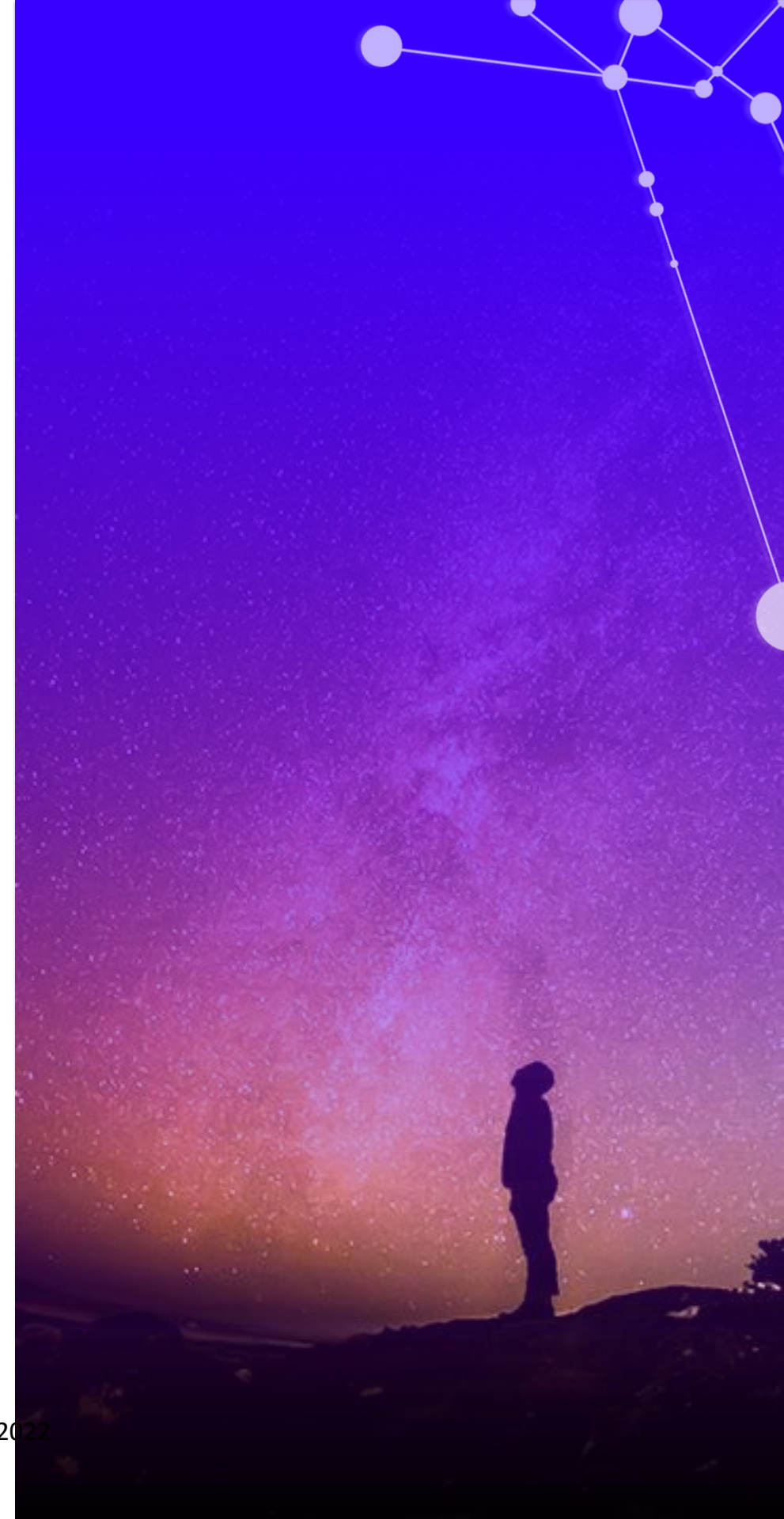
Collection: Push/Pull

"Metadata de-duplication" process, which allows the recording of views/downloads for the same item.

Anonymization of IP addresses.

Compliance with COUNTER Code of Practice.

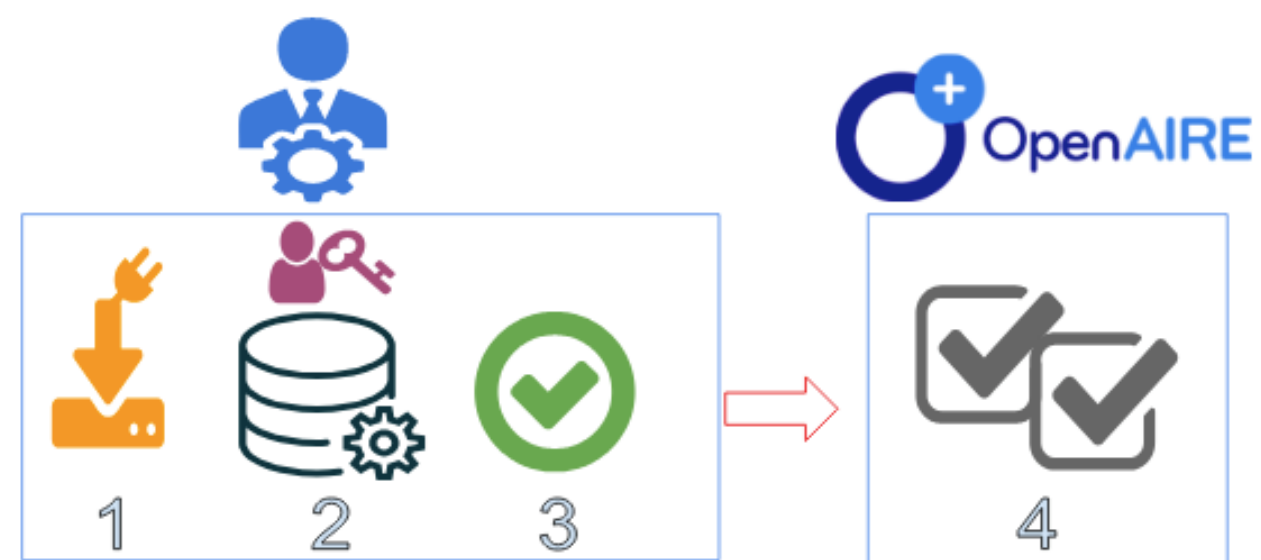
Statistical data with common standards to correlate/compare with other sources.



How to use Usage Counts

- Join in 4 steps

1. Download.
2. Configure.
3. Deploy.
4. Validate (by OpenAIRE).



- Or using 'SUSHI-lite endpoint' to collect COUNTER reports



Thank you!

Antonis Lempesis

antleb@athenarc.gr

