

Core Facility Computational Bioanalytics



- Services for Reproducible Data Analysis
- MedBioNode HPC Infrastructure

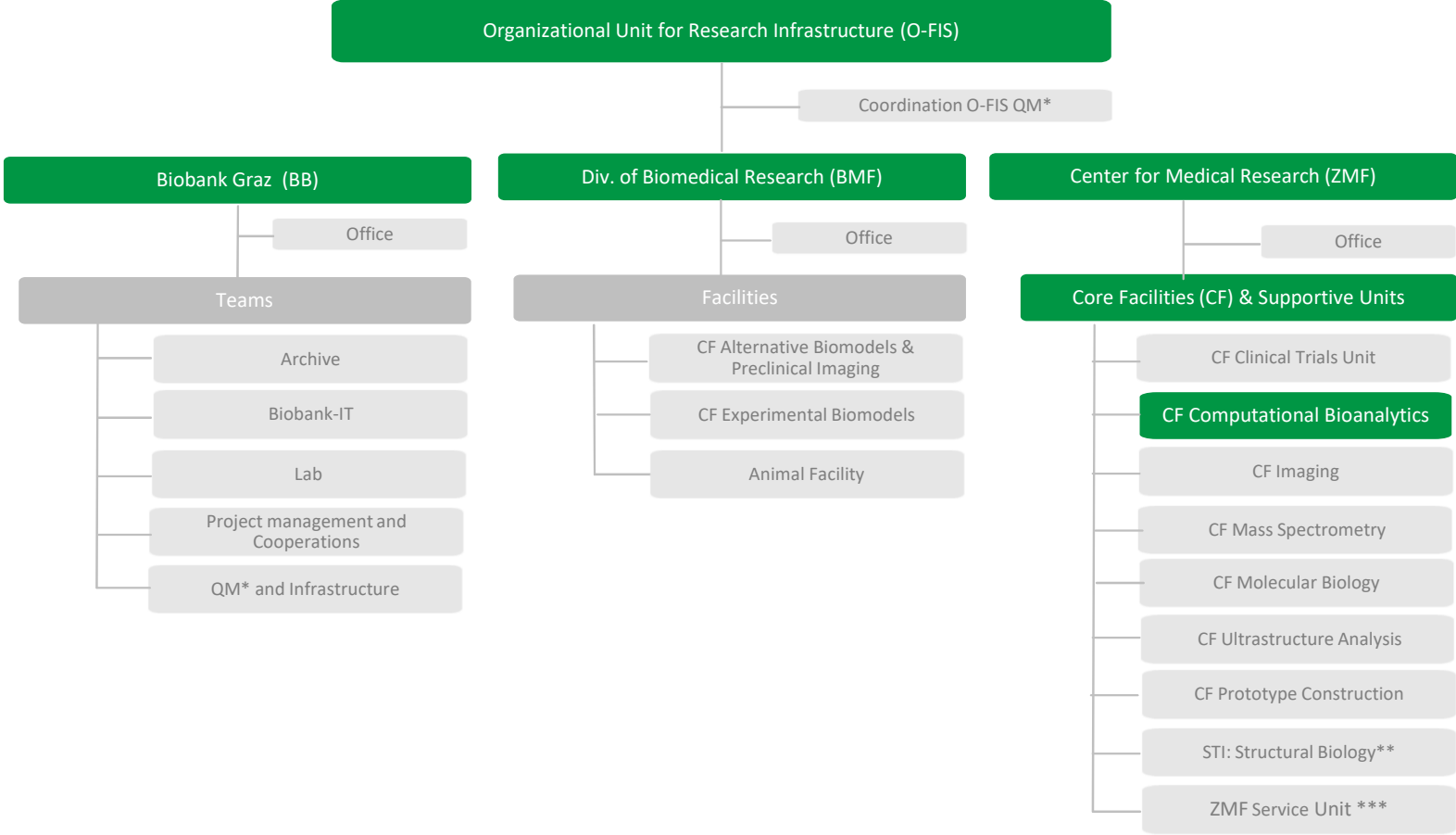


Andrea Groselj-Strele, MSc. PhD

Core Facility Computational Bioanalytics, Med Uni Graz

andrea.groselj-strele@medunigraz.at

Organigram O-FIS



*Quality Management **Science-Technology Interface: Structural Biology *** Management of lab equipment and research space located at ZMF I and ZMF II (incl. coordination of central radioisotope labs)

Core Facility Computational Bioanalytics (CF-CB) - Services



Consulting

- Definition of user needs
- Experimental design
- Sample size



Individual Training

- Learn to analyze your data



galaxy.medunigraz.at

- User support (> 300 user)
- Workflow development
- Galaxy administration



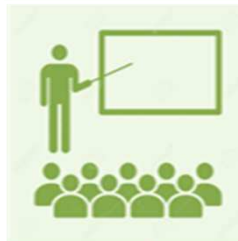
MedBioNode Cluster

- User support (> 130 user)
- Cluster administration
- R server



Data analysis

- Sample size / power analysis
- Data preprocessing & visualization
- High level downstream analysis

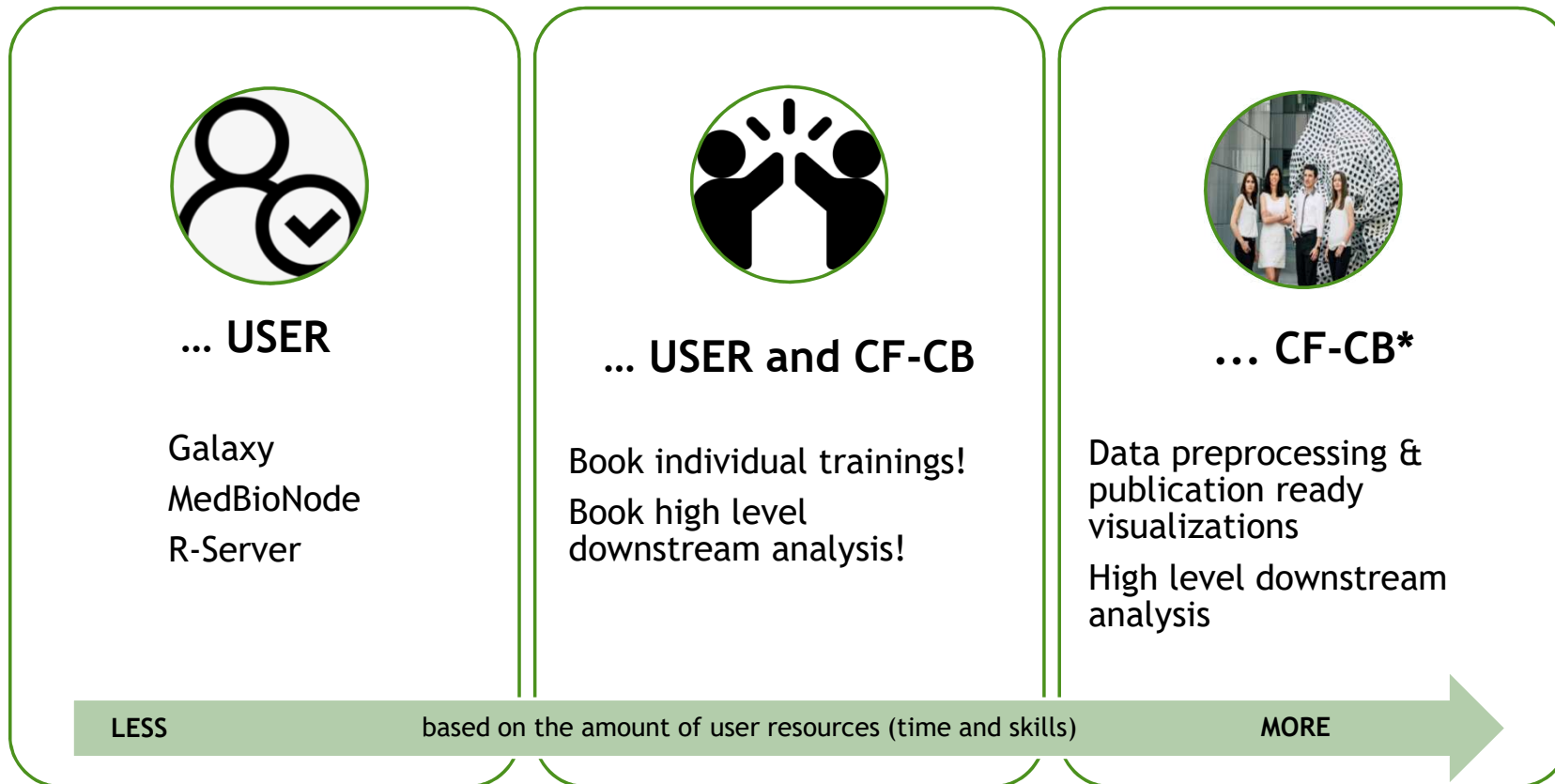


Medical Research Academy

- Linux and command line data analysis
- Working with MedBioNode Cluster
- Galaxy trainings

[Medical Research Academy | \(medunigraz.at\)](https://www.medunigraz.at)

Data Analysis is done by



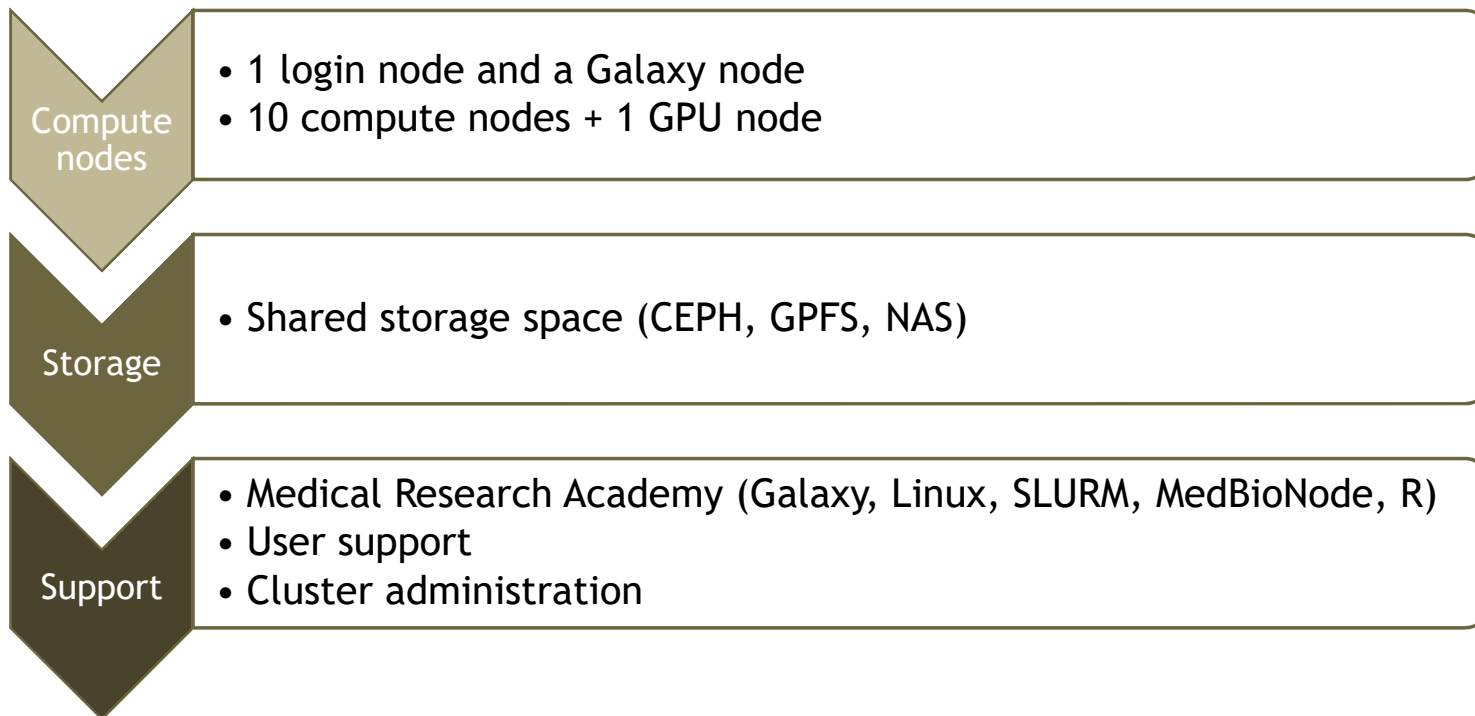
* User can book single services or packages

Collaboation Possibilities



1. Med Uni Graz CF-CB is primarily open to internal scientists
2. Members of BioTechMed-Graz (research alliance of the University of Graz, the Graz University of Technology, and the Medical University of Graz)
3. External Partners

CF-CB HPC-Infrastructure: MedBioNode



<https://forschungsinfrastruktur.bmbwf.gv.at/en>

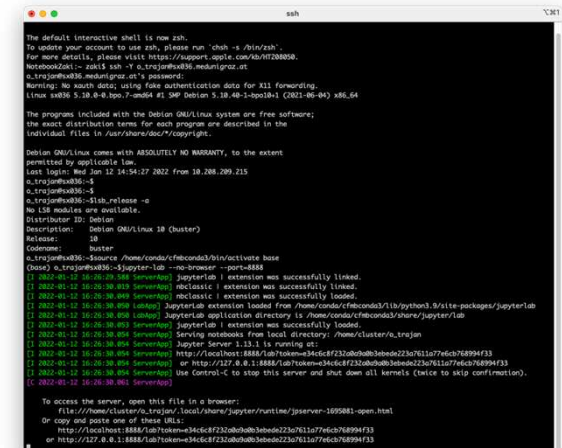
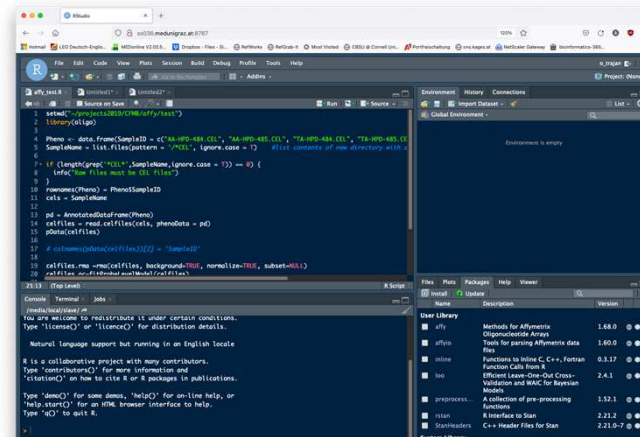
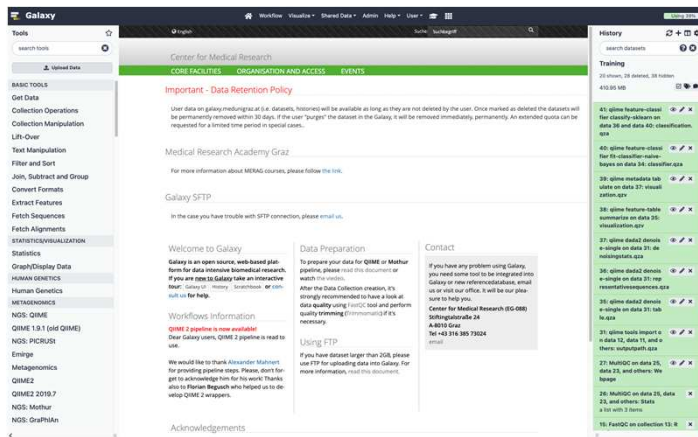
HPC MedBioNode - Modalities of access



Galaxy Server web-based platform
<https://galaxy.medunigraz.at/>

Open-source Rstudio Server
<http://sx036.medunigraz.at:8787>

CLI access
ssh sx036.medunigraz.at



Galaxy for FAIR data analysis at Med Uni Graz

1. Web-based, open-source platform
2. Easy to use - without programming experience
3. Standardized workflows
4. Manage data by sharing and publishing results, workflows and visualizations
5. Results are accessible and reproducible

Thank you!

Contact:

Andrea Groselj-Strele

andrea.groselj-strele@medunigraz.at