

# **Preservation of e-journals at the *Koninklijke Bibliotheek***

Hilde van Wijngaarden  
Digital Preservation Officer

*Koninklijke Bibliotheek/ National Library of the  
Netherlands*

*[www.kb.nl/e-depot](http://www.kb.nl/e-depot)*



**KB**

## **Overview**

- /// Deposit of electronic publications at the KB
- /// The e-Depot as a digital archive for international e-journals
- /// Current status of the e-Depot
- /// The e-Depot: how does it work?
- /// Access policy
- /// Plans for the future



## **Deposit of electronic publications at the KB**

- /// In the Netherlands, there is no formal deposit law
- /// Publications deposited voluntarily
- /// Agreements with publishers
- /// While building the e-Depot, the agreement with Elsevier was renewed
- /// New agreement: deposit of e-journals no longer restricted to Dutch imprint
  - /// Elsevier: wanted a 'safe place' for their digital publications
  - /// KB: place of imprint not relevant for digital publications
- /// Kluwer signed the same kind of agreement
- /// Next step: deposit by international publishers



## **The e-Depot as a digital archive for international e-journals**

- /// Agreements with individual publishers
- /// Publishers do not pay us, we do not pay them
  
- /// The KB promises to:
  - /// Do everything possible to keep the publications accessible
  - /// Maintain the integrity of the publications' content
  - /// Commit itself to the long-term storage and maintenance
  - /// Honor access policy as agreed upon with the publisher
  
- /// The publisher promises to:
  - /// Deliver their e-journals with metadata
  - /// Discuss preferred metadata and formats



## **Current status of the e-Depot**

- /// Agreements signed with Elsevier Science, Kluwer Academic, BioMed Central and Blackwell
- /// New agreements in negotiation
- /// Operational since March 2003
- /// With Elsevier e-pubs, it processes 40,000 articles per day
- /// Currently over 2 million articles stored
- /// Scalable up to 200 TB (and even more...)

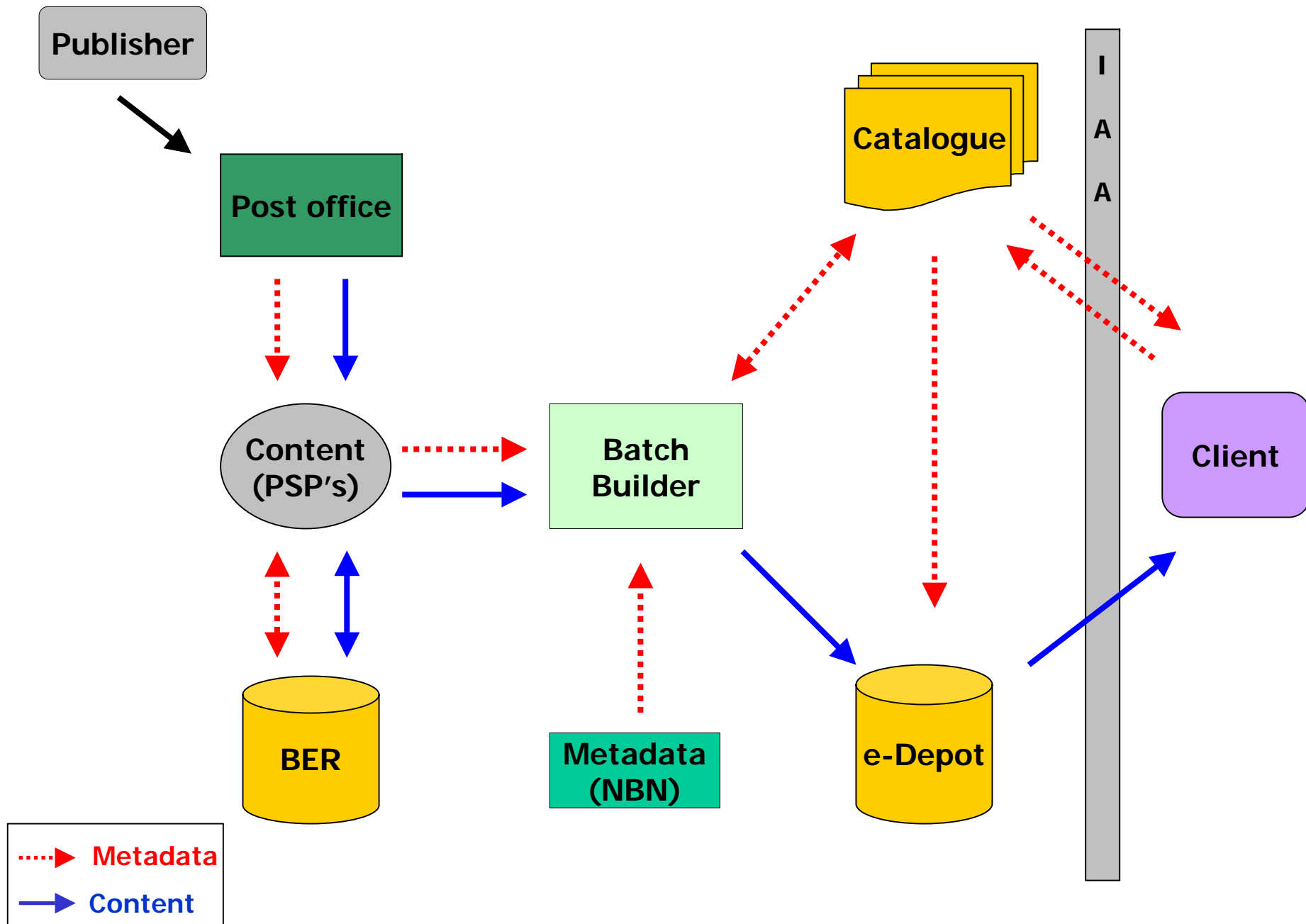


## **The e-Depot: How does it work?**

- /// On-line publications:
  - /// Delivery through FTP or tapes
  - /// Registration, CRC Check
  - /// Metadata conversion
  - /// Metadata stored in the central catalogue
  - /// Storage in **e-Depot**, together with technical metadata
  
- /// Off-line publications (installables):
  - /// Installation on Reference Workstation
  - /// Manual cataloguing
  - /// Installation of entire image in **e-Depot**



# Preservation of e-journals

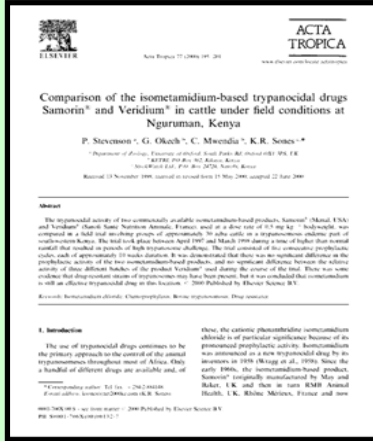
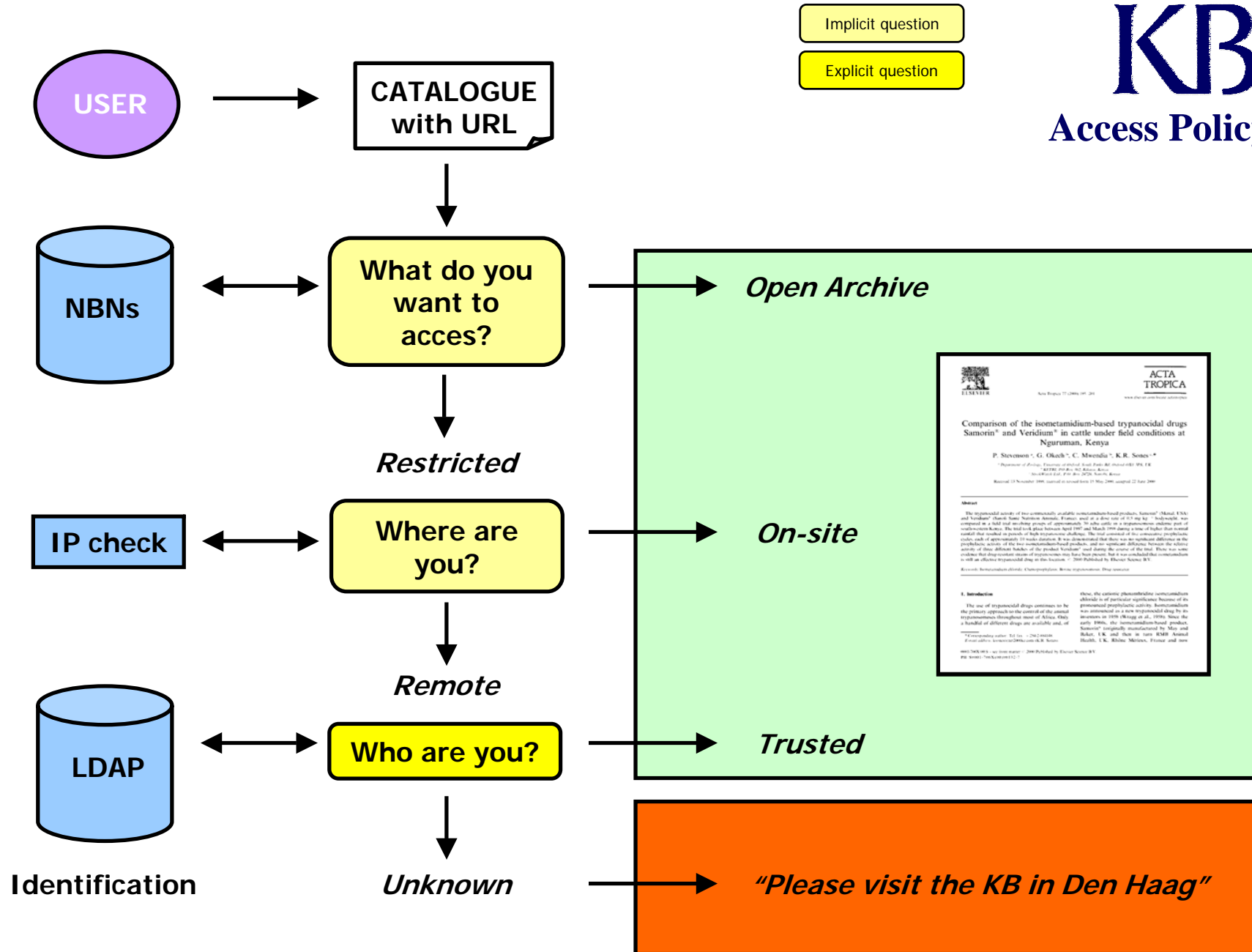


## **Access policy**

- /// Access discussed with publisher
- /// On-site access only for Elsevier and Kluwer journals
- /// Open access for BioMed Central
- /// Delivery for Inter Library Loan on paper (fax or print)
- /// Back-up facility in case of emergency







**Plans for the future (1):**

Technical:

- /// Generic procedure for loading (configurable post office)
- /// Integration with LTP modules
- /// Providing permanent access through R&D on strategies and tools
- /// Enhancing the system through co-operation with other DIAS-implementers



**Plans for the future (2):**

- /// More publishers, more content
  
- /// Other kinds of deposit: national projects
  - /// DARE: Digital Academic Depositories
  - /// Tiff-archive: Storing tiff masters for Dutch cultural heritage institutions
  
- /// Certification as a 'Trusted Depository'
  
- /// International co-operation: Safe place strategy



Any questions?

