

This discussion paper is/has been under review for the journal Atmospheric Chemistry and Physics (ACP). Please refer to the corresponding final paper in ACP if available.

Intercomparison of shortwave radiative transfer schemes in global aerosol modeling: results from the AeroCom Radiative Transfer Experiment

C. A. Randles^{1,2}, S. Kinne³, G. Myhre⁴, M. Schulz⁵, P. Stier⁶, J. Fischer⁷,
L. Doppler^{7,8}, E. Highwood⁹, C. Ryder⁹, B. Harris⁹, J. Huttunen¹⁰, Y. Ma¹¹,
R. T. Pinker¹¹, B. Mayer¹², D. Neubauer^{13,14}, R. Hitzenberger^{13,14},
L. Oreopoulos¹⁵, D. Lee^{15,16}, G. Pitari¹⁷, G. Di Genova^{17,18}, J. Quaas¹⁹, Fred
G. Rose^{20,21}, S. Kato²¹, S. T. Rumbold²², I. Vardavas²³, N. Hatzianastassiou²⁴,
C. Matsoukas²⁵, H. Yu^{26,15}, F. Zhang²⁶, H. Zhang²⁷, and P. Lu²⁷

¹GESTAR/Morgan State University, Baltimore, Maryland, USA

²NASA Goddard Space Flight Center (GSFC) Atmospheric Chemistry and Dynamics Lab, Greenbelt, MD, USA

³Max Plank Institute for Meteorology, Hamburg, Germany

⁴Center for International Climate and Environmental Research-Oslo (CICERO), Oslo, Norway

⁵Meteorologisk Institutt, Oslo, Norway

⁶Department of Physics, University of Oxford, Oxford, UK

Title Page

Abstract

Introduction

Conclusions

References

Tables

Figures

◀

▶

◀

▶

Back

Close

Full Screen / Esc

Printer-friendly Version

Interactive Discussion



**AeroCom Radiative
Transfer Experiment**

C. A. Randles et al.

[Title Page](#)[Abstract](#)[Introduction](#)[Conclusions](#)[References](#)[Tables](#)[Figures](#)[I◀](#)[▶I](#)[◀](#)[▶](#)[Back](#)[Close](#)[Full Screen / Esc](#)[Printer-friendly Version](#)[Interactive Discussion](#)

⁷Institut für Weltraumwissenschaften, Freie Universität, Berlin, Germany

⁸LATMOS-IPSL, Paris, France

⁹Department of Meteorology, University of Reading, Reading, UK

¹⁰Finnish Meteorological Institute, Kuopio, Finland

¹¹Department of Meteorology, University of Maryland College Park, Maryland, USA

¹²Ludwig-Maximilians-Universitaet, Munich, Germany

¹³Research Platform: ExoLife, University of Vienna, Vienna, Austria

¹⁴Faculty of Physics, University of Vienna, Vienna, Austria

¹⁵NASA GSFC Climate and Radiation Laboratory, Greenbelt, Maryland, USA

¹⁶Seoul National University, Seoul, Republic of Korea

¹⁷Department of Physical and Chemical Sciences, University of L'Aquila, L'Aquila, Italy

¹⁸Space Academy Foundation, Fucino Space Center, Ortucchio, Italy

¹⁹Institut für Meteorologie, Universität Leipzig, Leipzig, Germany

²⁰SSAI, Hampton, VA, USA

²¹NASA Langley Research Center (LaRC), Hampton, Virginia, USA

²²UK Met Office (UKMO) Hadley Center, Exeter, UK

²³Department of Physics, University of Crete, Crete, Greece

²⁴Laboratory of Meteorology, Department of Physics, University of Ioannina, Ioannina, Greece

²⁵Department of Environment, University of the Aegean, Aegean, Greece

²⁶Earth System Science Interdisciplinary Center (ESSIC), University of Maryland, College Park, Maryland, USA

²⁷Laboratory for Climate Studies, CMA, National Climate Center, Beijing, China

Received: 31 July 2012 – Accepted: 27 November 2012 – Published: 19 December 2012

Correspondence to: C. A. Randles (cynthia.a.randles@nasa.gov)

Published by Copernicus Publications on behalf of the European Geosciences Union.

Abstract

In this study we examine the performance of 31 global model radiative transfer schemes in cloud-free conditions with prescribed gaseous absorbers and no aerosols (Rayleigh atmosphere), with prescribed scattering-only aerosols, and with more absorbing aerosols. Results are compared to benchmark results from high-resolution, multi-angular line-by-line radiation models. For purely scattering aerosols, model bias relative to the line-by-line models in the top-of-the atmosphere aerosol radiative forcing ranges from roughly -10 to 20 %, with over- and underestimates of radiative cooling at higher and lower sun elevation, respectively. Inter-model diversity (relative standard deviation) increases from ~ 10 to 15 % as sun elevation increases. Inter-model diversity in atmospheric and surface forcing decreases with increased aerosol absorption, indicating that the treatment of multiple-scattering is more variable than aerosol absorption in the models considered. Aerosol radiative forcing results from multi-stream models are generally in better agreement with the line-by-line results than the simpler two-stream schemes. Considering radiative fluxes, model performance is generally the same or slightly better than results from previous radiation scheme intercomparisons. However, the inter-model diversity in aerosol radiative forcing remains large, primarily as a result of the treatment of multiple-scattering. Results indicate that global models that estimate aerosol radiative forcing with two-stream radiation schemes may be subject to persistent biases introduced by these schemes, particularly for regional aerosol forcing.

1 Introduction

In order to understand climate and climate change, it is essential to have an accurate understanding of the Earth's radiation budget and how this budget has changed over time. Atmospheric aerosols have a direct effect on the radiation budget through scattering and absorption of primarily solar radiation, and this radiative forcing can be

ACPD

12, 32631–32706, 2012

AeroCom Radiative Transfer Experiment

C. A. Randles et al.

Title Page

Abstract

Introduction

Conclusions

References

Tables

Figures

◀

▶

◀

▶

Back

Close

Full Screen / Esc

Printer-friendly Version

Interactive Discussion



AeroCom Radiative Transfer Experiment

C. A. Randles et al.

Title Page

Abstract

Introduction

Conclusions

References

Tables

Figures

◀

▶

◀

▶

Back

Close

Full Screen / Esc

Printer-friendly Version

Interactive Discussion



quantified as the net difference in flux at a given level with and without aerosol. Primarily scattering aerosols such as sulphate generally have a negative or cooling radiative effect at the top of the atmosphere (TOA). More absorbing aerosols such as black carbon can have a radiative cooling or warming effect on the climate system depending on the brightness of the surface or clouds beneath them (Chýlek and Coakley, 1974). Aerosols may also have indirect and semi-direct effects on climate, which are due to microphysical and thermodynamic interactions with clouds, respectively, that impact cloud radiative forcing.

There has been considerable progress in the global modeling of aerosols (e.g. Textor et al., 2006; Koch et al., 2009), however the uncertainty in estimates of direct aerosol radiative forcing, often measured by the diversity in global model estimates, remains high (Forster et al., 2007; Myhre et al., 2012). In cloud-free conditions, quantification of the direct aerosol radiative effect in atmospheric models depends on knowledge of aerosol optical properties (aerosol optical depth, single scattering albedo, asymmetry parameter, and their wavelength dependence) and wavelength dependent surface albedo. While uncertainties in estimates of aerosol radiative forcing are primarily due to uncertainties in the knowledge of these properties and how they are parameterized (e.g. Boucher et al., 1998), the treatment of radiative transfer in global models, including the accuracy of the method, its spectral resolution, and the treatment of molecular and multiple-scattering, also contribute to the multi-model diversity in estimates of direct aerosol radiative forcing (e.g. Halthore et al., 2005; Oreopoulos et al., 2012).

The aerosol model intercomparison initiative (AeroCom) was created in 2002 with the goal of providing a platform for detailed evaluations of aerosol simulations in global models (<http://aerocom.met.no/Welcome.html>), focusing in particular on the diversity in global estimates of anthropogenic aerosol direct radiative forcing. AeroCom Phase I explored the inter-model diversity in aerosol processes and properties that contribute to differences in the aerosol optical properties used to quantify radiative forcing (Textor et al., 2006, 2007). Despite the diversity in aerosol properties simulated by the AeroCom models, there was surprisingly good agreement in global, annual total aerosol optical

depth. However, this agreement did not extend to the sub-component level as there were large differences in the compositional mixture of the aerosol dry mass and water uptake, both of which influence aerosol absorption and radiative forcing (Kinne et al., 2006). After harmonizing emissions, the global, annual mean pre-industrial to present-day direct aerosol radiative forcing (RF) was found to be -0.22 W m^{-2} with a range of -0.41 to $+0.04 \text{ W m}^{-2}$ and standard deviation (SD) of $\pm 0.16 \text{ W m}^{-2}$ (or $\pm 73\%$ of the mean; Schulz et al., 2006). Considerable diversity in aerosol residence times, mass extinction coefficients, forcing per unit optical depth (forcing efficiency) and the ratio of all-sky to clear-sky forcing contributed to the diversity in RF with harmonized emissions (Schulz et al., 2006).

Prior to AeroCom Phase I, the large inter-model diversity in aerosol models was not recognized by the community at large; however, reasons for this diversity required more investigation. As a result of this and the increasing complexity of aerosol models and their coupling to transport and climate models, investigators have proposed numerous experiments for AeroCom Phase II (Schulz et al., 2009). Three additional Phase II experiments have been proposed to investigate the model diversity in aerosol radiative forcing. Myhre et al. (2012) examines the pre-industrial to present-day anthropogenic aerosol direct radiative forcing in 15 global aerosol models of various complexity. The remaining two studies aim to understand inter-model diversity by removing host model uncertainties that arise during the simulation of aerosol distributions and aerosol optical properties. In the AeroCom Prescribed Experiment (Stier et al., 2012), aerosol optical properties (aerosol optical depth, Ångström exponent, single scattering albedo, and asymmetry parameter) are prescribed to examine the inter-model diversity in non-aerosol related host-model process and assumptions that impact RF calculations (e.g. surface albedo and clouds). As a subset and simplification of the Prescribed Experiment, the offline AeroCom Radiative Transfer Experiment presented here examines the diversity in aerosol radiative forcing due to differences in global model radiation schemes.

AeroCom Radiative Transfer Experiment

C. A. Randles et al.

[Title Page](#)[Abstract](#)[Introduction](#)[Conclusions](#)[References](#)[Tables](#)[Figures](#)[◀](#)[▶](#)[◀](#)[▶](#)[Back](#)[Close](#)[Full Screen / Esc](#)[Printer-friendly Version](#)[Interactive Discussion](#)

**AeroCom Radiative
Transfer Experiment**

C. A. Randles et al.

[Title Page](#)[Abstract](#)[Introduction](#)[Conclusions](#)[References](#)[Tables](#)[Figures](#)[◀](#)[▶](#)[◀](#)[▶](#)[Back](#)[Close](#)[Full Screen / Esc](#)[Printer-friendly Version](#)[Interactive Discussion](#)

There have been numerous intercomparisons of shortwave radiation codes in the past. Fouquart et al. (1991) examined 26 radiation schemes ranging from high to low spectral resolution and found substantial discrepancies in computed fluxes for even the simplest prescription of only pure water vapor absorption. When including highly scattering aerosols and a fixed surface albedo, the relative standard deviation for the eleven models considered ranged from 23 to 114 % as the solar zenith angle (SZA) decreased from 75° to 30° (Fouquart et al., 1991). Boucher et al. (1998) found that the relatively high (8 %) standard deviation in zenith angle-average broadband forcing due to prescribed non-absorbing sulfate aerosols was due to differences in the treatment of Mie scattering, multiple scattering, phase functions, and spectral and angular model resolution. Even higher diversity was found for radiative forcing calculated at specific sun elevations. A more recent and extensive study by Halthore et al. (2005) found substantial differences in TOA RF with prescribed aerosol optical properties and surface albedo that increased with both sun elevation and aerosol optical depth.

In this study we adapt the protocol from Halthore et al. (2005), which itself was inspired by Fouquart et al. (1991). We first focus on inter-model differences in Rayleigh scattering in cloud- and aerosol-free conditions with prescribed standard atmospheres (i.e. prescribed ozone and water vapor distributions) and surface albedo. We also consider two simple cases with prescribed aerosol optical properties, including both scattering-only and absorbing aerosols separately, to examine inter-model differences in clear-sky (cloud-free) aerosol radiative forcing. Only solar wavelengths are examined in this study because AeroCom is primarily interested in anthropogenic aerosol radiative forcing rather than longwave aerosol effects that are strongly influenced by natural (e.g. dust) aerosol. We examine the clear-sky fluxes and aerosol radiative forcing as a function of sun elevation or solar zenith angle (SZA). Where possible and appropriate, we make comparisons to earlier intercomparison studies. It should be noted that the conditions specified in this study are not meant to reflect actual atmospheric conditions, which may vary considerably from those considered here. For climate studies, it is not the error in calculating radiative fluxes under a given set of conditions, but the

systematic error that occurs over large time and spatial scales, that is of primary importance (Arking, 2005). However, it is important to understand how forcing varies with sun elevation because zenith-angle averaged forcing assumes the uniform geographic distribution of aerosol optical properties, surface albedo, and clouds – conditions never achieved in the actual climate system (Boucher et al., 1998).

2 Protocol

Table 1 provides a brief description of the participating models, including their spectral resolution and multiple-scattering and gaseous transmission schemes. More detailed descriptions and references are given in Appendix A and Appendix Table A1. The data used in this study is made publicly available via the AeroCom server (aerocom-users.met.no). We have submissions from 31 radiation schemes. Two high-spectral resolution line-by-line (LBL) models (Models #1 and 2), where transmittance is treated explicitly, serve as benchmarks for comparison. Models # 1–3, 5–9, and 30–31 use multi-stream (i.e. >2-stream) approximations to the solution of the radiative transfer equation while the remaining models use the two-stream approximation. Multiple-scattering schemes include the discrete-ordinate method (DISORT; Stamnes et al., 1988, Models #1–7), variations of the Eddington approximation (e.g. Joseph et al., 1976, Models #8–29), and the matrix-operator method (MOM; Plass et al., 1973, Models #30–31). For the lower spectral resolution band-models, gaseous transmittance is generally achieved using either the correlated-*k* method (*ck*-D; e.g. Lacis and Oinas, 1991; Fu and Liou, 1992; Kato et al., 1999) or the exponential sum fit transmission scheme (ESFT; e.g. Wiscombe and Evans, 1977; Sun and Rikus, 1999). A number of these schemes are currently in use in global climate models, some are used for offline calculation of aerosol radiative forcing, and still others are used, for example, to perform detailed calculations of photolysis rates in coupled climate-chemistry models (see Appendix A).

AeroCom Radiative Transfer Experiment

C. A. Randles et al.

Title Page

Abstract

Introduction

Conclusions

References

Tables

Figures

◀

▶

◀

▶

Back

Close

Full Screen / Esc

Printer-friendly Version

Interactive Discussion



AeroCom Radiative Transfer Experiment

C. A. Randles et al.

Title Page

Abstract

Introduction

Conclusions

References

Tables

Figures

◀

▶

◀

▶

Back

Close

Full Screen / Esc

Printer-friendly Version

Interactive Discussion



Table 2 gives an overview of the experiment protocol and the cases considered. Fluxes were reported at two nominal wavelength bands: broadband (0.2–4.0 μm) and UV-visible (UV-VIS; 0.2–0.7 μm). However, due to the difficulty in configuring some models to these exact bands, we accepted variations in these wavelength ranges. To facilitate intercomparison, we normalized all flux components by the model-specific downwards irradiance at the top-of-the-atmosphere (TOA) in the appropriate band (broadband or UV-VIS) and then scaled these normalized fluxes by the inter-model median TOA downwards irradiance (such that all flux quantities examined are in W m^{-2} ; see Fig. 2). We requested the following flux fields: total (direct + diffuse) down at the surface broadband, diffuse flux down at the surface broadband, total diffuse up at TOA broadband, and total down at surface UV-visible. These flux (F) quantities allow us to calculate TOA aerosol radiative forcing (RF) and absorptance (A) in the broadband. Absorptance is calculated as in Halthore et al. (2005) and represents the fraction of TOA irradiance absorbed in the atmosphere:

$$A = \frac{(F_{\text{TOA}}^{\downarrow} - F_{\text{TOA}}^{\uparrow}) - (F_{\text{SFC}}^{\downarrow} - F_{\text{SFC}}^{\uparrow})}{F_{\text{TOA}}^{\downarrow}} \quad (1)$$

where arrows indicate the direction of the flux (positive down). Additionally, the surface albedo (α) is fixed to the same value for all wavelengths, allowing for the calculation of surface (SFC) aerosol RF ($F_{\text{SFC}}^{\uparrow} = \alpha F_{\text{SFC}}^{\downarrow}$). Flux in the near-IR is computed as the difference between broadband and UV-VIS.

2.1 Case 1: Rayleigh scattering atmosphere

Only molecular scattering and absorption (Rayleigh atmosphere) occur in the aerosol and cloud-free Case 1. Following Halthore et al. (2005), shortwave flux components were computed using two different standard atmospheric profiles for ozone (O_3) and water vapor (H_2O): the Air Force Geophysics Laboratory (AFGL; Anderson et al., 1986)

subarctic winter (SAW, lower humidity) and tropical atmospheres (TROP, higher humidity). Figure 1 shows the prescribed O_3 and H_2O profiles. Modelers were given the standard atmospheres at 1-km resolution from 0–120 km and corresponding pressure levels; it was up to the individual contributor to vertically interpolate these fields as needed. Fluxes are analyzed at two solar zenith angles (SZA), ranging from low (30°) to high (75°), to provide a range of conditions that represent high and low sun elevation, respectively. The wavelength-independent Lambertian surface albedo (α) was prescribed as 0.2. This case only considers cloud- and aerosol-free conditions; it thus highlights the transmittance of the radiation schemes considered. Results from Case 1 are presented in Sect. 3.1.

2.2 Case 2a and 2b: cloud-free atmosphere with aerosols

Case 2a (Scattering Aerosols) augments Case 1 by considering a simple prescription of purely scattering aerosols. AOD at 550 nm is prescribed at 0.2 and linearly distributed in the lowest 2 km of the host model. This corresponds roughly to the “high AOD” case considered by Halthore et al. (2005) The Ångström exponent is given as 1.0 at 550 nm such that at other wavelengths ($\lambda; \mu\text{m}$), $AOD = \exp(-1.0 \times \ln(\lambda/0.55) + \ln(0.2))$. The single scattering albedo (SSA) is solar-spectrally invariant and set equal to 1.0 for scattering aerosols. The asymmetry parameter (g) is prescribed at 0.7 (forward-scattering) and is also solar-spectrally invariant. In Case 2b (Absorbing Aerosols), we consider a simple prescription of more absorbing aerosols. Aerosol properties are as in Case 2a, however the single scattering albedo is prescribed at 0.8 (solar-spectrally invariant SSA). Note that in Case 2b the aerosols *both* scatter and absorb solar radiation. These cloud-free aerosol cases shows how the models handle multiple scattering and atmospheric absorption by aerosols. Flux results from Case 2a and 2b are presented in Sect. 3.2.

AeroCom Radiative Transfer Experiment

C. A. Randles et al.

[Title Page](#)[Abstract](#)[Introduction](#)[Conclusions](#)[References](#)[Tables](#)[Figures](#)[I◀](#)[▶I](#)[◀](#)[▶](#)[Back](#)[Close](#)[Full Screen / Esc](#)[Printer-friendly Version](#)[Interactive Discussion](#)

2.3 Case 2a and 2b: aerosol forcing

The fluxes considered in Cases 1 and 2 provide the necessary information to calculate broadband aerosol radiative forcing (RF). RF [W m^{-2}] is defined as the difference (down \downarrow – up \uparrow) in flux (F) with and without aerosols present in the atmosphere:

$$5 \quad \text{RF} = (F^\downarrow - F^\uparrow)_{\text{Case}_2} - (F^\downarrow - F^\uparrow)_{\text{Case}_1} \quad (2)$$

Defined in this way (positive down), negative values imply aerosol radiative cooling and positive values imply aerosol radiative warming of the climate system. We compute RF at the top-of-the-atmosphere (TOA) and the surface (SFC). The atmospheric forcing (ATM) is the difference between the two: $\text{ATM} = \text{TOA} - \text{SFC}$. Because aerosol RF is calculated as a difference in fluxes with and without aerosols holding atmospheric state constant, errors in the treatment of the Rayleigh atmosphere (Case 1) tend to be cancelled to first order. However, we examine aerosol RF because it is of primary interest to the AeroCom community and remains a major source of uncertainty in our understanding of anthropogenic climate change (Solomon et al., 2007). Because we consider harmonized surface and aerosol optical properties, these RF calculations should indicate differences in how models treat multiple-scattering, rather than how an individual model simulates aerosol properties (mass, lifetime, etc) and their resulting direct RF. Note that global, diurnally-averaged results from the AeroCom Prescribed Experiment FIX2–FIX0 in clear-sky (cloud-free) conditions are comparable to Case 2a. However, in the Prescribed Experiment the surface albedo and gaseous absorbers are not fixed (Stier et al., 2012). Similarly, results from Case 2b are analogous to the global average FIX3–FIX0 clear-sky results in Stier et al. (2012). We examine aerosol RF in Sect. 3.3 and draw comparisons to other Phase II AeroCom studies in Sect. 3.4.

Title Page

Abstract

Introduction

Conclusions

References

Tables

Figures

◀

▶

◀

▶

Back

Close

Full Screen / Esc

Printer-friendly Version

Interactive Discussion



3 Results

Recall that results from each case are first normalized to the model-specific TOA downwards flux in the appropriate band (broadband or UV-VIS); the normalized fluxes are then scaled by the multi-model median TOA flux (see Fig. 2). We tabulate results separately for the line-by-line (LBL) benchmark codes (Models #1 and 2) and the remaining non-LBL models. We calculate the relative standard deviation (RSD) in order to evaluate overall model diversity, where $RSD = \frac{\sigma}{\mu}$, σ is the standard deviation, and μ the mean value of the respective parameter. The RSD is calculated separately for the two LBL models and the non-LBL models. The average bias of the non-LBL models relative to the average benchmark LBL results is expressed as a percent difference from the LBL-mean (i.e. $100 \times (\mu_{\text{models}} - \mu_{\text{LBL}}) / \mu_{\text{LBL}}$). To visualize non-LBL model diversity, we examine the individual model bias relative to the non-LBL model mean.

3.1 Case 1 (Rayleigh atmosphere)

Figure 2a shows the direct downwards broadband flux in cloud- and aerosol-free conditions for each solar zenith angle and standard atmosphere combination. While most models fall within the inter-model diversity (the greater of ± 1 standard deviation from the LBL or non-LBL model mean; shading), models 14, 25, 27, 30, and 31 are often outliers and are not included in the summary statistics for the Rayleigh atmosphere case in Table 3. (Appendix Table A2 provides statistics including all models). Of these models, models 14 and 30 use the same gaseous transmission scheme (Appendix A). Note that models 22 and 23 are identical to models 20 and 21 for the Rayleigh atmosphere case and are thus omitted for Case 1; however they are included in Case 2 because they use different multiple-scattering schemes (Table 1).

The low value of RSD for both LBL and non-LBL models (Table 3) indicates the best agreement in direct broadband flux down at the surface when the water vapor slant path is at its lowest (30° in the sub-Arctic winter). Inter-model differences increase both with increased solar zenith angle (decreased sun elevation) and increased water vapor

Title Page

Abstract

Introduction

Conclusions

References

Tables

Figures

◀

▶

◀

▶

Back

Close

Full Screen / Esc

Printer-friendly Version

Interactive Discussion



(i.e. the tropical AFGL profile), with the former having a stronger impact on the RSD. This pattern of inter-model difference agrees with the findings of Halthore et al. (2005), and the agreement between models in this study is also generally better than 2%. Our model diversity is within ~30% of the broadband direct flux results for the 16 models considered in Halthore et al. (2005).

Relative to the LBL models, models in this study tend to overestimate the direct broadband radiation at the surface by <2% under most conditions (Table 3). We note that in addition to prescribing the AFGL ozone and water vapor profiles, Halthore et al. (2005) also specified N₂ and O₂ abundances as a function of height from MODTRAN and fixed the CO₂ mixing ratio at 360 ppm. In our results, individual modelers choose the specification of trace gasses excluding O₃ and H₂O. A sensitivity study to the inclusion of additional gaseous absorbers was performed using the CAR ensemble modeling system (Liang and Zhang, 2012; Zhang et al., 2013), which provided results for seven of the radiation schemes considered here (Table 1). Addition of N₂O, CH₄, and CO₂ contributed to an additional 1% decrease in broadband downwards flux at the surface, with most of that due to carbon dioxide (F. Zhang, personal communication, 2012). We thus note that diversity in the treatment of other trace gas absorbers may contribute to some of the bias and diversity in our results.

Figure 2b shows the total (direct plus diffuse) downwards flux in the near-IR (i.e. broadband minus UV-VIS). Deficiencies in the near-IR band indicate that models may not adequately treat absorption by water vapor. The statistics in Table 3 indicate increased model diversity (larger RSD) and increased bias relative to the LBL results as the slant-path of water vapor increases, with the maximum RSD and bias at 75° in the tropics. Broadband absorptance calculated according to Eq. (1) is shown in Fig. 2c. Model diversity expressed as RSD is roughly 4% for broadband absorptance. In the tropical atmosphere, broadband absorptance RSD is slightly higher compared to the ~3% diversity found in Halthore et al. (2005). This difference, however, is small considering that the spectral resolution of the models considered in Halthore et al. (2005) was generally much greater than the models in this study.

AeroCom Radiative Transfer Experiment

C. A. Randles et al.

Title Page

Abstract

Introduction

Conclusions

References

Tables

Figures

◀

▶

◀

▶

Back

Close

Full Screen / Esc

Printer-friendly Version

Interactive Discussion



**AeroCom Radiative
Transfer Experiment**

C. A. Randles et al.

[Title Page](#)[Abstract](#)[Introduction](#)[Conclusions](#)[References](#)[Tables](#)[Figures](#)[I◀](#)[▶I](#)[◀](#)[▶](#)[Back](#)[Close](#)[Full Screen / Esc](#)[Printer-friendly Version](#)[Interactive Discussion](#)

In the UV-VIS where gaseous absorption is influenced by the amount of ozone, the LBL models show good agreement (RSD $\lesssim 1\%$; Table 3). However, the non-LBL RSD is higher by about a factor of ~ 2 for SAW (less O_3) and a factor of 5–8 for TROP (more O_3). The bias relative to the LBL calculations is low at the high sun elevation (30°) and increases at lower sun elevation (75°). Fig. A1a shows the UV-VIS down at the surface expressed as a percent deviation from the non-LBL model mean (i.e. μ excluding only models 1–2 and 22–23). Models that performed well for the broadband may have deficiencies in the UV-VIS range, as exhibited by models such as 5 and 25, which over and under-estimate the UV-VIS flux relative to the LBL results (see Fig. A2). Note that Model #5 uses a one-parameter scaling approach to scale the absorption by atmospheric gases to different temperatures and pressures; this reduces the O_3 absorption in the Rayleigh atmosphere case but is less important when calculating aerosol direct and indirect forcing as well as exoplanetary surface temperatures, the primary applications of this model.

The largest inter-model flux differences occur for broadband diffuse flux to the surface (Table 3, Fig. A1b, and Fig. A3). The RSD is roughly equal for each SZA regardless of prescribed atmosphere, and it is greatest at 30° . Relative to LBL calculations, models generally under- and overestimate broadband diffuse flux at the surface at lower and higher solar zenith angle, respectively. Because much of the diffuse flux occurs in the UV-VIS, deficiencies in the broadband diffuse flux may point to issues in the treatment of ozone absorption. The model diversity for the diffuse flux down at the surface is comparable to Halthore et al. (2005) in the sub-Arctic winter; however, it is considerably (~ 5 times) less in the tropical atmosphere. The relatively good agreement in upwards broadband flux at the top-of-the atmosphere (RSD $\sim 2\%$) is similar to the agreement found for the direct broadband flux to the surface as expected due to the prescribed surface albedo.

3.2 Case 2 (fluxes with aerosols)

Flux results for Case 2a (Scattering Aerosols) and Case 2b (Absorbing Aerosols) are summarized in Appendix Tables A3 and A4, respectively. For all flux quantities, model disagreement (RSD) increases with solar zenith angle and, with the exception of downwards UV-VIS flux, is higher in the tropical atmosphere compared to the sub-Arctic winter. In both aerosol cases, models agree within 2–3 % for all total (direct plus diffuse) flux quantities. For comparison, Halthore et al. (2005) found that model diversity with inclusion of non-absorbing aerosols at high AOT (0.24) as generally within 1–2 %. Model diversity is similar with increased aerosol absorption (decreased SSA), but the magnitude of the bias relative to the LBL-benchmark is generally slightly higher for absorbing aerosols. Compared to the clear-sky case (Case 1; Table 3), both the magnitude of the bias relative to the LBL-benchmark and model diversity increases with the inclusion of aerosols.

The worst model agreement for Case 2 occurs for the components of the total irradiance down at the surface, a finding in accord with Phase I of the Continual Inter-comparison of Radiation Codes (CIRC; Oreopoulos et al., 2012). Figures 3 and A4 illustrate the inter-model differences in the diffuse and direct components of the downwards broadband flux. The models tend to fall into two separate groups: those which are approximately equal to the LBL-benchmark (Group 1, Models #3–14, 14–21, 30–31), and those that underestimate it (Group 2; Models # 15–18, 22–29). Table 4 gives the statistics for each group relative to the LBL-mean. Despite the different biases in the two groups relative to the LBL-benchmark, the RSD shows that the model diversity is similar for each group (~3–6 %). Most multi-stream models (#3, 5–9), which include all models that employ the DISORT algorithm for multiple-scattering (#3–7), agree the best with the LBL-benchmarks (see the Appendix Fig. A5 and A6). Both LBL schemes also use DISORT and multiple streams (Table 1).

A sensitivity study using both a delta 2-stream and delta 4-stream approximation was performed using Model #9 (CAR-FLG; F. Zhang, personal communication, 2012).

AeroCom Radiative Transfer Experiment

C. A. Randles et al.

Title Page

Abstract

Introduction

Conclusions

References

Tables

Figures

◀

▶

◀

▶

Back

Close

Full Screen / Esc

Printer-friendly Version

Interactive Discussion



AeroCom Radiative Transfer Experiment

C. A. Randles et al.

Title Page

Abstract

Introduction

Conclusions

References

Tables

Figures

◀

▶

◀

▶

Back

Close

Full Screen / Esc

Printer-friendly Version

Interactive Discussion



While Model #9 is in Group 1 (Table 4) when run with a delta 4-stream method, using only a delta 2-stream method largely reduces the broadband diffuse flux to the surface such that it is closer to the mean flux for Group 2. In the delta-rescaling, the fraction of scattered energy residing in the forward peak (f) for the delta 2-stream and delta 4-stream approximations are $f = \tilde{\omega}_2/5$ and $f = \tilde{\omega}_4/9$, respectively, where $\tilde{\omega}_2$ and $\tilde{\omega}_4$ are the second and fourth coefficients of the phase function. Using the Henyey-Greenstein phase function, $\tilde{\omega}_2 = 5g^2$ and $\tilde{\omega}_4 = 9g^4$ where g is the asymmetry factor. When f decreases, more scattered energy is kept and there is an increase in diffuse flux at the surface. As the number of streams increase from two ($f \sim g^2$) to four ($f \sim g^4$), f decreases, increasing the diffuse flux down to the surface.

Models #20–23, which employ the Practical Improved Flux Method (PIFM) for multiple scattering (Zdunkowski et al., 1980), illustrate that the same 2-stream multiple-scattering method can be configured to either more accurately represent diffuse or total fluxes. In models #22 and 23, δ -rescaling provides more accurate total flux measurements at the expense of the partitioning between the direct and diffuse fluxes because it increases the flux in the direct beam to account for strong forward aerosol scattering. However, while omitting δ -rescaling (models #20 and 21) improves the accuracy of the diffuse beam relative to the LBL-results (Figs. A5 and A6), as shown in Sect. 3.3, it impacts RF estimates.

3.3 Aerosol Forcing from Case 2a and 2b

Figure 4 shows the top of the atmosphere aerosol radiative forcing, and surface and atmospheric aerosol radiative forcing are shown in Fig. 5. Table 5 gives the multi-model statistics for the aerosol radiative forcing. Note that Models #20–21 are outliers (see Fig. 4). Recall from Section 3.2 that these models are the same as Models #22–23 except that they do not include δ -rescaling (and thus sacrifice accuracy in total flux to gain accuracy in diffuse flux). Models #20–21 significantly over- and underestimate both the LBL-mean and the mean of all other models at 30° and 75° , respectively; we thus exclude them from the RF statistics in Table 5. Models using multiple streams (#3, 5–9,

30–31) generally show the best agreement with benchmark LBL calculations of TOA radiative forcing. If we exclude multi-stream models from the statistics in Table 5, the model bias gets larger but there is an improvement in model diversity (i.e. a reduction in RSD).

5 For scattering-only aerosols (Case 2a), the magnitude of aerosol cooling increases with solar zenith angle (Table 5). This is expected for an optically thin atmosphere; as the solar zenith angle increases so does the upscatter fraction, and decreases in incident irradiance are compensated by increased optical path length (Nemensure et al., 1995; Halthore et al., 2005). Compared to benchmark LBL calculations (Table 5),
10 models tend to overestimate top of the atmosphere radiative cooling at high sun elevation (low SZA) and underestimate radiative cooling at low sun elevation (high SZA). The magnitude of this bias is less sensitive to the prescribed atmosphere than to sun elevation, and is on the order of 20 % at 30 degrees and 10 % at 75 degrees. Model diversity is largest at the higher sun elevation ($\sim 15\%$ RSD at 30° compared to $\sim 9\%$ at 75°). As expected for non-absorbing aerosols, the behavior of the surface radiative forcing in terms of bias and RSD is similar to the results at the TOA.

For more absorbing aerosols (Case 2a, SSA = 0.8), TOA aerosol radiative forcing switches sign from positive to negative (radiative warming to cooling) as sun elevation decreases (or, as solar zenith angle increases). Models underestimate TOA radiative
20 warming by $\sim 12\text{--}14\%$ at 30° and underestimate radiative cooling at 75° by about 12–15 % relative to the LBL benchmark. Model biases are slightly larger in magnitude for the sub-Arctic winter (lower humidity) compared to the tropics (higher humidity). Model diversity (RSD) is roughly 12–15 % for all conditions considered. Surface radiative forcing for absorbing aerosols shows the least bias compared to the LBL-benchmark as well as the lowest model-diversity.

25 Figure 6 shows bi-variate probability density functions (PDFs) of TOA aerosol radiative forcing for Case 2a (a–d) and Case 2b (e–h). As a function of sun elevation for either the SAW (Fig. 6a and e) or TROP (Fig. 6b and f) atmospheric profile, the PDF indicates two main groups. Group M1 includes the LBL-models and most of the

AeroCom Radiative Transfer Experiment

C. A. Randles et al.

[Title Page](#)[Abstract](#)[Introduction](#)[Conclusions](#)[References](#)[Tables](#)[Figures](#)[◀](#)[▶](#)[◀](#)[▶](#)[Back](#)[Close](#)[Full Screen / Esc](#)[Printer-friendly Version](#)[Interactive Discussion](#)

AeroCom Radiative Transfer Experiment

C. A. Randles et al.

[Title Page](#)[Abstract](#)[Introduction](#)[Conclusions](#)[References](#)[Tables](#)[Figures](#)[◀](#)[▶](#)[◀](#)[▶](#)[Back](#)[Close](#)[Full Screen / Esc](#)[Printer-friendly Version](#)[Interactive Discussion](#)

multi-stream models (#3, 5–9) and group M2 includes the majority of the other models. The near-linear shape of the TOA RF PDFs as a function of atmosphere for SZA 30° (Fig. 6c and g) and SZA 75° (Fig. 6d and h) indicate that the inter-model diversity in TOA RF has a stronger dependence on sun elevation than on trace-gas absorption, as expected. For absorbing aerosols (Case 2b), inter-model diversity decreases, and this results in less spread in the TOA RF PDF as a function of solar zenith angle for a given atmosphere (Fig. 6e–f). In Fig. 6i–l we show bi-variate PDFs of TOA aerosol RF for each atmosphere-SZA combination for Case 2a (Scattering Aerosols) relative to Case 2b (Absorbing Aerosols). The PDFs are generally fairly linear but appear somewhat bi-modal, with the different modes corresponding to groups M1 and M2. Models 20–21 form a separate mode.

In Fig. 7 we show PDFs of the TOA, SFC, and ATM radiative forcing relative bias compared to the LBL-mean benchmark for all conditions. We see a strong dependence of model bias on solar zenith angle, which is somewhat stronger for non-absorbing aerosols. Compared to scattering aerosols, absorbing aerosols reduce model biases, particularly for SFC and ATM forcing at higher sun elevation. Note that the large biases for atmospheric forcing due to scattering aerosols are a consequence of the small value of this quantity ($<1 \text{ W m}^{-2}$).

3.4 Comparison to other AeroCom Phase II Experiments

As noted in the introduction, two other Phase II AeroCom experiments examine the diversity in aerosol radiative forcing estimates in global models. Myhre et al. (2012) reports the direct aerosol RF for 15 global aerosol models, 7 of which use radiation schemes similar or identical to radiative transfer schemes used in this work. Results from Myhre et al. (2012), reported as clear-sky (cloud-free) TOA and ATM normalized radiative forcing efficiency (NRF), can be compared to the results from this study. Note that the results from Myhre et al. (2012) (a) are global averages (diurnal and zenith-angle averaged) and (b) have varying host-model treatment of, for example, surface albedo and atmospheric gases. The NRF is defined as TOA and SFC radiative forcing

divided by AOD or the ATM radiative forcing divided by absorption optical depth (AAOD = $(1 - SSA) \times AOD$). Clear-sky global average results from the AeroCom Prescribed Experiment (Stier et al., 2012), which included 6 models using similar or identical radiation schemes to those included in this study, are even more comparable to results reported here. Specifications for aerosol properties in FIX2–FIX0 and FIX3–FIX0 are identical to Case 2a (Scattering Aerosols) and Case 2b (Absorbing Aerosols), respectively. However, in Stier et al. (2012) surface albedo and Rayleigh scattering are different for each model, and results are for global average conditions (diurnal, solar-zenith angle averaged). Note that in both this study and in Stier et al. (2012) AOD is 0.2 and AAOD is 0.04; these optical properties varied by model in Myhre et al. (2012).

Figure 8 summarizes overlapping aerosol radiative forcing results from the AeroCom Phase II experiments. Models that use similar radiation schemes have the same colored bar, and the benchmark average LBL radiative forcing (black bars with ± 1 standard deviation error bars) is given for this study.

Figure 8a–c summarizes the TOA, ATM, and SFC NRF for Case 2a (Scattering Aerosols) and its analog (FIX2–FIX0) from the Prescribed Experiment. The mean (RSD) of the six models from the Prescribed Experiment (FIX2–FIX0) are -36.6 W m^{-2} (11.3%), 4.9 W m^{-2} (84.0%), and -37.6 W m^{-2} (12.9%) for TOA, ATM, and SFC NRF, respectively. For these same radiation schemes in the current study, the mean TOA NRF ranges from ~ -45 to -84 W m^{-2} , increasing in magnitude with decreased sun elevation. The RSD ranges from ~ 10 to 17%, increasing with increased sun elevation. As solar zenith angle increases (sun elevation decreases), surface NRF roughly doubles in magnitude, and the RSD ranges are roughly the same as the TOA NRF.

For both studies, the RSD in atmospheric normalized radiative forcing is largest. The mean ATM NRF is slightly positive (more positive at lower SZA). Though aerosol absorption defined as zero for the simulations considered here ($SSA = 1.0$), aerosol scattering can enhance molecular absorption by increasing the photon path-length (Stier et al., 2012). In both this study and the Prescribed Experiment, Oslo-DISORT (Model #3, OsloCTM2 in Stier et al., 2012) exhibits the strongest absorption enhancement

AeroCom Radiative Transfer Experiment

C. A. Randles et al.

Title Page

Abstract

Introduction

Conclusions

References

Tables

Figures

◀

▶

◀

▶

Back

Close

Full Screen / Esc

Printer-friendly Version

Interactive Discussion



in the scattering-only aerosol case. However, in the two-stream version of this model (Oslo-2stream, Model #4; see Fig. 5) the ATM NRF is reduced by roughly 30 to 110 % at higher and lower sun elevation, respectively. The only other multi-stream model in Figure 8 (GSFC-FL; Model #8) exhibits the second largest absorption enhancement.

We also note that Oslo-DISORT has a low spectral resolution (4 shortwave bands, Table 1), and enhanced molecular absorption due to O₃ may be larger as a result (Stier et al., 2012).

The mean (RSD) of the six models from the Prescribed Experiment (FIX3–FIX0) are -9.3 W m^{-2} (43.6 %), 395.3 W m^{-2} (7.9 %), and -88.3 W m^{-2} (9.1 %) for TOA, ATM, and SFC NRF, respectively. For Case 2b (Absorbing Aerosols; Fig. 8 d–f), the TOA NRF RSD for the six radiation schemes also used in the Prescribed Experiment is 12 to 14 %, increasing slightly with increased sun elevation. The mean TOA NRF is approximately 50 W m^{-2} at 30° and -28 W m^{-2} at 75°. In Stier et al. (2012), models can have different surface albedos, and differences in the resulting path-length can contribute to the diversity in atmospheric absorption at the TOA. In this study, atmospheric NRF averages 658 W m^{-2} at 75° and 1233 W m^{-2} at 30°. The RSD for ATM NRF (8 and 5 % at each of these solar zenith angles) is lower compared to both the TOA NRF and the ATM NRF for the scattering-only case, consistent with the results of Stier et al. (2012). The RSD for SFC NRF is roughly equivalent to the atmospheric values.

We now consider radiation schemes that were also involved in the AeroCom Direct Radiative Forcing Experiment (Myhre et al., 2012). While it is generally difficult to scale the uncertainties in aerosol radiative forcing under idealized conditions to uncertainties in diurnal-averaged global estimates of aerosol radiative effects, this comparison allows us to examine how these radiation schemes perform at given sun elevations and atmospheric conditions that may be representative of daily averaged forcing for a given region. Considering schemes also used in Myhre et al. (2012), the TOA normalized forcing diversity (RSD) is roughly 13 % for Case 2b (Absorbing Aerosols) and the mean TOA NRF is ~ 48 and -30 W m^{-2} at higher and lower sun elevation, respectively. SFC and ATM NRF model diversity ranges between 5 and 8 % (increasing with

AeroCom Radiative Transfer Experiment

C. A. Randles et al.

Title Page

Abstract

Introduction

Conclusions

References

Tables

Figures

◀

▶

◀

▶

Back

Close

Full Screen / Esc

Printer-friendly Version

Interactive Discussion



5 SZA). We compare Case 2b results to clear-sky results from the Direct RF experiment, which have an average SSA of 0.94 (i.e. less absorbing than Case 2b). After having first simulated the full aerosol life-cycle, the Direct RF models exhibits relatively good agreement in atmospheric normalized radiative forcing (RSD~14%; mean 62.5 $W m^{-2}$). However, there is a large range in TOA NRF (~-18 to -76 $W m^{-2}$; mean -31.2 $W m^{-2}$; RSD 64%) and SFC NRF (~ -38 to -96 $W m^{-2}$; mean -59.4 $W m^{-2}$; RSD 35%). Thus both studies indicate low inter-model diversity in simulating atmospheric absorption when more absorbing aerosols are considered. The higher RSD in surface NRF in Myhre et al. (2012) may reflect the use of geographic and model-dependent surface albedo.

4 Conclusions

15 In this study we examine the performance of multi- and two-stream radiative transfer schemes used in global climate models relative to reference data from high spectral resolution multi-angular methods. We examine the models in a controlled sense by prescribing both gaseous absorbers (water vapor and ozone) and simple aerosol optical properties (separately, scattering-only and more absorbing aerosols) with fixed surface albedo. Results are compared as a function of sun elevation and increasing trace gas amount.

20 Comparisons in clear-sky (aerosol- and cloud-free) Rayleigh atmosphere conditions of solar atmospheric transmissions indicate significant model bias from the reference line-by-line calculation (up to 4% at low sun elevation in humid conditions for the near-IR). This identifies deficiencies particularly in the representation of absorption by atmospheric water vapor. Diversity amongst models, quantified as the standard deviation as a percentage of the mean or relative standard deviation, is on the order of 2 to 4% for wavelengths where gaseous absorption is prominent (near-IR), and this diversity increases as water vapor slant path increases (or, as sun elevation decreases). In the

AeroCom Radiative Transfer Experiment

C. A. Randles et al.

Title Page

Abstract

Introduction

Conclusions

References

Tables

Figures

◀

▶

◀

▶

Back

Close

Full Screen / Esc

Printer-friendly Version

Interactive Discussion



Rayleigh atmosphere case, the largest model bias and diversity occur in the partitioning of total flux into direct and diffuse components.

In order to isolate the treatment of multiple scattering and absorption by aerosols, we computed the broadband solar top of the atmosphere aerosol radiative forcing. In the computation of forcing, a second call is made to the radiation models, now with prescribed aerosol optical properties, and fluxes at the TOA are differenced relative to the Rayleigh atmosphere case. The diversity amongst models in the TOA forcing is largest for purely scattering aerosols at high sun elevation (15%) and decreases with decreasing sun elevation. Increased aerosol absorption decreases the diversity in atmospheric and surface radiative forcing. This indicates that the treatment of multiple scattering contributes to the large inter-model diversity in top of the atmosphere aerosol radiative forcing, and this diversity may be important given the regionally diverse absorption characteristics of global aerosols.

When considering solar top of the atmosphere (TOA) radiative forcing by aerosols, deficiencies in gaseous transmission are less important than the treatment of multiple scattering. Relative to benchmark multi-directional line-by-line results, when scattering-only aerosols are considered, simpler two stream models over- and underestimate TOA aerosol radiative cooling as sun elevation decreases. Two-stream models underestimate the magnitude of radiative warming and cooling at higher and lower sun elevation when absorbing aerosols are considered. The bias in aerosol radiative forcing for the models in this study is on the order of 10-20%, with the highest bias occurring when considering scattering aerosols at high sun elevation.

The inter-model diversity reported in this study for specific sun elevations is generally higher than those reported for global, diurnally-averaged conditions (Myhre et al., 2012) even when the same aerosol optical properties are prescribed (Stier et al., 2012). All three AeroCom studies, however, indicate low inter-model diversity in atmospheric radiative forcing when more absorbing aerosols are considered. Both Stier et al. (2012) and this work show that atmospheric absorption is enhanced when con-

AeroCom Radiative Transfer Experiment

C. A. Randles et al.

[Title Page](#)[Abstract](#)[Introduction](#)[Conclusions](#)[References](#)[Tables](#)[Figures](#)[I◀](#)[▶I](#)[◀](#)[▶](#)[Back](#)[Close](#)[Full Screen / Esc](#)[Printer-friendly Version](#)[Interactive Discussion](#)

sidering scattering-only aerosol because the increased photon path-length increases molecular absorption, particularly by ozone.

For daily forcing simulations, biases in radiative forcing indicate that there is a tendency by the two-stream models to under- and overestimate aerosol forcing for absorbing and scattering-only aerosols, respectively, at low latitudes (with predominantly high sun elevations during the day). At high latitudes (with predominantly low sun-elevations during the day), scattering-only and absorbing aerosols both underestimate the magnitude of aerosol radiative cooling. From a climatological perspective, these daily biases may partially compensate one another when computing a global average radiative forcing; however, regionally and seasonally they may introduce systematic errors that can significantly impact aerosol climate effects.

Appendix A

We provide brief descriptions of the models used in this intercomparison; model characteristics are summarized in Table 1 and Appendix Table A1. We refer the reader to seminal works for details on radiative transfer theory and methods for solving the transfer equation (e.g., Chandrasekhar, 1960; van de Hulst, 1980; Lenoble, 1985; Liou, 1992). Models in the appendix are arranged by name in alphabetical order with the names of contributing investigators given in parenthesis.

A1 Beijing Climate Center (BCC-RAD; model #16, *H. Zhang, P. Lu*)

The Beijing Climate Center radiation transfer model (BCC-RAD) uses the correlated k -distribution (ck -D) algorithm adopted by Zhang et al. (2003, 2006a,b) and the 2-stream Eddington algorithm of radiative transfer. The $10 - 49000 \text{ cm}^{-1}$ spectral range ($0.204 - 1000 \mu\text{m}$) is divided into 17 bands (8 longwave and 9 shortwave). Eight major GHGs including H_2O , CO_2 , O_3 , N_2O , CH_4 , and Chlorofluorocarbons (CFCs) are considered.

AeroCom Radiative Transfer Experiment

C. A. Randles et al.

Title Page

Abstract

Introduction

Conclusions

References

Tables

Figures

◀

▶

◀

▶

Back

Close

Full Screen / Esc

Printer-friendly Version

Interactive Discussion



The HITRAN2000 database (Rothman et al., 2003) was used to give line parameters and cross sections; CKD_2.4 (Zhang et al., 2003) generated continuum absorption coefficients due to water vapor, CO₂, O₃, and O₂. The effective absorption coefficients of *ck-D* were calculated based on LBLRTM (Clough and Iacono, 1995) with a spectral interval of 1/4 of the mean spectral line half-width and with a 25 cm⁻¹ cutoff for line wings over each band (Clough et al., 1992; Clough and Iacono, 1995). Modeled molecular absorbers in the solar bands are H₂O (including continuum absorption), O₃ and O₂. Nominally, cloud optical properties are from Nakajima et al. (2000) and aerosol optical properties are calculated by Wei and Zhang (2011) and Zhang et al. (2012).

A2 Cloud-Aerosol-Radiation model (CAR; F. Zhang)

The Cloud-Aerosol-Radiation (CAR) Ensemble Modeling System currently incorporates 7 major cloud-aerosol radiation packages used in major research institutions worldwide: CAM (NCAR), RRTMG (NCEP, ECMWF, and future NCAR), GFDL (NOAA), GSFC (NASA), CCCMA (Canada), CAWCR (Australia), and FLG (popular for DOE/ARM). A general model description and basic skill evaluation of the CAR system is found in Liang and Zhang (2012); Zhang et al. (2013) and can also be found at <http://car.umd.edu>. For each radiative transfer code, radiative processes such as gaseous absorption and absorption and scattering by clouds and aerosol particles can be easily included or excluded depending on the aim of the study. Strikingly, cloud and aerosol properties can be decoupled from the radiative transfer calculation, making CAR a useful tool for the intercomparison of different cloud, aerosol and radiation schemes. We briefly provide a description of each radiation scheme in CAR used in this intercomparison:

A2.1 CAM radiation scheme (CAR-CAM, model #26)

The NCAR CAM model (Collins et al., 2004) calculates SW flux in a vertically inhomogeneous scattering-absorbing atmosphere using a delta-two-stream algorithm. The

AeroCom Radiative Transfer Experiment

C. A. Randles et al.

Title Page

Abstract

Introduction

Conclusions

References

Tables

Figures

◀

▶

◀

▶

Back

Close

Full Screen / Esc

Printer-friendly Version

Interactive Discussion



solar spectrum is divided into 19 discrete spectral and pseudo-spectral intervals: 7 for O_3 , 1 for the visible, 7 for H_2O including water-vapor continuum, 3 for CO_2 , and 1 for the near-infrared following Collins (1998). The solar absorption by water vapor between 1000 and $18\,000\text{ cm}^{-1}$ is treated using seven pseudo-spectral intervals with a constant specific extinction specified for each interval. These extinctions have been adjusted to minimize errors in heating rates and flux divergences relative to line-by-line (LBL) calculations for reference atmospheres (Anderson et al., 1986) using GENLN3 (Edwards, 1992) combined with the radiative transfer solver DISORT2 (Stamnes et al., 1988). This parameterization is essentially an exponential sum fit (e.g., Wiscombe and Evans, 1977). LBL calculations are performed with the HITRAN 2000 line database (Rothman et al., 2003) and the Clough, Kneizys, and Davies (CKD) model version 2.4.1 (Clough et al., 1989). The Rayleigh scattering optical depths in the seven pseudo-spectral intervals have been changed for consistency with LBL calculations of the variation of water-vapor absorption with wavelength. Modeled molecular absorbers in the solar bands are H_2O (including continuum absorption), CO_2 , and O_3 .

A2.2 CAWCR radiation scheme (CAR-CAWCR, model #25)

The Center for Australian Weather and Climate Research (CAWCR) Sun-Edwards-Slingo radiation scheme (SES2) is a model used in numerical weather prediction (NWP) and climate models (Sun and Rikus, 1999; Sun, 2008) and is based on the Edwards and Slingo (1996) radiation scheme. The model calculates SW flux in a vertically inhomogeneous scattering-absorbing atmosphere using a delta-two-stream algorithm, and accounts for the absorption of all radiatively important gases using the exponential sum fitting transmission method (ESFT). The line-by-line radiative transfer model (GENLN2) (Edwards, 1992) provides the absorption coefficients for the ESFT method. The accuracy of these absorption coefficients has been established by comparison of GENLN2 with other line-by-line models such as LBLRTM (Clough et al., 1992) and measurements from ARM (Stokes and Schwartz, 1994). Modeled molecular absorbers in the solar bands are H_2O (including continuum effects), O_3 , CO_2 , CH_4 , N_2O , and

32654

ACPD

12, 32631–32706, 2012

AeroCom Radiative Transfer Experiment

C. A. Randles et al.

Title Page

Abstract

Introduction

Conclusions

References

Tables

Figures

◀

▶

◀

▶

Back

Close

Full Screen / Esc

Printer-friendly Version

Interactive Discussion



O₂. There are 9 solar bands with total 27 sub-spectra over 0.2~5.0 μm. The radiation code has two novel features: one is the flexible spectral resolution of the code, and the second is that the same spectral framework for both the longwave and shortwave components. This makes the code easy to maintain and develop. In this scheme, the effect of the additional solar energy (about 12 Wm⁻² in 0–2500 cm⁻¹) is also included simply by imposing this energy onto the infrared downward flux for the appropriate infrared bands (Li and Barker, 2005).

A2.3 CCCMA radiation scheme (CAR-CCCMA, model #17)

The Canadian Climate Center radiation scheme calculates SW flux in a vertically inhomogeneous scattering-absorbing atmosphere using a delta-Eddington approximation and adding method (Li et al., 2005). It accounts for the absorption of all radiatively important gases using the correlated *k*-distribution method (*ck*-D) with fits to the HITRAN 96 (Li and Barker, 2005). There are 4 solar bands with a total of 35 sub-spectra for pressure layers > 1 mb or 40 sub-spectra for pressure layers < 1 mb over the range 0.2~4.0 μm. Modeled molecular absorbers in the solar bands are H₂O, O₃, CO₂, and O₂. This model contains a proper treatment of spectral overlap between solar and infrared radiation. The effect of the additional solar energy (~12 W m⁻² in 0–2500 cm⁻¹) is also included simply by imposing this energy onto the infrared downward flux for the appropriate infrared bands (Li and Barker, 2005). A new parameterization for the effects of atmospheric spherical curvature and refraction and their impact on radiative transfer has been incorporated (Li and Shibata, 2006). This rigorous scheme enables variations in both the path length and the gaseous amount along a solar direct beam. These variations can then be accurately evaluated in the radiative transfer process, and we find better results in flux and heating rates when compared to other parameterizations.

AeroCom Radiative Transfer Experiment

C. A. Randles et al.

Title Page

Abstract

Introduction

Conclusions

References

Tables

Figures

◀

▶

◀

▶

Back

Close

Full Screen / Esc

Printer-friendly Version

Interactive Discussion



A2.4 Fu-Liou-Gu radiation scheme (CAR-FLG, model #9)

The Fu-Liou-Gu scheme (Gu et al., 2010, 2011; Liou et al., 2008) is a modified and improved version based on the original Fu-Liou scheme (Fu and Liou, 1992, 1993). The model calculates SW flux in a vertically inhomogeneous scattering-absorbing atmosphere using either a delta-four-stream approximation or a delta-two-stream (Eddington) approximation. It and accounts for the absorption of all radiatively important gases using the correlated- k distribution method (ck -D) fits to the 1982 version of the AFGL data type (Fu and Liou, 1992) with some updates fits to HITRAN 2000 (Zhang et al., 2005). There are 6 solar bands with total 54 sub-spectra over 0.2~4.0 μm . Modeled molecular absorbers in the solar bands are H₂O (including H₂O continuum absorption), O₃, CO₂, CH₄, N₂O, CO and O₂. Here, the four-stream method is used for this intercomparison.

A2.5 GFDL radiation scheme (CAR-GFDL, model #29)

The NOAA GFDL radiation scheme (Freidenreich and Ramaswamy, 1999) uses the exponential-sum-fit technique (ESFT) to develop the parameterization of water vapor transmission in the main absorbing bands. An absorptivity approach is used to represent the heating contributions by CO₂ and O₂, and a spectral averaging of the continuum-like properties is used to represent the O₃ heating. Spectral line data for H₂O, CO₂, O₃, CH₄ and N₂O are now based on the HITRAN92 catalog (Rothman et al., 1992). The delta-Eddington method is used to solve for the reflection and transmission, while the “adding” method is used to combine the layers. The single-scattering properties can account for all types of scattering and absorbing constituents (molecules, drops, ice particles, and aerosols), given their respective single-scattering properties and mass concentrations. There are 18 solar bands with total 38 sub-spectra over 0.173~20.0 μm .

AeroCom Radiative Transfer Experiment

C. A. Randles et al.

Title Page

Abstract

Introduction

Conclusions

References

Tables

Figures

◀

▶

◀

▶

Back

Close

Full Screen / Esc

Printer-friendly Version

Interactive Discussion



A2.6 GSFC radiation scheme (CAR-GSFC, model #15)

The NASA GSFC radiation scheme includes the absorption due to water vapor, O₃, O₂, CO₂, clouds, and aerosols. Interactions among the absorption and scattering by clouds, aerosols, molecules (Rayleigh scattering), and the surface are fully taken into account.

5 There are total 11 SW bands with 38 sub-spectra from 0.175 μm to 10 μm (Chou and Suarez, 1999). Depending upon the nature of absorption, different approaches are applied to different absorbers. In the ultraviolet (UV) and photosynthetically active (PAR) region, the spectrum is divided into 8 bands, and a single O₃ absorption coefficient and Rayleigh scattering coefficient are used for each band. In the infrared, the spectrum is
10 divided into 3 bands, and the *ck*-D method is applied with ten absorption coefficients used in each band. The flux reduction due to O₂ is derived from a simple function, while the flux reduction due to CO₂ is derived from precomputed tables. Reflection and transmission of a cloud and aerosol-laden layer are computed using the delta-Eddington approximation. Fluxes are then computed using the two-stream adding approximation.
15 A special feature of this model is that absorption due to a number of minor absorption bands is included. Individually the absorption in those minor bands is small, but collectively the effect is large, ~10 % of the atmospheric heating.

A2.7 RRTMG radiation scheme (CAR-RRTMG, model #11)

See Appendix A14.

20 A3 ECHAM5.5; model #18, (J. Quaas, S. Kinne, P. Stier)

The ECHAM5.5 general circulation model (Roeckner et al., 2003) used in several contributions to the AEROCOM project applies a solar radiative transfer scheme based on Fouquart and Bonnel (1980). In a two-stream approximation, scattering and absorption by molecules and aerosols are taken into account. Since the update by Cagnazzo
25 et al. (2007), six bands are used, with intervals between 0.185 μm, 0.25 μm, 0.44 μm,

AeroCom Radiative Transfer Experiment

C. A. Randles et al.

Title Page

Abstract

Introduction

Conclusions

References

Tables

Figures

◀

▶

◀

▶

Back

Close

Full Screen / Esc

Printer-friendly Version

Interactive Discussion



**AeroCom Radiative
Transfer Experiment**

C. A. Randles et al.

[Title Page](#)[Abstract](#)[Introduction](#)[Conclusions](#)[References](#)[Tables](#)[Figures](#)[◀](#)[▶](#)[◀](#)[▶](#)[Back](#)[Close](#)[Full Screen / Esc](#)[Printer-friendly Version](#)[Interactive Discussion](#)

0.69 μm , 1.19 μm , 2.38 μm and 4.0 μm . The range 0.185–0.69 μm is considered the visible range, the range 0.69–4.0 μm , the near-infrared. We use the off-line radiation code extracted by Klocke et al. (2011) and take into account the effects of water vapor, ozone, methane and N_2O from the prescribed profiles, as well as of carbon dioxide with a constant mixing ratio of 348 ppmv. Carbon monoxide is not considered in the radiation, and the mixing ratios of chloroflourocarbons are set to zero.

The configuration is considered as an open ocean surface, and the vertical resolution is chosen as in the input files, where the boundary of the lowest surface is set to 0 km, and the layer-mean values are the averages of the layer interfaces. The uppermost layer-mean values are considered the same as at its lower boundary, with the temperature at the upper boundary as at the lower one, the pressure at the upper boundary 0 hPa, and the layer-mean pressure half the pressure at the lower boundary. For the aerosols, the Ångström exponent is used to extrapolate the 550 nm optical depth to the other bands considering the band-average wavelength. The single-scattering albedo is assumed spectrally constant.

A4 University of Reading Edwards and Slingo (1996, ES96), models #20-23, (E. Highwood, C. Ryder, B. Harris)

The Edwards and Slingo radiation scheme (ES96) is a flexible radiative transfer model as described by Edwards and Slingo (1996) with updates from Walters et al. (2011). Results using the offline version released by the Met Office on 21 December 2009 are presented using a two stream practical improved flux method (PIFM, Zdunkowski et al., 1980). The user is able to define the number of spectral bands and model vertical levels. The spectral resolution is set by an external spectral file. The user is able to use (and adjust) spectral files supplied with the code, or create new versions. Here we provide results using standard supplied versions of spectral files with either 6 or 220 spectral bands covering wavelengths of 0.2 to 10 microns. The spectral file supplies details of atmospheric radiative properties such as gaseous absorption which may

differ between spectral files. Therefore each subsequent description of ES96 makes reference to a specific spectral file and differences therein.

Water vapor terms are updated based on the HITRAN 2001 database (Rothman et al., 2003) for gaseous absorption coefficients, with updates up to 2003. For all other gases absorption is based on HITRAN92. Gaseous absorption is represented according to Cusack et al. (1999) using a correlated- k method.

ES96 allows the user to select whether delta-rescaling is implemented for particle scattering (ES96-D). Delta-rescaling provides more accurate total flux measurements at the expense of the partitioning between the direct and diffuse fluxes since delta-rescaling effectively increases the flux in the direct beam to account for strong forward aerosol scattering.

Results are presented using ES96 with 6 and 220 spectral bands (Model #20 ES96-6 and Model #21 ES96-220), using the spectral files “sp_sw_hadgem1_3r” and “sp_sw_220_r”, respectively. Aerosol properties in the spectral files are adjusted to represent AeroCom protocol requirements. Particle scattering is presented both for cases where no delta rescaling is included (model #20 ES96-6 and Model #21 ES96-220) and where delta rescaling is included (model #22 ES96-6-D and Model #23 ES96-220-D).

Absorption due to CO₂ and O₂ concentrations are set to 0.579 g kg⁻¹ and 231 g kg⁻¹ which are constant with altitude, absorption due to H₂O and O₃, are included as prescribed by AeroCom. N₂O and CH₄ are included from the AFGL standard atmospheres in the 220 band cases (ES96-220) but are excluded in the 6 band cases (ES96-6). CO is not included.

A5 FORTH (model #28, I. Vardavas, N. Hatzianstassiou, C. Matsoukas)

The incoming solar irradiance conforms to the spectral profile of Gueymard (2004). The model apportions 69.48 % of the incoming spectral irradiance to the ultra violet-visible-near infrared (UV-Vis-NIR) part (0.20–1 μm) and 30.52 % to the near infrared-infrared (NIR-IR) part (1–10 μm). The radiative transfer equations are solved for 118 separate wavelengths for the UV-Vis-NIR part and for 10 bands for the NIR-IR part,

AeroCom Radiative Transfer Experiment

C. A. Randles et al.

Title Page

Abstract

Introduction

Conclusions

References

Tables

Figures

◀

▶

◀

▶

Back

Close

Full Screen / Esc

Printer-friendly Version

Interactive Discussion



using the delta-Eddington method as modified by Joseph et al. (1976). For a more detailed model description the reader is referred to Hatzianastassiou et al. (2004b, 2007a); Hatzianastassiou et al. (2007b) and Vardavas and Taylor (2007). The model takes into account clouds, Rayleigh scattering due to atmospheric gas molecules, absorption from O₃, O₂, CO₂, H₂O, and CH₄, and scattering and absorption due to aerosols. The model output includes downwelling and upwelling fluxes at the top of atmosphere, at the surface and at any atmospheric height.

A6 Fu-Liou Radiative Transfer Model

A6.1 NASA LaRC Fu-Liou RTM (LaRC-FL; model #10; F. G. Rose, S. Kato)

The NASA Langley (LaRC) Fu-Liou Radiative Transfer Model is a modified version based on the original Fu-Liou scheme (Fu and Liou, 1992, 1993). This scheme uses a two-stream delta-Eddington approximation to calculate shortwave flux and the correlated-*k* distribution method (*ck*-D) for gas absorption (coefficients based on HITRAN 2000 including SW continuum absorption). There are 18 shortwave bands (10 visible, 8 near-infrared) spanning the wavelength range 0.17–4.0 μm. The visible to near-IR split is located at 14 500 cm⁻¹ (0.6896 μm). The code was modified from the original Fu-Liou code to improve treatment of Rayleigh scattering and gas absorption. While two-streams were used for this intercomparison, the code can also be configured for four-streams and gamma-weighted two-streams. The vertical resolution was 32 layers, with 1-km resolution in the troposphere.

A6.2 GSFC Fu-Liou Radiative Transfer Model (GSFC-FL; model #8; H. Yu)

The Fu-Liou model used by the NASA Goddard Space Flight Center (GSFC) group is a broadband radiative transfer model with a delta-four-stream approximation (Fu and Liou, 1992, 1993). The model accounts for solar radiation over 0.2–4.0 μm range with 6 bands. The first band in the UV-visible (0.2–0.7 μm) is divided into 10 subinter-

AeroCom Radiative Transfer Experiment

C. A. Randles et al.

Title Page

Abstract

Introduction

Conclusions

References

Tables

Figures

◀

▶

◀

▶

Back

Close

Full Screen / Esc

Printer-friendly Version

Interactive Discussion



vals where the spectral dependences of O₃ absorption and aerosol optical properties are incorporated explicitly. Absorption data for H₂O, O₂, and CO₂ are taken from HITRAN82 (Rothman et al., 1983) and that for O₃ are based on Howard et al. (1961). Rayleigh scattering is parameterized according to Slingo and Schrecker (1982). For this experiment, a total of 73 vertical layers are used, with a resolution of 1 km below 25 km and 2 km for altitudes of 26–120 km.

A7 GENLN2-DISORT (model #1, G. Myhre)

GENLN2-DISORT is the GENLN2 (Edwards, 1992) line-by-line (LBL) model coupled to a discrete-ordinate method (DISORT; Stamnes et al., 1988) for calculation of radiative fluxes. The model has been used for radiative transfer calculation in the solar spectrum previously (Myhre et al., 2002) and in an intercomparison study (Forster et al., 2011). The GENLN2 LBL code is updated with absorption data from the HITRAN-2008 database (Rothman et al., 2009). Absorption by H₂O, CO₂, O₃, O₂, and CH₄ has been included in the simulations. The spectral resolution in the computations was 0.02 cm⁻¹. The extraterrestrial spectral solar irradiance had a 1 nm resolution from Lean et al (2005) in simulations and the full spectral region considered has been from 0.2 μm to 5.0 μm. For this intercomparison the radiative fluxes were computed using 16 streams in the DISORT code.

A8 libRadtran

A8.1 LMU-libRadtran (model #7, B. Mayer)

The Ludwig-Maximilians-Universitaet version of libRadtran (Mayer and Kylling, 2005) uses 6-streams, the discrete-ordinate method (DISORT2) for calculation of radiative fluxes, and a plane-parallel atmosphere assumption. Molecular absorption is treated with a *k*-distribution of 32 bands (Kato et al., 1999). The shortwave (SW) bands are

AeroCom Radiative Transfer Experiment

C. A. Randles et al.

Title Page

Abstract

Introduction

Conclusions

References

Tables

Figures

◀

▶

◀

▶

Back

Close

Full Screen / Esc

Printer-friendly Version

Interactive Discussion



the sum of bands 1–32 (240.1–4605.7 nm). The visible (VIS) bands are the sum of 16 bands (204.1–704.4 nm).

A8.2 LMU-2stream (model #13, B. Mayer)

This is a version of libRadtran that uses a two-stream delta-Eddington radiative transfer solver rather than DISORT. Gaseous transmission is the same as in LMU-libRadtran (A8.1).

A8.3 FMI-libRadtran (model #6, J. Huttunen)

The Finnish Meteorological Institute version of libRadtran (FMI-libRadtran, Mayer and Kylling, 2005) uses 8-streams and the DISORT2 solver. Delta-M scaling is switched on. Solar spectral irradiance is taken from Gueymard (2004).

A9 Matrix-Operator Model (MOMO; model #31; J. Fischer, L. Doppler)

MOMO is a radiation transfer code for radiance and irradiance computations in the ocean and atmosphere (Fell and Fischer, 2001; Fischer and Grassl, 1984). Its spectral range is 0.2–100 μm . MOMO combines the matrix-operator (Plass et al., 1973) and adding doubling method. The gas transmission is computed using a code CGASA, derived from XTRA (Rathke and Fischer, 2000). CGASA combines the water-vapor continuum model of Clough et al. (1992) with Voigt line computations. Line properties are taken from the HITRAN-2008 spectral database (Rothman et al., 2009). A k -distribution method is used, following Bennartz and Fischer (2000). This k -distribution is exact (we do not make the correlated approximation). For this study, we computed MOMO simulations within 55 UV bands and 12 VIS bands, in order to consider the high variation of Rayleigh optical depth. 30 bands have been defined to model the near-IR radiation. 3000 k -intervals have been needed to model water vapor, ozone and mixed gas absorption lines with accuracy. The vertical resolution was 1 km from 0 to 26 km and

AeroCom Radiative Transfer Experiment

C. A. Randles et al.

Title Page

Abstract

Introduction

Conclusions

References

Tables

Figures

◀

▶

◀

▶

Back

Close

Full Screen / Esc

Printer-friendly Version

Interactive Discussion



2 km from 26 to 100 km. Within aerosols layers, the adding-doubling method divided the layers in 2^n sub-layers in order to consider multi-scattering.

A10 MPI Radiative Transfer schemes (*S. Kinne*)

A10.1 MPI-2stream (model #14)

5 The Max Plank Institute for Meteorology model computes radiative fluxes with a two-stream method (e.g., Meador and Weaver, 1980) for the solar and infrared spectral region. This necessitates repeated applications (ca 120 times) to properly approximate the spectral variability of atmospheric particle properties (via 8 solar and 12 infrared spectral sub-bands) and of major trace-gases (O_3 , CO_2 , CO , N_2O , and CH_4 - through
10 a number of exponential terms in each of the sub-bands). The trace gas absorption (including water vapor) in the near-IR is based on LOWTRAN-5 data and ozone absorption data are based on Vigroux (1953).

A10.2 MPI-MOM (model #30)

15 The Max Plank Institute for Meteorology MPI-MOM scheme combines the matrix-operator (Plass et al., 1973) and adding doubling method. The method was prepared for atmospheric broadband solar radiative transfer calculation by Grassl (1978). The trace gas absorption (including water vapor) in the near-IR is based on LOWTRAN-5 data and ozone absorption data are based on Vigroux (1953).

A11 Oslo-DISORT (model #3, *G. Myhre*)

20 The Oslo-DISORT code uses the discrete-ordinate method (DISORT) (Stamnes et al., 1988) specifically designed for calculations of atmospheric aerosols. The model has a high number of streams (8), but a low spectral resolution (4 bands), with the main emphasis on wavelengths below $1.5 \mu m$. The spectral regions are $0.3-0.5 \mu m$, $0.5-0.85 \mu m$, $0.85-1.5 \mu m$, and $1.5-4.0 \mu m$. The absorption by water vapor and ozone

AeroCom Radiative Transfer Experiment

C. A. Randles et al.

Title Page

Abstract

Introduction

Conclusions

References

Tables

Figures

◀

▶

◀

▶

Back

Close

Full Screen / Esc

Printer-friendly Version

Interactive Discussion



AeroCom Radiative Transfer Experiment

C. A. Randles et al.

Title Page

Abstract

Introduction

Conclusions

References

Tables

Figures

◀

▶

◀

▶

Back

Close

Full Screen / Esc

Printer-friendly Version

Interactive Discussion



is taken into account by the exponential-sum fitting method (ESFT, Wiscombe and Evans, 1977). The number of exponential-sum fitting terms for each spectral region is two or three. Higher accuracy can be obtained with a higher number of exponential-sum fitting terms, but this increases the computational time. The GENLN2 line-by-line model (Edwards, 1992) is used to calculate the transmission data for water vapor with spectroscopic data from the HITRAN92 database (Rothman et al., 1992). Cross-sections for ozone in the ultraviolet and visible region are from WMO (1985). Oslo-DISORT has been validated against the GENLN2-DISORT LBL model for various cases for aerosols with agreement within 10 % (Myhre et al., 2002).

A12 Oslo-2stream (model #4, G. Myhre)

2-stream version of Oslo-DISORT (model #3; see above).

A13 RFM DISORT (RFMD; model #2, E. Highwood, C. Ryder, B. Harris)

RFM DISORT is the Reference Forward Model (RFM), a line-by-line radiative transfer model, coupled to a discrete ordinate method (DISORT; Stamnes et al., 1988) for scattering calculations. RFM has been developed at Oxford University, UK (www.atm.ox.ac.uk/RFM/) and is based on the GENLN2 model (Edwards, 1992). The spectral resolution used was 1 cm^{-1} , covering wavelengths from 0.2 to 10 microns with 4 streams in DISORT. The HITRAN 2004 database (Rothman et al., 2005) is used for gaseous absorption coefficients.

A14 RRTMG (model #11 CAR-RRTMG, F. Zhang and model #12 RRTMG-SW, L., Oreopoulos, D. Lee)

RRTMG-SW (http://rtweb.aer.com/rrtm_frame.html) is a solar radiative transfer model that utilizes the correlated- k (ck -D) approach to treat gaseous absorption and to calculate shortwave fluxes and heating rates efficiently and accurately in a large-scale model environment (Clough et al., 2005; Iacono et al., 2008). Modeled sources of extinction

AeroCom Radiative Transfer Experiment

C. A. Randles et al.

Title Page

Abstract

Introduction

Conclusions

References

Tables

Figures

◀

▶

◀

▶

Back

Close

Full Screen / Esc

Printer-friendly Version

Interactive Discussion



are water vapor, carbon dioxide, ozone, methane, oxygen, nitrogen, aerosols, clouds, and Rayleigh scattering. The solar spectrum, 0.2–12 μm , is divided into 14 bands and spectral extinction integration within each band is accomplished using a variable number of g-points that add to 112 g-points for the entire solar spectrum. Absorption coefficient data for *ck*-D are obtained directly from the line-by-line radiative transfer model, LBLRTM, which has been extensively validated against observations, principally at the ARM SGP site. Scattering is treated using the delta-Eddington flavor (Joseph et al., 1976) of the two-stream approximation (Meador and Weaver, 1980; Oreopoulos and Barker, 1999).

The last solar band 820–2600 cm^{-1} is coded out of sequence to preserve spectral continuity with the longwave bands. For the visible/UV calculations of this paper the normalized fluxes either included band 9 (12 850–16 000 cm^{-1} or 0.625–0.778 μm) or were only integrated up to 0.625 μm ; contributors Oreopoulos and Lee (model #11) provide results for both, which are averaged in the intercomparison.

A15 UKMO HadGEM2 GCM (model #24, S. T. Rumbold)

The online radiation code in HadGEM2 is consistent with the offline version of ES96 by design and is maintained as such at the UK Met Office (UKMO). A description of the online implementation can be found in Martin et al. (2011). For the UKMO-HadGEM2 contribution to this intercomparison, the offline code is used and is configured in an identical manner to that of the HadGEM2 online radiation. This configuration is as in ES96-6-D (Model #22), but with vertical profiles of gases interpolated to mid-levels linearly in the logarithm of pressure. All AeroCom prescribed gases are used apart from N_2O , CO and CH_4 as they are not included in the shortwave part of the online radiation scheme. Where needed, aerosol was prescribed at constant mass mixing ratio in the two lower most model layers (zero elsewhere) to achieve the correct optical depth.

A16 ULAQ (model #27, G. Pitari, G. Di Genova)

The University of L'Aquila radiative transfer module, operating on-line in the climate-chemistry coupled model ULAQ-CCM, is a two-stream delta-Eddington approximation model (Toon et al., 1989) used for chemical species photolysis rate calculation in UV-visible wavelengths and for solar heating rates and radiative forcing in UV-VIS-NIR bands. Species cross sections are updated using JPL (2011) recommendations from the MPI-MAINZ database, while water vapor absorption data are derived from HITRAN92. Schumann-Runge bands are treated following the parameterization of Minshwaner et al. (1993) based on (fixed-T) ODF formulation. Diurnal averages are calculated with a 5 point Gaussian quadrature.

Top-of-atmosphere solar fluxes are taken from SUSIM-SL2 and LOWTRAN7 and are carefully integrated on the wavelength bins used in the model: they are in total 150 in the UV and visible range and 100 in the NIR, covering the solar spectrum from Lyman-alpha up to 7 μm . Sun-earth distance is calculated daily as a function of orbit eccentricity and the solar cycle is included. Sphericity is treated by means of Chapman functions (Dahlback and Stames, 1991). Refraction is taken into account with an iterated ray-tracing technique in a simple exponential refraction model.

Absorption/scattering optical depths take into account Rayleigh scattering, absorption from O_3 , O_2 , NO_2 , SO_2 , H_2O , CO_2 and scattering/absorption from aerosol particles. Aerosol extinction values are passed daily from the ULAQ-CCM aerosol module to the radiative transfer module, with appropriate wavelength-dependent values of Q-ext, g , and single scattering albedo, given the calculated size distribution of the particles. Surface albedo is nominally taken from MERRA 2D hourly averaged data.

A17 UMD-SRB (model #19, Y. Ma and R. T. Pinker)

The University of Maryland Surface Radiative Budget radiative transfer module used in the prescribed tests is used in satellite retrieval of shortwave fluxes. It calculates broadband SW radiation field in a plane-parallel, vertically inhomogeneous, scattering

AeroCom Radiative Transfer Experiment

C. A. Randles et al.

Title Page

Abstract

Introduction

Conclusions

References

Tables

Figures

◀

▶

◀

▶

Back

Close

Full Screen / Esc

Printer-friendly Version

Interactive Discussion



AeroCom Radiative Transfer Experiment

C. A. Randles et al.

[Title Page](#)[Abstract](#)[Introduction](#)[Conclusions](#)[References](#)[Tables](#)[Figures](#)[◀](#)[▶](#)[◀](#)[▶](#)[Back](#)[Close](#)[Full Screen / Esc](#)[Printer-friendly Version](#)[Interactive Discussion](#)

and absorbing atmosphere. The model accounts for (1) absorption by water vapor and ozone; (2) Rayleigh scattering; (3) scattering and absorption by aerosols and cloud droplets; and (4) multiple reflection between the atmosphere and surface. Radiative transfer is dealt with the delta-Eddington approximation. We have two versions of the model. In one, SW fluxes are computed in 7 broadband intervals (0.2–0.4, 0.4–0.5, 0.5–0.6, 0.6–0.7, 0.7–1.19, 1.19–2.38 and 2.38–4.00 μm). In the other, only in 5 broadband intervals (0.2–0.4, 0.4–0.5, 0.5–0.6, 0.6–0.7, and 0.7–4.0 μm). The results presented in the AeroCom experiment use the 7 bands. Water vapor absorption is accounted for in the 0.7–4.0 μm spectral intervals. Ozone is accounted for in 0.2–0.4 μm (UV) and in 0.5–0.6 μm (VIS) spectral intervals. For water vapor and water vapor continuum, we use the k -distribution method proposed by Chou and Lee (1996) and further advanced by Tarasova and Fomin (2000). Reference transmission database is HITRAN96. For ozone, parameterization follows Lacis and Hansen (1974). The model is configured with variable number of layers (>31), depending on presence of aerosol and/or clouds. More details can be found in (Wang and Pinker, 2009).

A18 UNIVIE-Streamer (model #5, D. Neubauer, R. Hitzenberger)

Streamer (Key and Schweiger, 1998) is a radiative transfer model employing the discrete-ordinate (DISORT) method (Stamnes et al., 1988) to solve the radiative transfer equation. We have modified Streamer to increase the spectral range for radiative transfer calculations and to include additional scattering and absorbing gases (Neubauer et al., 2011). The modified model UNIVIE-Streamer accounts for absorption by atmospheric gases using exponential fits (Wiscombe and Evans, 1977) to the LOWTRAN7 (Kneizys et al., 1988) and LBLRTM (Clough et al., 2005) transmittances. In all cases 8 streams and 24 unequal spectral intervals in the solar range 0.2–5.0 μm and 10 bands in the UV/visible range 0.2–0.69 μm were used for computing fluxes. Aerosol optical properties were computed separately using Mie theory for 60 wavelengths (7 in the UV/visible range). Note that the number of ESFT terms varies between 0 and 30 for each spectral band and each atmospheric gas.

AeroCom Radiative Transfer Experiment

C. A. Randles et al.

Title Page

Abstract

Introduction

Conclusions

References

Tables

Figures

◀

▶

◀

▶

Back

Close

Full Screen / Esc

Printer-friendly Version

Interactive Discussion



Acknowledgements. C. Randles was supported by the NASA Atmospheric Composition Modeling and Analysis (ACMAP) Program Grant NNX11AK20G under R. Eckman. G. Myhre was supported by the projects SLAC(Short Lived Atmospheric Components) and EarthClim funded by the Norwegian Research Council. J. Huttunen was supported by Graduate school in Physics, Chemistry, Biology and Meteorology of Atmospheric Composition and Climate Change: From Molecular Processes to Global Observations and Models. D. Neubauer and R. Hitzemberger acknowledge financial funding from the University of Vienna, FPF 234 and thank Warren Wiscombe (Goddard Space Flight Center) for the ESFT program. D. Neubauer gratefully acknowledges the support by research fellowship F-369, University of Vienna. L. Oreopoulos and D. Lee acknowledge support from NASA's Modeling Analysis and Prediction program managed by D. Considine. The work of R. T. Pinker and Y. Ma was supported under grant NNX11AF54G through the NASA Science of Terra and Aqua Program and grant NNX08AN40A from the NASA Science Mission Directorate-Division of Earth Science. S. T. Rumbold was supported by the Joint DECC and Defra Integrated Climate Programme (GA01101). H. Yu was supported by NASA ACPMAP, managed by R. Eckman. F. Zhang was supported by US DOE office of Biological and Environmental Research (BER) DE-SC0001683. H. Zhang was funded and supported by the "Strategic Priority Research Program – Climate Change: Carbon Budget and Relevant Issues" (XDA05040200) and "National High-tech Research and Development (863) Project (2011AA12A104)". P. Lu was supported by National Basic Research Program of China (2011CB403405).

References

- Anderson, G. P., Clough, S. A., Kneizys, F. X., Chetwynd, J. H., and Shettle, E. P.: AFGL atmospheric constituent profiles (0–120 km). Technical Report AFGL-TR-86-0110, AFGL (OPI), Hanscom AFB, MA. 01736, 1986. 32638, 32654
- Arking, A.: Effects of bias in solar radiative transfer codes on global model simulations, *Geophys. Res. Lett.*, 32, L20717, doi:10.1029/2005GL023644, 2005. 32637
- Bennartz, R. and Fischer, J. A.: A modified k-distribution approach applied to narrow band water vapor and oxygen absorption estimates in the near infrared, *J. Quant. Spectrosc. Radiat. Transfer*, 66, 539–553, 2000. 32662

AeroCom Radiative Transfer Experiment

C. A. Randles et al.

Title Page

Abstract

Introduction

Conclusions

References

Tables

Figures

◀

▶

◀

▶

Back

Close

Full Screen / Esc

Printer-friendly Version

Interactive Discussion



- Bodhaine, B. A., Wood, N. B., Dutton, E. G., and Slusser, J. R.: On Rayleigh optical depth calculations, *J. Atmos. Ocean Technol.*, 16, 1854–1861, 1999.
- Boucher, O., Schwartz, S. E., T. P. Ackerman et al.: Intercomparison of models representing direct shortwave radiative forcing by sulfate aerosols, *J. Geophys. Res.*, 103, 16979–16998, 1998. 32634, 32636, 32637
- 5 Buras, R., Dowling, T., and C. Emde1: New secondary-scattering correction in DISORT with increased efficiency for forward scattering, *J. Quant. Spectrosc. Radiat. Transfer*, 112, 2028–2034, 2011.
- Cagnazzo, C., Manzini, E., Giorgetta, M. A., Forster, P. M. De F., and Morcrette, J. J.: Impact of an improved shortwave radiation scheme in the MAECHAM5 General Circulation Model, *Atmos. Chem. Phys.*, 7, 2503–2515, doi:10.5194/acp-7-2503-2007, 2007. 32657
- 10 Chandrasekhar, S.: *Radiative Transfer*, Dover, Mineola, NY, USA, 1960. 32652
- Chou, M.-D. and Lee, K. T.: Parameterizations for the absorption of solar radiation by water vapor and ozone, *J. Atmos. Sci.*, 53, 1203–1208, 1996. 32667
- 15 Chou, M.-D. and Suarez, M. J.: A solar radiation parameterization for atmospheric studies. [Last revision on March 2002] Technical Report Series on Global Modeling and Data Assimilation, M.J. Suarez (Ed.), NASA/TM-1999-104606, Vol. 15, Goddard Space Flight Center, Greenbelt, MD, 42 pp., 1999. 32657
- Chýlek, P. and Coakley, J. A.: *Aerosols and Climate*, Science, 183, 75–77, 1974. 32634
- 20 Clough, S. A., Kneizys, F. X., and Davies, R. W.: Line shape and the water vapor continuum, *Atmos. Res.*, 23, 229–241, 1989. 32654
- Clough, S. A. and Iacono, M. J.: Line-by-line calculation of atmospheric fluxes and cooling rates 2. Application to carbon dioxide, ozone, methane, nitrous oxide and the halocarbons, *J. Geophys. Res.*, 100, 16519–16535, 1995. 32653
- 25 Clough, S. A., Iacono, M. J. and J. L. Moncet: Line-by-line calculations of atmospheric fluxes and cooling rates: Application to water vapor. *J. Geophys. Res.*, 97, 15761–15785, 1992. 32653, 32654
- Clough, S. A., Shephard, M. W., Mlawer, E. J., Delamere, J. S., Iacono, M. J., Cady-Pereira, K., Boukabara, S., and Brown, P. D.: Atmospheric radiative transfer modeling: a summary of the AER codes. *J. Quant. Spectrosc. Radiat. Transf.*, 91, 233–244. doi:10.1016/j.jqsrt.2004.05.058, 2005. 32664, 32667
- 30 Collins, W. D.: A global signature of enhanced shortwave absorption by clouds, *J. Geophys. Res.*, 103, 31669–31679, 1998. 32654

AeroCom Radiative Transfer Experiment

C. A. Randles et al.

Title Page

Abstract

Introduction

Conclusions

References

Tables

Figures

◀

▶

◀

▶

Back

Close

Full Screen / Esc

Printer-friendly Version

Interactive Discussion



Collins, W. D., Rasch, P. J., Boville, B. A., Hack, J. J., McCaa, J. R., Williamson, D. L., Kiehl, J. T., Briegleb, B., Bitz, C., Lin, S.-J., Zhang, M., and Dai, Y.: Description of the NCAR Community Atmosphere Model (CAM 3.0), NCAR Technical Note, NCAR/TN-464+STR, 226 pp., 2004. 32653

5 Cusack, S., Edwards, J., and Crowther, J.: Investigating k distribution methods for parameterizing gaseous absorption in the Hadley Centre Climate Model, *J. Geophys. Res.*, 104, 2051–2057, doi:10.1029/1998JD200063, 1999. 32659

Dahlback, A., and Stamnes, K.: A new spherical model for computing the radiation field available for photolysis and heating at twilight, *Planet. Space Sci.*, 39, 671–683, 1991. 32666

10 Dentener, F., Kinne, S., Bond, T., Boucher, O., Cofala, J., Generoso, S., Ginoux, P., Gong, S., Hoelzemann, J. J., Ito, A., Marelli, L., Penner, J. E., Putaud, J.-P., Textor, C., Schulz, M., van der Werf, G. R., and Wilson, J.: Emissions of primary aerosol and precursor gases in the years 2000 and 1750 prescribed data-sets for AeroCom, *Atmos. Chem. Phys.*, 6, 4321–4344, doi:10.5194/acp-6-4321-2006, 2006.

15 Edwards, D. P.: GENLN2: A general line-by-line atmospheric transmittance and radiance model. Technical Report NCAR/TN-367+STR, NCAR, P.O. Box 3000, Boulder, Colorado, 80307–3000, 147 pp., 1992. 32654, 32661, 32664

Edwards, J. M. and Slingo, A.: Studies with a flexible new radiation code. I: Choosing a configuration for a large-scale model, *Q. J. Roy. Meteor. Soc.*, 122, 689–719, 1996. 32654, 32658, 20 32681, 32686

Fischer, J. and Grassl, H.: Radiative transfer in an atmosphere-ocean system: an azimuthally dependent matrix-operator approach. *Appl Opt*, 23, 1031, 1984. 32662

Fell, F. and Fischer, J.: Numerical simulation of the light field in the atmosphere–ocean system using the matrix-operator method, *J. Quant. Spectrosc. Radiat. Transf.*, 69, 351–388, 2001. 25 32662

Forster, P., Ramaswamy, V., Artaxo, P., Bernsten, T., Betts, R., Fahey, D. W., Haywood, J., Lowe, J., Myhre, G., Nganga, J., Prinn, R., Raga, G., Schulz, M., and Dorland, R. V.: Climate Change 2007: The Physical Science Basis: Contribution of Working Group I to the Fourth Assessment Report of the Intergovernmental Panel on Climate Change, Chap. Changes in Atmospheric Constituents and in Radiative Forcing, Cambridge University Press, Cambridge, UK and New York, NY, USA, 2007. 32634

30 Forster, P. M., V. I. Fomichev, E. Rozanov, C. Cagnazzo, A. I. Jonsson, U. Langematz, B. Fomin, M. J. Iacono, B. Mayer, E. Mlawer, G. Myhre, R. W. Portmann, H. Akiyoshi, V. Falaleeva, N.

AeroCom Radiative Transfer Experiment

C. A. Randles et al.

Title Page

Abstract

Introduction

Conclusions

References

Tables

Figures

◀

▶

◀

▶

Back

Close

Full Screen / Esc

Printer-friendly Version

Interactive Discussion



Gillett, A. Karpechko, J. Li, P. Lemennais, O. Morgenstern, S. Oberländer, M. Sigmund, and K. Shibata: Evaluation of radiation scheme performance within chemistry climate models, *J. Geophys. Res.*, 116, D10302, doi:10.1029/2010JD015361, 2011. 32661

Fouquart, Y. and Bonnel, B.: Computations of solar heating of the Earth's atmosphere: A new parameterization, *Beitr. Phys. Atmos.*, 53, 35–62, 1980. 32657

Fouquart, Y., Bonnel, B., and Ramaswamy, V.: Intercomparing shortwave radiation codes for climate studies, *J. Geophys. Res.*, 96, 8955–8968, 1991. 32636

Freidenreich, S. M. and Ramaswamy, V.: A new multiple-band solar radiative parameterization for general circulation models. *J. Geophys. Res.*, 104, 31389–31409, 1999. 32656

Fu, Q. and Liou, K. N.: On the correlated k-distribution method for radiative transfer in nonhomogeneous atmospheres. *J. Atmos. Sci.*, 49, 2139–2156, 1992. 32637, 32656, 32660

Fu, Q. and Liou, K. N.: Parameterization of the radiative properties of cirrus clouds, *J. Atmos. Sci.*, 50, 2008–2025, 1993. 32656, 32660

Gu, Y., Farrara, J., Liou, K. N., and Mechoso, C. R.: Parameterization of cloud-radiation processes in the UCLA general circulation model, *J. Climate*, 16, 3357–3370, 2003.

Gu, Y., Liou, K. N., Xue, Y., Mechoso, C. R., Li, W., and Luo, Y.: Climatic effects of different aerosol types in China simulated by the University of California, Los Angeles atmospheric general circulation model, *J. Geophys. Res.*, 111, D15201, doi:10.1029/2005JD006312, 2006.

Gu, Y., Liou, K. N., Chen, W., and Liao, H.: Direct climate effect of black carbon in China and its impact on dust storms, *J. Geophys. Res.*, 115, D00K14, doi:10.1029/2009JD01342, 2010. 32656

Gu, Y., Liou, K. N., Ou, S. C., and Fovell, R.: Cirrus cloud simulations using WRF with improved radiation parameterization and increased vertical resolution. *J. Geophys. Res.*, 116, D06119, doi:10.1029/2010JD014574, 2011. 32656

Gueymard, C. A.: The sun's total and spectral irradiance for solar energy applications and solar radiation models, *Solar Energy*, 76, 423–453, 2004. 32659, 32662

Grassl, H.: Strahlung in getrübten Atmosphären und in Wolken, *Contr. Atmos. Phys.*, 49, 225–236, 1978. 32663

Halthore, R. N., D. Crisp, S. E. Schwartz, G. P. Anderson, A. Berk, B. Bonnel, O. Boucher, F.-L. Chang, M.-D. Chou, E. E. Clothiaux, P. Dubuisson, B. Fomin, Y. Fouquart, S. Freidenreich, C. Gautier, S. Kato, I. Laszlo, Z. Li, J. H. Mather, A. Plana-Fattori, V. Ramaswamy, P. Ricchiazzi, Y. Shiren, A. Trishchenko, and W. Wiscombe: Intercomparison of shortwave radiative trans-

AeroCom Radiative Transfer Experiment

C. A. Randles et al.

Title Page

Abstract

Introduction

Conclusions

References

Tables

Figures

◀

▶

◀

▶

Back

Close

Full Screen / Esc

Printer-friendly Version

Interactive Discussion



fer codes and measurements, *J. Geophys. Res.*, 110, D11206, doi:10.1029/2004JD005293, 2005. 32634, 32636, 32638, 32639, 32642, 32643, 32644, 32646

Hatzianastassiou, N., Matsoukas, C., Hatzidimitriou, D., Pavlakis, C., Drakakis, M., and Vardavas, I.: Ten-year radiation budget of the Earth: 1984–1993, *Int. J. Climatology*, 24, 1785–1802, doi:10.1002/joc.1110, 2004b. 32660

Hatzianastassiou, N., Matsoukas, C., Drakakis, E., Stackhouse, P. W., Koepke, P., Fotiadi, A., Pavlakis, K. G., and Vardavas, I.: The direct effect of aerosols on solar radiation based on satellite observations, reanalysis datasets, and spectral aerosol optical properties from Global Aerosol Data Set (GADS), 7, 2585–2599, 2007a. 32660

Hatzianastassiou, N., Matsoukas, C., Fotiadi, A., P. W. Stackhouse Jr., Koepke, P., Pavlakis, K. G., and Vardavas, I.: Modelling the direct effect of aerosols in the solar near-infrared on a planetary scale, *Atmos. Chem. Phys.*, 7, 3211–3229, doi:10.5194/acp-7-3211-2007, 2007b. 32660

Hess, M., Koepke, P., and Schult, I.: Optical Properties of Aerosols and Clouds: The Software Package OPAC, *B. Am Meteor. Soc.* 79, 831–844, 1998.

Howard, J. N., King, J. I. F., and Gast, P. R.: Thermal radiation, in *Handbook of Geophysics*, 16, 16:1–16:32, Macmillan, Indianapolis, Indiana, 1961. 32661

Huneus, N., Schulz, M., Balkanski, Y., Griesfeller, J., Prospero, J., Kinne, S., Bauer, S., Boucher, O., Chin, M., Dentener, F., Diehl, T., Easter, R., Fillmore, D., Ghan, S., Ginoux, P., Grini, A., Horowitz, L., Koch, D., Krol, M. C., Landing, W., Liu, X., Mahowald, N., Miller, R., Morcrette, J.-J., Myhre, G., Penner, J., Perlwitz, J., Stier, P., Takemura, T., and Zender, C. S.: Global dust model intercomparison in AeroCom phase I, *Atmos. Chem. Phys.*, 11, 7781–7816, doi:10.5194/acp-11-7781-2011, 2011.

Iacono, M. J., Delamere, J. S., Mlawer, E. J., Shephard, M. W., Clough, S. A., and Collins, W. D.: Radiative forcing by long-lived greenhouse gases: Calculations with the AER radiative transfer models, *J. Geophys. Res.*, 113, D13103, doi:10.1029/2008JD009944, 2008. 32664

Joseph, J. H., Wiscombe, W. J., and Weinman, J. A.: The Delta-Eddington Approximation for Radiative Flux Transfer. *J. Atmos. Sci.*, 33, 2452–2459, 1976. 32637, 32660, 32665

JPL: Chemical Kinetics and Photochemical Data for Use in Atmospheric Studies, Evaluation Number 17, JPL Publication 10-6, 2011. 32666

Kato, S., Ackerman, T. P. and Mather, J. H. and Clothiaux, E. E.: The k-distribution method and correlated-k approximation for a shortwave radiative transfer model, *J. Quant. Spectrosc. Radiat. Transfer*, 62, 109–121, 1999. 32637, 32661

AeroCom Radiative Transfer Experiment

C. A. Randles et al.

[Title Page](#)[Abstract](#)[Introduction](#)[Conclusions](#)[References](#)[Tables](#)[Figures](#)[◀](#)[▶](#)[◀](#)[▶](#)[Back](#)[Close](#)[Full Screen / Esc](#)[Printer-friendly Version](#)[Interactive Discussion](#)

- Key, J. and Schweiger, A. J.: Tools for atmospheric radiative transfer: Streamer and FluxNet. *Comput Geosci*, 24, 443–451, doi:10.1016/S0098-3004(97)00130-1, 1998. 32667
- Kinne, S., Schulz, M., Textor, C., Guibert, S., Balkanski, Y., Bauer, S. E., Berntsen, T., Berglen, T. F., Boucher, O., Chin, M., Collins, W., Dentener, F., Diehl, T., Easter, R., Feichter, J., Fillmore, D., Ghan, S., Ginoux, P., Gong, S., Grini, A., Hendricks, J., Herzog, M., Horowitz, L., Isaksen, I., Iversen, T., Kirkevåg, A., Kloster, S., Koch, D., Kristjansson, J. E., Krol, M., Lauer, A., Lamarque, J. F., Lesins, G., Liu, X., Lohmann, U., Montanaro, V., Myhre, G., Penner, J., Pitari, G., Reddy, S., Seland, Ø., Stier, P., Takemura, T., and Tie, X.: An AeroCom initial assessment – optical properties in aerosol component modules of global models, *Atmos. Chem. Phys.*, 6, 1815–1834, doi:10.5194/acp-6-1815-2006, 2006. 32635
- Klocke, D., Pincus, R., and Quaas, J.: On constraining estimates of climate sensitivity with present day observations through model weighting, *J. Clim.*, 24, 6092–6099, doi:10.1175/2011JCLI4193.1, 2011. 32658
- Kneizys F. X., Shettle E. P., Abreu L. W., Chetwynd J. H., Anderson G. P., Gallery W. O., Selby J. E. A., and S. A. Clough: Report AFGL-TR-88-0177, Air Force Geophysics Laboratory, Hanscom AFB, Massachusetts, 1988. 32667
- Koch, D., Schulz, M., Kinne, S., McNaughton, C., Spackman, J. R., Balkanski, Y., Bauer, S., Berntsen, T., Bond, T. C., Boucher, O., Chin, M., Clarke, A., De Luca, N., Dentener, F., Diehl, T., Dubovik, O., Easter, R., Fahey, D. W., Feichter, J., Fillmore, D., Freitag, S., Ghan, S., Ginoux, P., Gong, S., Horowitz, L., Iversen, T., Kirkevåg, A., Klimont, Z., Kondo, Y., Krol, M., Liu, X., Miller, R., Montanaro, V., Moteki, N., Myhre, G., Penner, J. E., Perlwitz, J., Pitari, G., Reddy, S., Sahu, L., Sakamoto, H., Schuster, G., Schwarz, J. P., Seland, Ø., Stier, P., Takegawa, N., Takemura, T., Textor, C., van Aardenne, J. A., and Zhao, Y.: Evaluation of black carbon estimations in global aerosol models, *Atmos. Chem. Phys.*, 9, 9001–9026, doi:10.5194/acp-9-9001-2009, 2009. 32634
- Lacis, A. A. and Hansen, J. E.: Parameterization for absorption of solar-radiation in earths atmosphere, *J. Atmos. Sci.*, 31, 118–133, 1974. 32667, 32681, 32686
- Lacis A. A. and Oinas, V. A.: Description of the correlated k-distribution method, *J. Geophys. Res.*; 96, 9027–9064, 1991. 32637
- Lean, J., Rottman, G., Harder, J., and G. Kopp: SOURCE contributions to new understanding of global change and solar variability, *Solar Phys.*, 230, 27–53, 2005. 32661
- Lenoble, J.: Radiative Transfer in Scattering and Absorbing Atmospheres: Standard Computational Procedures, A. Deepak, Hampton, Va., 1985. 32652

AeroCom Radiative Transfer Experiment

C. A. Randles et al.

Title Page

Abstract

Introduction

Conclusions

References

Tables

Figures

◀

▶

◀

▶

Back

Close

Full Screen / Esc

Printer-friendly Version

Interactive Discussion



- Li, J. and Barker, H. W.: A radiation algorithm with Correlated-k Distribution. Part I: Local thermal equilibrium. *J. Atmos. Sci.*, 62, 286–309, 2005. 32655
- Li, J. and Shibata, K.: On the effective solar pathlength. *Notes and Correspondence*, 63, 1365–1373, 2006. 32655
- 5 Li, J., Dobbie, S., Risnen, P., and Min, Q.: Accounting for unresolved clouds in a 1-D solar radiative-transfer model. *Q. J. Roy. Meteorol. Soc.*, 131, 1607–1629, 2005. 32655
- Liang, X.-Z. and F. Zhang: Cloud-Aerosol-Radiation (CAR) Ensemble Modeling System. *J. Geophys. Res.*, submitted, 2012. 32642, 32653
- Liou, K.-N.: *Radiation and Cloud Processes in the Atmosphere*, Oxford Univ. Press, New York, USA, 1992. 32652
- 10 Liou, K. N., Gu, Y., Yue, Q., and McFarguhar, G.: On the correlation between ice water content and ice crystal size and its application to radiative transfer and general circulation models. *Geophys. Res. Lett.*, 35, L13805, doi:10.1029/2008GL033918, 2008. 32656
- Ma, Y. and R. T. Pinker.: Modeling shortwave radiative fluxes from satellites, *J. Geophys. Res.*, 117, D23202, doi:10.1029/2012JD018332, 2012.
- The HadGEM2 Development Team: G. M. Martin, Bellouin, N., Collins, W. J., Culverwell, I. D., Halloran, P. R., Hardiman, S. C., Hinton, T. J., Jones, C. D., McDonald, R. E., McLaren, A. J., O'Connor, F. M., Roberts, M. J., Rodriguez, J. M., Woodward, S., Best, M. J., Brooks, M. E., Brown, A. R., Butchart, N., Dearden, C., Derbyshire, S. H., Dharssi, I., Doutriaux-Boucher, M., Edwards, J. M., Falloon, P. D., Gedney, N., Gray, L. J., Hewitt, H. T., Hobson, M., Huddleston, M. R., Hughes, J., Ineson, S., Ingram, W. J., James, P. M., Johns, T. C., Johnson, C. E., Jones, A., Jones, C. P., Joshi, M. M., Keen, A. B., Liddicoat, S., Lock, A. P., Maidens, A. V., Manners, J. C., Milton, S. F., Rae, J. G. L., Ridley, J. K., Sellar, A., Senior, C. A., Totterdell, I. J., Verhoef, A., Vidale, P. L., and Wiltshire, A.: The HadGEM2 family of Met Office
- 20 Unified Model climate configurations, *Geosci. Model Dev.*, 4, 723–757, doi:10.5194/gmd-4-723-2011, 2011. 32665
- Mayer, B. and Kylling, A.: Technical note: The libRadtran software package for radiative transfer calculations – description and examples of use, *Atmos. Chem. Phys.*, 5, 1855–1877, doi:10.5194/acp-5-1855-2005, 2005. 32661, 32662
- 30 Meador, W. E. and Weaver, W. R.: Two-Stream Approximations to Radiative Transfer in Planetary Atmospheres: A Unified Description of Existing Methods and a New Improvement, *J. Atmos. Sci.*, 37, 630–643, 1980. 32663, 32665

**AeroCom Radiative
Transfer Experiment**

C. A. Randles et al.

Title Page

Abstract

Introduction

Conclusions

References

Tables

Figures

◀

▶

◀

▶

Back

Close

Full Screen / Esc

Printer-friendly Version

Interactive Discussion



- Minschwaner, K., Salawitch, R. J., and McElroy, M. B.: Absorption of Solar Radiation by O₂: Implications for O₃ and Lifetimes of N₂O, CFC13, and CF2Cl2, *J. Geophys. Res.*, 98, 10543–10561, doi:10.1029/93JD00223, 1993. 32666
- Molina, L. T. and Molina, M. J.: Absolute Absorption Cross Sections of Ozone in the 185- to 350-nm Wavelength Range, *J. Geophys. Res.*, 91, 501–514, 1986.
- Myhre, G., Samset, B. H., Schulz, M., Balkanski, Y., Bauer, S., Bernsten, T. K., Bian, H., Bellouin, N., Chin, M., Diehl, T., Easter, R. C., Feichter, J., Ghan, S. J., Hauglustaine, D., Iversen, T., Kinne, S., Kirkevåg, A., Lamarque, J.-F., Lin, G., Liu, X., Luo, G., Ma, X., Penner, J. E., Rasch, P. J., Seland, Ø., Skeie, R. B., Stier, P., Takemura, T., Tsigaridis, K., Wang, Z., Xu, L., Yu, H., Yu, F., Yoon, J.-H., Zhang, K., Zhang, H., and Zhou, C.: Radiative forcing of the direct aerosol effect from AeroCom Phase II simulations, *Atmos. Chem. Phys. Discuss.*, 12, 22355–22413, doi:10.5194/acpd-12-22355-2012, 2012. 32634, 32635, 32647, 32648, 32649, 32650, 32651, 32699
- Myhre, G., Jonson, J. E., Bartnicki, J., Stordal, F., and Shine, K. P.: Role of spatial and temporal variations in the computation of radiative forcing due to sulphate aerosols: A regional study, *Q. J. Roy. Meteorol. Soc.*, 128, 973–989, 2002. 32661, 32664
- Nakajima, T., Tsukamoto, M., Tsushima, Y., Numafuti, A., and Kimura, T.: Modeling of radiative process in an atmospheric general circulation model. *Appl. Opt.*, 39, 4869–4878, 2000. 32653
- Nemensure, S., Wagener, R., and Schwartz, S. E.: Direct shortwave forcing of climate by the anthropogenic sulfate aerosol: Sensitivity to particle size, composition, and relative humidity, *J. Geophys. Res.*, 100, 26105–26116. 32646
- Neubauer, D., Vrtala, A., Leitner, J. J., Firneis, M. G., and Hitzemberger, R.: Development of a model to compute the extension of life supporting zones for Earth-like exoplanets, *Orig. Life Evol. Biosph.* 41, 545–552. doi:10.1007/s11084-011-9259-9, 2011. 32667
- North, G. R., Cahalan, R. F., and Coakley Jr., J. A.: Energy balance climate models, *Rev. Geophys.*, 19, 91–121, 1981.
- Oreopoulos, L. and Barker, H. W.: Accounting for subgrid-scale cloud variability in a multi-layer 1-D solar radiative transfer algorithm, *Q. Roy. Meteor. Soc.*, 125, 301–330, 1999. 32665
- Oreopoulos, L., E. Mlawer, J. Delamere, T. Shippert, J. Cole, B. Fomin, M. Iacono, Z. Jin, J. Li, J. Manners, P. Räisänen, F. Rose, Y. Zhang, and M. J. Wilson: The Continual Inter-comparison of Radiation Codes: Results from Phase I, *J. Geophys. Res.*, 117, D06118, doi:10.1029/2011JD016821, 2012. 32634, 32644

AeroCom Radiative Transfer Experiment

C. A. Randles et al.

[Title Page](#)[Abstract](#)[Introduction](#)[Conclusions](#)[References](#)[Tables](#)[Figures](#)[◀](#)[▶](#)[◀](#)[▶](#)[Back](#)[Close](#)[Full Screen / Esc](#)[Printer-friendly Version](#)[Interactive Discussion](#)

Penndorf, R.: Tables of the refractive index for standard air and the Rayleigh scattering coefficients for the spectral region between 0.2 and 20.0 μm and their application to atmospheric optics, *J. Opt. Soc. Am.*, 47, 176–182, doi:10.1364/JOSA.47.000176, 1957.

Penner, J. E., Quaas, J., Storelvmo, T., Takemura, T., Boucher, O., Guo, H., Kirkeå, A., and Kristjansson, J. E.: Model intercomparison of indirect aerosol effects, *Atmos. Chem. Phys.*, 6, 3391–3405, doi:10.5194/acp-6-3391-2006, 2006.

Pinker, R. T., Zhang, B., and Dutton, E. G.: Do satellites detect trends in surface solar radiation? *Science*, 308, 5723, 850–854, 2005.

Plass, G., Kattawar, G., and Catchings, F.: Matrix-operator theory of radiative transfer. 1: Rayleigh scattering, *Appl. Opt.*, 12, 314–329, 1973. 32637, 32662, 32663

Ramaswamy, V. and Freidenreich, S. M.: A study of broad-band parameterizations of the solar radiative interactions with water-vapor and water drops, *J. Geophys. Res.*, 97, 11487–11512, 1992.

Rathke, C. and Fischer, J.: Retrieval of cloud microphysical properties from thermal infrared observations by a fast iterative radiance fitting method, *J. Atmos. Ocean Technol.*, 17, 1509–1524, 2000. 32662

Roeckner, E., Bäuml, G., Bonaventura, L., Brokopf, R., Esch, M., Giorgetta, M., Hagemann, S., Kirchner, I., Kornblüeh, L., Manzini, E., Rhodin, A., Schlese, U., Schulzweida, U., and Tompkins, A.: The atmospheric general circulation model ECHAM5. Part I: Model description, *Max Planck Institute for Meteorology Rep. 349*, 127 pp., 2003.

Rothman, L. S., R. R. Gamache, A. Barbe, A. Goldman, J. R. Gillis, L. R. Brown, R. A. Toth, J. M. Flaud, and C. Camypeyret: AFGL atmospheric absorption-line parameters compilation - 1982 edition, *Applied Optics*, 22, 15, 2247–2256, 1983.

Rothman, L. S., Gamache, R. R., Tipping, R. H., Rinsland, C. P., Smith, M. A. H., Benner, D. C., Devi, V. M., Flaud, J.-M., Camy-Peyret, C., and Perrin, A.: The HITRAN molecular database: Editions of 1991 and 1992, *J. Quant. Spectrosc. Radiat. Transfer*, 48, 469–507, 1992. 32656, 32664

Rothman, L. S., A. Barbe, D. C. Benner, L. R. Brown, C. Camy-Peyret, M. R. Carleer, K. Chance, C. Clerbaux, V. Dana, V. M. Devi, A. Fayt, J.-M. Flaud, R. R. Gamache, A. Goldman, D. Jacquemart, K. W. Jucks, W. J. Lafferty, J.-Y. Mandin, S. T. Massie, V. Nemtchinov, D. A. Newnham, A. Perrin, C. P. Rinsland, J. Schroeder, K. M. Smith, M. A. H. Smith, K. Tang, R. A. Toth, J. V. Auwera, P. Varanasi, and K. Yoshino: The HITRAN molecular spectroscopic

AeroCom Radiative Transfer Experiment

C. A. Randles et al.

Title Page

Abstract

Introduction

Conclusions

References

Tables

Figures

◀

▶

◀

▶

Back

Close

Full Screen / Esc

Printer-friendly Version

Interactive Discussion



database: Edition of 2000 including updates of 2001. *J. Quant. Spectrosc. Radiat. Transfer*, 82, 5–44, 2003. 32653, 32654, 32659

Rothman, L. S., et al.: HITRAN 2004 molecular spectroscopic database, *J. Quant. Spectrosc. Radiat. Transfer*, 96, 139–204, doi:10.1016/j.jqsrt.2004.10.008, 2005. 32664

5 Rothman, L. S., Gordon, I. E., Barbe, A., Benner, D. C., Bernath, P. F., Birk, M., Boudon, V., Brown, L. R., Campargue, A., Champion, J.-P., Chance, K., Coudert, L. H., Dana, V., Devi, V. M., Fally, S., Flaud, J.-M., Gamache, R. R., Goldman, A., Jacquemart, D., Kleiner, I., Lacombe, N., Lafferty, W. J., Mandin, J.-Y., Massie, S. T., Mikhailenko, S. N., Miller, C. E., Moazzen-Ahmadi, N., Naumenko, O. V., Nikitin, A. V., Orphal, J., Perevalov, V. I., Perrin, 10 A., Predoi-Cross, A., Rinsland, C. P., Rotger, M., Šimečková, M., Smith, M. A. H., Sung, K., Tashkun, S. A., Tennyson, J., Toth, R. A., Vandaele, A. C., and Vander Auwera, J.: The HITRAN 2008 molecular spectroscopic database, *J. Quant. Spectrosc. Radiat. Transfer*, 110, 533–572, 2009. 32661, 32662

Schulz, M., Textor, C., Kinne, S., Balkanski, Y., Bauer, S., Berntsen, T., Berglen, T., Boucher, 15 O., Dentener, F., Guibert, S., Isaksen, I. S. A., Iversen, T., Koch, D., Kirkevåg, A., Liu, X., Montanaro, V., Myhre, G., Penner, J. E., Pitari, G., Reddy, S., Seland, Ø., Stier, P., and Takemura, T.: Radiative forcing by aerosols as derived from the AeroCom present-day and pre-industrial simulations, *Atmos. Chem. Phys.*, 6, 5225–5246, doi:10.5194/acp-6-5225-2006, 2006. 32635

20 Schulz, M., Chin, M., and Kinne S.: The Aerosol Model Comparison Project, AeroCom, Phase II: Clearing Up Diversity, *IGAC Newsletter*, No 41, May 2009. 32635

Slingo, A. and Schrecker, H. M.: On the shortwave radiative properties of stratiform water clouds, *Q. J. Roy. Meteor. Soc.*, 108, 407–426, 1982. 32661

Solomon, S., Qin, D., Manning, M., Marquis, M., Averyt, K., Tignor, M., Miller, H., and Chen, Z.: 25 Technical summary, in *Climate Change 2007: The Physical Science Basis. Contribution of Working Group I to the Fourth Assessment Report of the Intergovernmental Panel on Climate Change*, edited by: Solomon, S., Qin, D., Manning, M., Marquis, M., Averyt, K., Tignor, M., Miller, H., and Chen, Z., 19–94, Cambridge Univ. Press, Cambridge, UK, 2007. 32640

30 Stamnes, K., Tsay, S. C., Wiscombe, W., and Jayaweera, K.: A numerically stable algorithm for discrete-ordinate-method radiative transfer in multiple scattering and emitting layered media. *Appl. Opt.*, 27, 2502–2509, 1988. 32637, 32654, 32661, 32663, 32664, 32667

Stevens, B., Giorgetta, M., Esch, M., Mauritsen, T., Crueger, T., Rast, S., Salzmann, M., Schmidt, H., Bader, J., Block, K., Brokopf, R., Fast, Kinne, S., Kornblueh, L., Lohmann,

AeroCom Radiative Transfer Experiment

C. A. Randles et al.

Title Page

Abstract

Introduction

Conclusions

References

Tables

Figures

◀

▶

◀

▶

Back

Close

Full Screen / Esc

Printer-friendly Version

Interactive Discussion



U., Pincus, R., Reichler, T., and Roeckner, E.: The atmospheric component of the MPI Earth System Model: ECHAM6, JAMES, submitted, 2012.

Stier, P., Schutgens, N. A. J., Bian, H., Boucher, O., Chin, M., Ghan, S., Huneeus, N., Kinne, S., Lin, G., Myhre, G., Penner, J. E., Randles, C., Samset, B., Schulz, M., Yu, H., and Zhou, C.: Host model uncertainties in aerosol radiative forcing estimates: results from the AeroCom prescribed intercomparison study, *Atmos. Chem. Phys. Discuss.*, 12, 25487–25549, doi:10.5194/acpd-12-25487-2012, 2012. 32635, 32640, 32648, 32649, 32651, 32699

Stokes, G. M. and Schwartz, S. E.: The Atmospheric Radiation Measurement (ARM) Program: Programmatic background and design of the cloud and Radiation Testbed, *B. Amer. Meteor. Soc.*, 75, 1201–1221, 1994. 32654

Sun, Z.: Development of the Sun-Edwards-Slingo Radiation Scheme (SES2). CAWCR Technical Report No. 009, Centre for Australian Weather and Climate Research, Australian Bureau of Meteorology, 94 pp., 2008. 32654

Sun, Z. and Rikus, L.: Improved application of exponential sum fitting transmissions to inhomogeneous atmosphere, *J. Geophys. Res.*, 104, 6291–6303, 1999. 32637, 32654

Tarasova, T. A. and Fomin, B. A.: Solar radiation absorption due to water vapor: Advanced broadband parameterizations, *J. Appl. Met.*, 39, 1947–1951, 2000. 32667

Textor, C., Schulz, M., Guibert, S., Kinne, S., Balkanski, Y., Bauer, S., Berntsen, T., Berglen, T., Boucher, O., Chin, M., Dentener, F., Diehl, T., Easter, R., Feichter, H., Fillmore, D., Ghan, S., Ginoux, P., Gong, S., Grini, A., Hendricks, J., Horowitz, L., Huang, P., Isaksen, I., Iversen, I., Kloster, S., Koch, D., Kirkevåg, A., Kristjansson, J. E., Krol, M., Lauer, A., Lamarque, J. F., Liu, X., Montanaro, V., Myhre, G., Penner, J., Pitari, G., Reddy, S., Seland, Ø., Stier, P., Takemura, T., and Tie, X.: Analysis and quantification of the diversities of aerosol life cycles within AeroCom, *Atmos. Chem. Phys.*, 6, 1777–1813, doi:10.5194/acp-6-1777-2006, 2006. 32634

Textor, C., Schulz, M., Guibert, S., Kinne, S., Balkanski, Y., Bauer, S., Berntsen, T., Berglen, T., Boucher, O., Chin, M., Dentener, F., Diehl, T., Feichter, J., Fillmore, D., Ginoux, P., Gong, S., Grini, A., Hendricks, J., Horowitz, L., Huang, P., Isaksen, I. S. A., Iversen, T., Kloster, S., Koch, D., Kirkevåg, A., Kristjansson, J. E., Krol, M., Lauer, A., Lamarque, J. F., Liu, X., Montanaro, V., Myhre, G., Penner, J. E., Pitari, G., Reddy, M. S., Seland, Ø., Stier, P., Takemura, T., and Tie, X.: The effect of harmonized emissions on aerosol properties in global models – an AeroCom experiment, *Atmos. Chem. Phys.*, 7, 4489–4501, doi:10.5194/acp-7-4489-2007, 2007. 32634

AeroCom Radiative Transfer Experiment

C. A. Randles et al.

Title Page

Abstract

Introduction

Conclusions

References

Tables

Figures

◀

▶

◀

▶

Back

Close

Full Screen / Esc

Printer-friendly Version

Interactive Discussion



- Tomassini, L., Geoffroy, O., Dufresne, J.-L., Idelkadi, A., Cagnazzo, C., Block, K., Mauritsen, T., Giorgetta, M., and Quaas, J.: The respective roles of surface temperature driven feedbacks and tropospheric adjustment to CO₂ in CMIP5 transient climate simulations, *Clim. Dynam.*, submitted, 2012.
- 5 Toon, O. B., McKay, C. P., Ackerman, T. P., and Santhanam, K.: Rapid Calculation of Radiative Heating Rates and Photodissociation Rates in Inhomogeneous Multiple Scattering Atmospheres, *J. Geophys. Res.*, 94, 16287–16301, doi:10.1029/JD094iD13p16287, 1989. 32666
- van de Hulst, H. C.: *Multiple Light Scattering: Tables, Formulas, and Applications*, vol. 1, Elsevier, New York, 1980. 32652
- 10 Vardavas, I. M. and Taylor, F. W.: *Radiation and Climate: Atmospheric energy budget from satellite remote sensing*, International Series of Monographs on Physics, 138, Oxford University Press, Oxford, UK, 2011. 32660
- Vigroux, E.: Contribution à l'étude expérimentale de l'absorption de l'ozone, *Ann. Phys.*, 8, 709–762, 1953. 32663
- 15 Voigt, S., Orphal, J., Bogumil, K., and Burrows, J. P.: The temperature dependence (203–293 K) of the absorption cross sections of O₃ in the 230–850 nm region measured by Fourier-transform spectroscopy, *J. Photoc. Photobiol.*, 143, 1–9, 2001.
- Walters, D. N., Best, M. J., Bushell, A. C., Copsey, D., Edwards, J. M., Falloon, P. D., Harris, C. M., Lock, A. P., Manners, J. C., Morcrette, C. J., Roberts, M. J., Stratton, R. A., Webster, S., Wilkinson, J. M., Willett, M. R., Boutle, I. A., Earnshaw, P. D., Hill, P. G., MacLachlan, C., Martin, G. M., Moufouma-Okia, W., Palmer, M. D., Petch, J. C., Rooney, G. G., Scaife, A. A., and Williams, K. D.: The Met Office Unified Model Global Atmosphere 3.0/3.1 and JULES Global Land 3.0/3.1 configurations, *Geosci. Model Dev.*, 4, 919–941, doi:10.5194/gmd-4-919-2011, 2011. 32658
- 20 Wang, H. and R. T. Pinker: Shortwave radiative fluxes from MODIS: Model development and implementation, *J. Geophys. Res.*, 114, D20201, doi:10.1029/2008JD010442, 2009. 32667
- Wei Xiaodong and Zhang Hua: Analysis of optical properties of nonspherical dust aerosols, *Acta Optica Sinica*, 31, 0501002-1, 2011. 32653
- Wiscombe, W. J. and Evans, J. W.: Exponential-sum fitting of radiative transmission functions, *J. Comput. Phys.*, 24, 416–444, 1977. 32637, 32654, 32664, 32667
- 30 WMO: Global ozone research and monitoring project. Report 16, Atmospheric Ozone. WMO, Geneva, Switzerland, 1985. 32664

AeroCom Radiative Transfer Experiment

C. A. Randles et al.

[Title Page](#)[Abstract](#)[Introduction](#)[Conclusions](#)[References](#)[Tables](#)[Figures](#)[I◀](#)[▶I](#)[◀](#)[▶](#)[Back](#)[Close](#)[Full Screen / Esc](#)[Printer-friendly Version](#)[Interactive Discussion](#)

- Zdunkowski, W. G., Welch, R. M., and Korb, G.: An investigation of the structure of typical two-stream methods for the calculation of solar fluxes and heating rates in clouds, *Beiträge Phys. Atmosph.*, 53, 147–166, 1980. 32645, 32658
- 5 Zhang, H., Nakajima, T., Shi G. Y., Suzuki, T., and Imasu, R.: An optimal approach to overlapping bands with correlated-k distribution method and its application to radiative transfer calculations. *J. Geophys. Res.*, 108, 4641, doi:10.1029/2002JD003358, 2003. 32652, 32653
- Zhang, F., Zeng, Q. C., Gu, Y., and Liou, K. N.: Parameterization of the absorption of the H₂O continuum, CO₂, O₂, and other trace gases in the Fu-Liou radiation program, *Adv. Atmos. Sci.*, 22, 545–558, 2005. 32656
- 10 Zhang, H., Shi, G. Y., Nakajima., T., and Suzuki., T.: The effects of the choice of the k-interval number on radiative calculations, *J. Quant. Spectrosc. Radiat. Transfer*, 98, 31–43, 2006a. 32652
- Zhang, H., Suzuki, T., Nakajima, T., Shi, G. Y., Zhang, X. Y. and Liu, Y.: The effects of band division on radiative calculations. *Opt. Eng.*, 45, 016002, doi:10.1117/1.2160521, 2006b. 32652
- 15 Zhang, H., Shen, Z., Wei, X., Zhang, M., and Li, Z.: Comparison of optical properties of nitrate and sulfate aerosol and the direct radiative forcing due to nitrate in China, *Atmos. Res.*, 113, 113–125, 2012. 32653
- Zhang, F., X.-Z.Liang, Q.C.Zeng,Y.Gu, and S.J.Su: Cloud-Aerosol-Radiation (CAR) Ensemble Modeling System: Overall accuracy and efficiency. *Adv. Atmos. Sci.*, doi:10.1007/s00376-012-2171-z, 2013.
- 20 32642, 32653

Table 1. Models, investigators, and description^a

Model	Name	Investigator(s)	Description ^{b,c}
1	GENLN2-DISORT	Myhre	16-streams DISORT, LBL (HITRAN2008) 0.02 cm ⁻² resolution, 0.2-5.0 μm, 1-km (AFGL)
2	RFM DISORT (RFMD)	Highwood, Ryder, Harris	4-streams DISORT (HITRAN 2004), LBL 1 cm ⁻¹ resolution, 0.2–10 μm, 73 pressure (AGFL)
3	Oslo-DISORT	Myhre	8-stream DISORT, ESFT (HITRAN92 + GENLN2 for H ₂ O), 4 (2/1), 0.3-4.0 μm, 1-km (AFGL)
4	Oslo-2Stream	Myhre	2-stream DISORT, ESFT (HITRAN92 + GENLN2 for H ₂ O), 4 (2/1), 0.3-4.0 μm, 1-km (AFGL)
5	UNIVIE-Streamer	Neubauer, Hitzengerger	8-stream DISORT, ESFT (LOTAN7 + LBLRTM), 24 (10/14), 0.2-5.0 μm, 1-km (AFGL)
6	FMI-libRadtran	Huttunen	8-stream DISORT2 δ-M scaling on, ck-D (HITRAN92), 32 (16/16), 0.24-4.61 μm, 1-km (AFGL)
7	LMU-libRadtran	Mayer	6-stream DISORT2, ck-D (HITRAN92), 32 (16/16), 0.2401-4.6057 μm, 1-km (AFGL)
8	GSFC-FL	Yu	4-stream δ-Ed, ck-D (HITRAN82), 15 (10/5), 0.2-4.0 μm, 1-km < 25 km, 2-km 26-120 km
9	CAR-FLG	F. Zhang	4-stream δ-Ed, ck-D (1982AGFL + HITRAN2k), 6 (1/5), 0.2004.0 μm, 1-km (AFGL)
10	LaRC-FL	Rose, Kato	2-stream δ-Ed, ck-D (HITRAN2k), 18 (10/8), 0.17-4.0 μm, 32-layers
11	CAR-RRTMG	F. Zhang	2-stream δ-Ed, ck-D (LBLRTM), 14 (5/9), 0.2-12.196 μm, 1-km (AFGL)
12	RRTMG-SW	Oreopoulos, Lee	2-stream δ-Ed, ck-D (LBLRTM), 14 (4-5/10-9), 0.2-12 μm, 534 layers, 1-km AFGL
13	LMU-2stream	Mayer	2-stream δ-Ed, ck-D (HITRAN92), 32 (16/16), 0.2401-4.6057 μm, 1-km (AFGL)
14	MPI-2stream	Kinne	2-stream δ-Ed, ck-D (LOWTRAN5+Vigroux), 8 (4/4), μm, 20 levels
15	CAR-GSFC	F. Zhang	2-stream δ-Ed+adding (CS), ck-D (HITRAN96), 11 (8/3), 0.175-10 μm, 1-km (AFGL)
16	BCC-RAD	H. Zhang, P. Lu	2-stream δ-Ed (ES96), ck-D (HITRAN2k), 9 (7/2), 0.2-3.73 μm, 1-km (AFGL)
17	CAR-CCOMA	F. Zhang	δ-Ed+adding, ck-D (HITRAN96), 4 (9-sub/3), 0.2-4.0 μm, 1-km (AFGL)
18	ECHAM5.5	Quaas, Kinne, Stier	2-stream δ-Ed, Padé approx., 6 (3/3), 0.185-4.0 μm, 1-km (AFGL)
19	UMD-SRB	Ma, Pinker	2-stream δ-Ed, k-distribution for H ₂ O and Laci and Hansen (1974) for O ₃ (HITRAN-96), 7 (4/3), 0.2-4.0 μm, 31 (Clear-Sky) otherwise variable
20	ES96-6	Highwood, Ryder, Harris	2-stream PIFM, ck-D (H ₂ O: HITRAN 2003, O ₃ :HITRAN92), 6 (2/3), 0.2-10 μm, 73 pressure (AGFL)
21	ES96-220	Highwood, Ryder, Harris	2-stream PIFM, ck-D (H ₂ O: HITRAN 2003, O ₃ :HITRAN92), 220 (118/102), 0.2-10 μm, 73 pressure (AGFL)
22	ES96-6-D	Highwood, Ryder, Harris	2-stream PIFM with δ-scaling, ck-D (H ₂ O: HITRAN 2003, O ₃ :HITRAN92), 6 (2/3), 0.2-10 μm, 73 pressure (AGFL)
23	ES96-220-D	Highwood, Ryder, Harris	2-stream PIFM with δ-scaling, ck-D (H ₂ O: HITRAN 2003, O ₃ :HITRAN92) 220 (118/102), 0.2-10 μm, 73 pressure (AGFL)
24	UKMO-HadGEM2	Rumbold	2-stream PIFM with δ-scaling (ES96), ck-D (H ₂ O: HITRAN 2003, O ₃ :HITRAN92), 6 (2/3), 0.2-10 μm, 73 pressure (AGFL)
25	CAR-CAWCR	F. Zhang	2-stream δ-Ed (SES), ESFT (GENLN2), 9 (4/5) 0.2-5.0 μm, 1-km (AFGL)
26	CAR-CAM	F. Zhang	2-stream δ-Ed, ESFT (HITRAN2k), 19 (8/11), 0.2-5.0 μm, 1-km (AFGL)
27	ULAQ	Pitari, Di Genova	2-stream δ-Ed, ESFT (MPI-MAINZ + HITRAN92 for H ₂ O), 235 (150/85), 0.1216-7 μm, 570 m
28	FORTH	Vardavas, Hatzianastassiou Matsoukas	2-stream δ-Ed, ESFT, 128 (115/13), 0.2-9.52 μm, 100 layers
29	CAR-GFDL	F. Zhang	δ-Ed+adding, ESFT (HITRAN92), 18 (13/5) 0.173-20 μm, 1-km (AFGL)
30	MPI-MOM	Kinne	10-streams Matrix-Operator adding-doubling, ck-D (LOWTRAN5+Vigroux), 8 (4/4), μm, 20 levels
31	MOMO	Doppler, Fischer	Matrix-Operator adding-doubling, non-correlated k (HITRAN-2008), 97 (67/30), 0.2-100 μm, 1-km < 26 km, 2-km 26-120 km

^a See Appendix A for further model details. Appendix Table A1 provides additional information on gaseous transmission.

^b Format: #-streams and multiple-scattering scheme, gaseous transmittance scheme (transmission database), total # bands (# UV-Vis/# Near-IR), full λ-range [μm], vertical resolution

^c Abbreviations: RT = radiative transfer, LBL = line-by-line, DISORT = discrete-ordinate method, PIFM = Practical Improved Flux Method, Ed = Eddington, δ-Ed = delta Eddington, ES96 = Edwards and Slingo (1996), SES = Sun-Edwards-Slingo, CS = Chou and Suarez, FL = Fu-Liou, FLG = Fu-Liou-Gu, ESFT = exponential sum fit transmission, ck-D = correlated k-distribution, AFGL = Air Force Geophysical Laboratory vertical resolution

Title Page

Abstract Introduction

Conclusions References

Tables Figures

◀ ▶

◀ ▶

Back Close

Full Screen / Esc

Printer-friendly Version

Interactive Discussion



AeroCom Radiative Transfer Experiment

C. A. Randles et al.

Table 2. Protocol summary.

Experiment	Case 1	Case 2a	Case 2b
Aerosol	None (Rayleigh)	Fixed	Fixed
AOD (0.55 μm)	0	0.2	0.2
Ångström Parameter	Spectral dependence of AOD: $\text{AOD} = \exp(-1.0 \times \ln(\lambda/0.55) + \ln(0.2))$		
Asymmetry (g) Parameter ^a	N/A	0.7	0.7
SSA ^a	N/A	1.0	0.8
Surface Albedo ^a	0.2, globally, spectrally uniform		
Atmosphere ^b	AFGL “Tropical” (TROP) and “Sub-Arctic Winter” (SAW) (O ₃ and H ₂ O profiles w/1-km resolution)		
Clouds	NONE		
Solar Zenith Angle	30°, 75° for each atmosphere		

^a Solar-spectrally invariant.

^b TROP has higher humidity (H₂O mixing ration) and ozone (see Fig. 1).

Title Page

Abstract

Introduction

Conclusions

References

Tables

Figures

◀

▶

◀

▶

Back

Close

Full Screen / Esc

Printer-friendly Version

Interactive Discussion



Table 3. Case 1: Summary of Statistics for the Rayleigh Atmosphere^{a,b,c}

	SAW		TROP	
	30° SZA	75° SZA	30° SZA	75° SZA
Direct Broadband Downwards Flux at Surface				
LBL Avg	942.4	216.2	844.5	179.6
LBL RSD	0.8%	1.1%	1.1%	3.9%
Model Avg.	946.8	218.6	856.3	186.3
Avg. Bias	0.5%	1.1%	1.4%	3.7%
Model RSD	0.6%	1.0%	0.9%	2.1%
Diffuse Broadband Downwards Flux at Surface				
LBL Avg	64.4	37.2	64.0	36.8
LBL RSD	0.9%	1.5%	0.4%	0.5%
Model Avg.	63.4	38.0	63.3	37.9
Avg. Bias	-1.5%	2.1%	-1.1%	3.0%
Model RSD	7.0%	4.8%	6.8%	4.6%
Diffuse Broadband Flux Up at TOA				
LBL Avg	227.6	82.6	204.7	75.2
LBL RSD	1.3%	1.5%	1.3%	1.8%
Model Avg.	230.5	83.9	210.1	77.8
Avg. Bias	1.3%	1.6%	2.6%	3.5%
Model RSD	1.1%	1.9%	1.4%	2.1%
Total (Direct + Diffuse) UV-VIS Downwards Flux at Surface				
LBL Avg	489.2	115.8	489.1	115.7
LBL RSD	0.7%	1.3%	0.2%	0.3%
Model Avg.	489.3	115.7	490.3	117.5
Avg. Bias	0.0%	0.8%	0.3%	1.6%
Model RSD	1.1%	2.6%	1.0%	2.4%
Total near-IR Downwards Flux at Surface ^d				
LBL Avg	519.1	138.0	421.1	101.1
LBL RSD	0.8%	1.0%	2.3%	6.5%
Model Avg.	521.7	139.9	429.3	107.3
Avg. Bias	0.5%	1.4%	1.9%	6.1%
Model RSD	2.0%	2.5%	3.2%	3.6%
Broadband Absorptance ^e				
LBL Avg	0.134	0.201	0.221	0.307
LBL RSD	7.2%	8.4%	2.5%	5.1%
Model Avg.	0.126	0.186	0.204	0.276
Avg. Bias	-5.7%	-7.6%	-7.5%	-10.1%
Model RSD	4.7%	4.3%	3.8%	4.2%

^a Flux units $W m^{-2}$; scaled normalized results as described in the text and Fig. 2

Statistics for non-LBL models excludes Models 14, 22, 23, 25, 27, 30, and 31.

Models 22 and 23 are excluded because they are the same as Models 20 and 21 in the Rayleigh atmosphere.

Table A2 gives statistics excluding Models #22-23 only.

^b Line-by-line (LBL) benchmarks (Avg. of Models #1 and #2) and non-LBL model results.

^c Avg. Bias is expressed as a percentage of the LBL Avg. RSD = standard deviation as a percentage of mean.

^d Near-IR is calculated as a difference between broadband and UV-VIS.

^e Absorptance (Eq. 1) is derived assuming $F_{SFC}^{\uparrow} = \alpha F_{SFC}^{\downarrow}$ and surface albedo $\alpha = 0.2$.

Title Page

Abstract

Introduction

Conclusions

References

Tables

Figures

◀

▶

◀

▶

Back

Close

Full Screen / Esc

Printer-friendly Version

Interactive Discussion



AeroCom Radiative
Transfer Experiment

C. A. Randles et al.

Table 4. Statistics for diffuse flux down at surface with aerosols^a

ATM and SZA	Group 1 ^b Bias (RSD)	Group 2 ^c Bias (RSD)
Case 2a: Scattering Aerosols		
SAW 30	−0.9 % (3.5 %)	−36.6 % (5.8 %)
SAW 75	2.3 % (5.2 %)	−30.4 % (3.7 %)
TROP 30	0.2 % (3.7 %)	−35.3 % (5.6 %)
TROP75	4.3 % (5.4 %)	−27.1 % (4.4 %)
Case 2b: Absorbing Aerosols		
SAW 30	−0.3 % (3.6 %)	−33.8 % (4.4 %)
SAW 75	3.4 % (5.5 %)	−26.5 % (2.6 %)
TROP 30	1.0 % (3.9 %)	−32.4 % (4.4 %)
TROP 75	5.2 % (5.8 %)	−23.1 % (2.8 %)

^a Bias = $100 \times \frac{\mu_{\text{Group}} - \mu_{\text{LBL}}}{\mu_{\text{LBL}}}$, RSD = $100 \times \left| \frac{\sigma_{\text{Group}}}{\mu_{\text{Group}}} \right|$, μ = mean,

σ = standard deviation.

^b Group 1: Model # 3–14, 19–21, and 30–31.

^c Group 2: Model # 15–18 and 22–29.

Title Page

Abstract

Introduction

Conclusions

References

Tables

Figures

I◀

▶I

◀

▶

Back

Close

Full Screen / Esc

Printer-friendly Version

Interactive Discussion



AeroCom Radiative
Transfer Experiment

C. A. Randles et al.

Title Page

Abstract

Introduction

Conclusions

References

Tables

Figures

◀

▶

◀

▶

Back

Close

Full Screen / Esc

Printer-friendly Version

Interactive Discussion

**Table 5.** Summary of statistics for aerosol radiative forcing^{a, b, c, d}.

	Case 2a: Scattering Aerosols		Case 2b: Absorbing Aerosols	
	TOA RF	SFC RF	TOA RF	SFC RF
Sub-Arctic Winter 30° SZA				
LBL Avg.	−8.6	−9.7	11.6	−42.1
LBL RSD	3.4%	4.2%	0.7%	1.4%
Model Avg.	−10.2 (−10.6)	−11.0 (−11.2)	9.9 (9.4)	−41.8 (−41.6)
Avg. Bias	18.9% (23.2%)	13.0% (15.9%)	−14.2% (−18.5%)	−0.7% (−1.2%)
Model RSD	14.7% (14.3%)	13.3% (13.8%)	14.3% (12.9%)	4.1% (4.3%)
Sub-Arctic Winter 75° SZA				
LBL Avg.	−20.3	−21.5	−7.2	−37.8
LBL RSD	3.2%	3.8%	0.7%	2.9%
Model Avg.	−18.2 (−17.4)	−18.6 (−17.5)	−6.1 (−5.7)	−34.7 (−33.5)
Avg. Bias	−10.3% (−14.2%)	−13.8% (−18.7%)	−15.0% (−20.1%)	−8.1% (−11.2%)
Model RSD	9.6% (5.4%)	11.8% (5.9%)	12.6% (6.3%)	7.3% (4.2%)
Tropics 30° SZA				
LBL Avg.	−8.2	−10.0	10.3	−40.6
LBL RSD	0.7%	5.1%	2.0%	0.5%
Model Avg.	−9.8 (−10.2)	−10.9 (−11.0)	9.0 (8.7)	−40.4 (−40.1)
Avg. Bias	19.2% (23.3%)	8.3% (10.1%)	−12.0% (−15.9%)	−0.6% (−1.2%)
Model RSD	14.5% (14.2%)	12.2% (13.3%)	15.2% (15.1%)	4.0% (4.2%)
Tropics 75° SZA				
LBL Avg.	−18.0	−18.9	−6.5	−33.6
LBL RSD	1.8%	0.1%	5.8%	0.8%
Model Avg.	−16.7 (−16.1)	−16.6 (−15.7)	−5.7 (−5.4)	−31.6 (−30.7)
Avg. Bias	−7.4% (−10.9%)	−12.3% (−17.0%)	−12.4% (−16.9%)	−5.8% (−8.6%)
Model RSD	8.9% (6.1%)	11.8% (7.5%)	11.6% (7.1%)	8.3% (7.3%)

^a Forcing units $W m^{-2}$ calculated as in Eq. 2. We exclude Model # 20 and 21 as described in the text.

In parenthesis, we also exclude the multi-stream models (Models # 3 and 5–9) that agree well with LBL results.

^b Line-by-line (LBL) benchmarks (Avg. of Models #1 and #2) and non-LBL model results.

^c Avg. Bias is expressed as a percentage of the LBL Avg. Positive values imply that models overestimate radiative cooling or radiative warming. RSD = standard deviation as a percentage of mean.

^d Unless given, assumed $F_{SFC}^{\uparrow} = \alpha F_{TOA}^{\downarrow}$ and $\alpha = 0.2$ to calculate SFC RF.

Table A1. Gaseous Transmission Schemes: #*k*- or ESFT terms for ozone and water vapor.^a

Model #	Model Name	Type	# O ₃	# H ₂ O
1	GENLN2-DISORT	LBL	–	–
2	RFM DISORT (RFMD)	LBL	–	–
3	Oslo-DISORT	ESFT	2	2-3
4	Oslo-2Stream	ESFT	2	2-3
5	UNIVIE-Streamer	ESFT	0-30 terms/band	0-30 terms/band
6	FMI-libRadtran	<i>ck</i> -D	123	30
7	LMU-libRadtran	<i>ck</i> -D	123	30
8	GSFC-FL	<i>ck</i> -D	10	54
9	LaRC-FL	<i>ck</i> -D	10	60
10	CAR-FLG	<i>ck</i> -D	10	44
11	CAR-RRTMG	<i>ck</i> -D	28	92
12	RRTMG-SW	<i>ck</i> -D	28	92
13	LMU-2stream	<i>ck</i> -D	123	30
14	MPI-2stream	<i>ck</i> -D	9	41
15	CAR-GSFC	<i>ck</i> -D	8	31
16	BCC-RAD	<i>ck</i> -D	15	13
17	CAR-CCCMA	<i>ck</i> -D	9	23
18	ECHAM5.5	Padé approximation	1	1
19	UMD-SRB	<i>k</i> -distribution for H ₂ O Lacis and Hansen (1974) for O ₃	–	40
20	ES96-6	<i>ck</i> -D	6	15
21	ES96-220	<i>ck</i> -D	0-24/band	0-25/band
22	ES96-6-D	<i>ck</i> -D	6	15
23	ES96-220-D	<i>ck</i> -D	0-24/band	0-25/band
24	UKMO-HadGEM2	<i>ck</i> -D	6	15
25	CAR-CAWCR	ESFT	8	13
26	CAR-CAM	ESFT	7	7
27	ULAQ	ESFT	150	85
28	FORTH	ESFT	high spectral resolution for O ₃ photolysis rates	67
29	CAR-GFDL	ESFT	14	25
30	MPI-MOM	<i>ck</i> -D	9	41
31	MOMO	non-correlated <i>k</i>	120	3000

^aAbbreviations: RT = radiative transfer, LBL = line-by-line, DISORT = discrete-ordinate method, PIFM = Practical Improved Flux Method, Ed = Eddington, δ -Ed = delta Eddington, ES96 = Edwards and Slingo (1996), SES = Sun-Edwards-Slingo, CS = Chou and Suarez, FL = Fu-Liou, FLG = Fu-Liou-Gu, ESFT = exponential sum fit transmission, *ck*-D = correlated *k*-distribution, AFGL = Air Force Geophysical Laboratory vertical resolution

AeroCom Radiative Transfer Experiment

C. A. Randles et al.

Title Page

Abstract

Introduction

Conclusions

References

Tables

Figures

◀

▶

◀

▶

Back

Close

Full Screen / Esc

Printer-friendly Version

Interactive Discussion



Table A2. Case 1: Summary of Statistics for the Rayleigh Atmosphere (excluding only Models #22–23)^{a, b, c}.

	SAW		TROP	
	30° SZA	75° SZA	30° SZA	75° SZA
Direct Broadband Downwards Flux at Surface				
LBL Avg	942.4	216.2	844.5	179.6
LBL RSD	0.8%	1.1%	1.1%	3.9%
Model Avg.	947.4	218.8	858.1	186.9
Avg. Bias	0.5%	1.2%	1.6%	4.0%
Model RSD	0.8%	2.6%	1.5%	4.6%
Diffuse Broadband Downwards Flux at Surface				
LBL Avg	64.4	37.2	64.0	36.8
LBL RSD	0.9%	1.5%	0.4%	0.5%
Model Avg.	63.6	37.8	64.2	38.0
Avg. Bias	-1.2%	1.6%	0.3%	3.3%
Model RSD	6.9%	4.7%	7.3%	4.3%
Diffuse Broadband Flux Up at TOA				
LBL Avg	227.6	82.6	204.7	75.2
LBL RSD	1.3%	1.5%	1.3%	1.8%
Model Avg.	230.8	84.0	211.4	78.4
Avg. Bias	1.4%	1.7%	3.3%	4.2%
Model RSD	1.1%	1.8%	2.5%	3.2%
Total (Direct + Diffuse) UV-VIS Downwards Flux Down at Surface				
LBL Avg	489.2	115.8	489.1	115.7
LBL RSD	0.7%	1.3%	0.2%	0.3%
Model Avg.	489.1	116.7	490.1	117.4
Avg. Bias	0.0%	0.8%	0.2%	1.5%
Model RSD	1.1%	2.6%	1.0%	2.4%
Total near-IR Downwards Flux at Surface ^d				
LBL Avg	519.1	138.0	421.1	101.1
LBL RSD	0.8%	1.0%	2.3%	6.5%
Model Avg.	522.9	139.9	432.6	108.2
Avg. Bias	0.7%	1.4%	2.7%	7.0%
Model RSD	1.9%	3.9%	3.8%	7.5%
Broadband Absorptance ^e				
LBL Avg	0.134	0.201	0.221	0.307
LBL RSD	7.2%	6.4%	2.5%	5.1%
Model Avg.	0.126	0.186	0.201	0.273
Avg. Bias	-6.1%	-7.6%	-8.8%	-11.1%
Model RSD	4.9%	7.6%	6.2%	8.9%

^a Flux units $W m^{-2}$; scaled normalized results as described in the text and Fig. 2. Only Models 22 and 23 are excluded because they are the same as Models 20 and 21 in the Rayleigh atmosphere.

^b Line-by-line (LBL) benchmarks (Avg. of Models #1 and #2) and non-LBL model results.

^c Avg. Bias is expressed as a percentage of the LBL Avg. RSD = standard deviation as a percentage of mean.

^d Near-IR is calculated as a difference between broadband and UV-VIS

^e Absorptance (Eq. 1) is derived assuming $F_{SFC}^I = \alpha F_{SFC}$ and surface albedo $\alpha = 0.2$

Title Page

Abstract

Introduction

Conclusions

References

Tables

Figures

◀

▶

◀

▶

Back

Close

Full Screen / Esc

Printer-friendly Version

Interactive Discussion



AeroCom Radiative Transfer Experiment

C. A. Randles et al.

Title Page	
Abstract	Introduction
Conclusions	References
Tables	Figures
◀	▶
◀	▶
Back	Close
Full Screen / Esc	
Printer-friendly Version	
Interactive Discussion	

Table A3. Case 2a: Summary Statistics for Scattering Aerosols^{a,b,c}.

	SAW 30° SZA	SAW 75° SZA	TROP 30° SZA	TROP 75° SZA
Total (Direct + Diffuse) Broadband Flux Donwards at Surface				
LBL Avg.	994.6	226.5	896.0	192.8
LBL RSD	0.7 %	0.9 %	1.1 %	3.6 %
Model Avg.	996.9 (997.7)	232.6 (233.0)	906.1 (908.7)	202.7 (203.8)
Avg. Bias	0.2 % (0.3 %)	2.7 % (2.8 %)	1.1 % (1.4 %)	5.1 % (5.7 %)
Model RSD	0.8 % (0.9 %)	1.5 % (2.3 %)	1.0 % (1.6 %)	2.2 % (3.9 %)
Broadband Diffuse Flux Upwards at TOA				
LBL Avg.	236.3	102.9	212.9	93.2
LBL RSD	1.4 %	1.8 %	1.2 %	1.8 %
Model Avg.	240.2 (240.5)	102.8 (102.7)	219.3 (220.6)	95.0 (95.4)
Avg. Bias	1.7 % (1.8 %)	-0.1 % (-0.2 %)	3.0 % (3.6 %)	1.9 % (2.3 %)
Model RSD	1.3 % (1.2 %)	3.1 % (2.9 %)	1.7 % (2.3 %)	2.8 % (3.3 %)
Total UV-VIS Flux Downwards at Surface				
LBL Avg.	480.6	101.5	480.2	101.5
LBL RSD	0.7 %	1.1 %	0.1 %	0.5 %
Model Avg.	480.4 (480.2)	103.7 (103.8)	481.3 (481.0)	104.4 (104.5)
Avg. Bias	0.0 % (-0.1 %)	2.1 % (2.2 %)	0.2 % (0.2 %)	2.8 % (2.9 %)
Model RSD	1.1 % (1.2 %)	3.0 % (2.9 %)	1.0 % (1.0 %)	2.8 % (2.7 %)
Total Near-IR Downwards Flux at Surface ^d				
LBL Avg.	515.7	125.3	417.3	91.6
LBL RSD	0.8 %	0.6 %	2.4 %	7.0 %
Model Avg.	517.3 (518.6)	129.0 (129.3)	425.0 (428.4)	98.9 (100.0)
Avg. Bias	0.3 % (0.6 %)	2.9 % (3.2 %)	1.8 % (2.6 %)	8.0 % (9.2 %)
Model RSD	2.0 % (2.0 %)	2.5 % (3.7 %)	3.1 % (3.7 %)	3.8 % (7.2 %)

^a Flux units $W m^{-2}$; scaled normalized results as described in the text and Fig. 2.

^b Line-by-line (LBL) benchmarks (Avg. of Models #1 and #2) and non-LBL model results.

As in Case 1, we exclude Models # 14, 25, 27, 30, and 31 for the model statistics; in parenthesis all models are considered.

^c Avg. Bias is expressed as a percentage of the LBL Avg. RSD = standard deviation as a percentage of mean.

^d Near-IR is derived as a difference between broadband and UV-VIS.



AeroCom Radiative
Transfer Experiment

C. A. Randles et al.

Title Page

Abstract

Introduction

Conclusions

References

Tables

Figures

◀

▶

◀

▶

Back

Close

Full Screen / Esc

Printer-friendly Version

Interactive Discussion

**Table A4.** Case 2b: Summary of Statistics for Absorbing Aerosols^{a,b,c}

	SAW 30° SZA	SAW 75° SZA	TROP 30° SZA	TROP 75° SZA
Total (Direct + Diffuse) Broadband Flux Donwards at Surface				
LBL Avg.	954.1	206.2	857.7	174.5
LBL RSD	0.8%	0.8%	1.1%	3.8%
Model Avg.	958.2 (959.0)	212.6 (212.9)	869.2 (871.7)	184.4 (185.2)
Avg. Bias	0.4% (0.5%)	3.1% (3.3%)	1.3% (1.6%)	5.7% (6.2%)
Model RSD	0.8% (0.9%)	1.4% (2.4%)	1.0% (1.6%)	2.3% (4.1%)
Broadband Diffuse Flux at Upwards at TOA				
LBL Avg.	216.1	89.8	194.4	81.7
LBL RSD	1.4%	1.3%	1.3%	2.1%
Model Avg.	220.0 (220.4)	90.6 (90.5)	200.5 (201.8)	83.9 (84.3)
Avg. Bias	1.8% (2.0%)	0.9% (0.8%)	3.1% (3.8%)	2.8% (3.3%)
Model RSD	1.3% (1.3%)	2.8% (2.6%)	1.7% (2.5%)	2.6% (3.2%)
Total UV-VIS Flux Downwards at Surface				
LBL Avg.	452.4	89.0	452.0	89.0
LBL RSD	0.7%	1.1%	0.2%	0.5%
Model Avg.	453.4 (453.1)	91.5 (91.5)	454.1 (453.4)	92.1 (92.2)
Avg. Bias	0.2% (0.2%)	2.8% (2.9%)	0.5% (0.4%)	3.5% (3.6%)
Model RSD	1.3% (1.3%)	3.4% (3.3%)	1.1% (1.1%)	3.1% (3.1%)
Total Near-IR Downwards Flux at Surface ^d				
LBL Avg.	503.2	117.5	407.2	85.8
LBL RSD	0.8%	0.5%	2.4%	7.1%
Model Avg.	505.8 (507.0)	121.3 (121.5)	415.3 (418.6)	92.9 (93.6)
Avg. Bias	0.5% (0.7%)	3.2% (3.4%)	2.0% (2.8%)	8.3% (9.2%)
Model RSD	2.0% (1.9%)	2.4% (3.7%)	3.0% (3.7%)	3.8% (7.0%)

^a Flux units $W m^{-2}$; scaled normalized results as described in the text and Fig. 2.

^b Line-by-line (LBL) benchmarks (Avg. of Models #1 and #2) and non-LBL model results. We exclude Models # 14, 25, 27, 30, and 31 for the model statistics; in parenthesis all models are considered.

^c Avg. Bias is expressed as a percentage of the LBL Avg. RSD = standard deviation as a percentage of mean.

^d Near-IR is derived as a difference between broadband and UV-VIS.

AeroCom Radiative
Transfer Experiment

C. A. Randles et al.

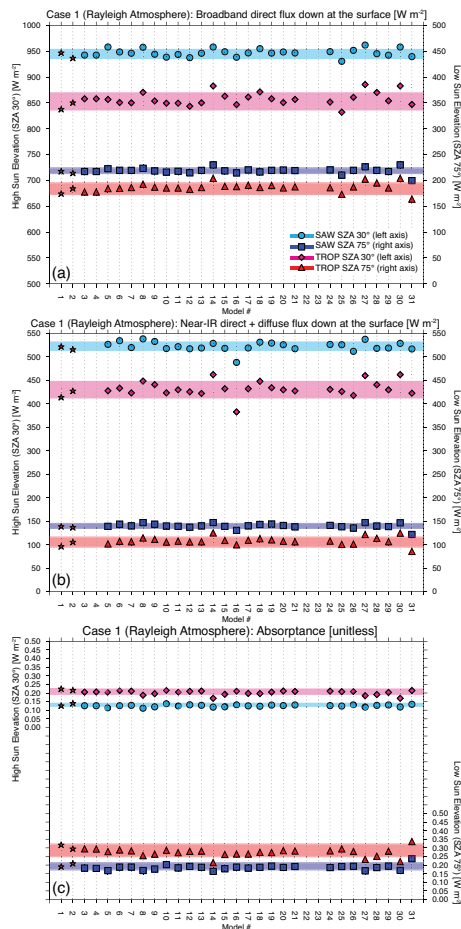


Fig. 2. Please see caption on next page.

Title Page

Abstract

Introduction

Conclusions

References

Tables

Figures

◀

▶

◀

▶

Back

Close

Full Screen / Esc

Printer-friendly Version

Interactive Discussion



**AeroCom Radiative
Transfer Experiment**

C. A. Randles et al.

[Title Page](#)[Abstract](#)[Introduction](#)[Conclusions](#)[References](#)[Tables](#)[Figures](#)[I◀](#)[▶I](#)[◀](#)[▶](#)[Back](#)[Close](#)[Full Screen / Esc](#)[Printer-friendly Version](#)[Interactive Discussion](#)

Fig. 2. Summary of results for Case 1 (Rayleigh Atmosphere) in W m^{-2} : **(a)** direct broadband flux down at the surface, **(b)** total (direct plus diffuse) near-IR down at the surface (calculated as the difference between broadband and UV-VIS), and **(c)** broadband absorptance calculated as in Eq. (1). Line-by-line results (stars) and non-LBL results (non-stars) are given as a function of Model # (Table 1). Shading represents the greater of ± 1 standard deviation from the LBL or non-LBL mean. Normalized results were scaled by the following broadband (UV-VIS) TOA downwards fluxes: 1189.28 (563.38) W m^{-2} for SZA 30° and 355.43 (168.37) W m^{-2} for SZA 75° . Models 22–23 are omitted because they are the same as Models 20–21 in the clear-sky case. Models 3–4 did not provide UV-VIS fluxes.

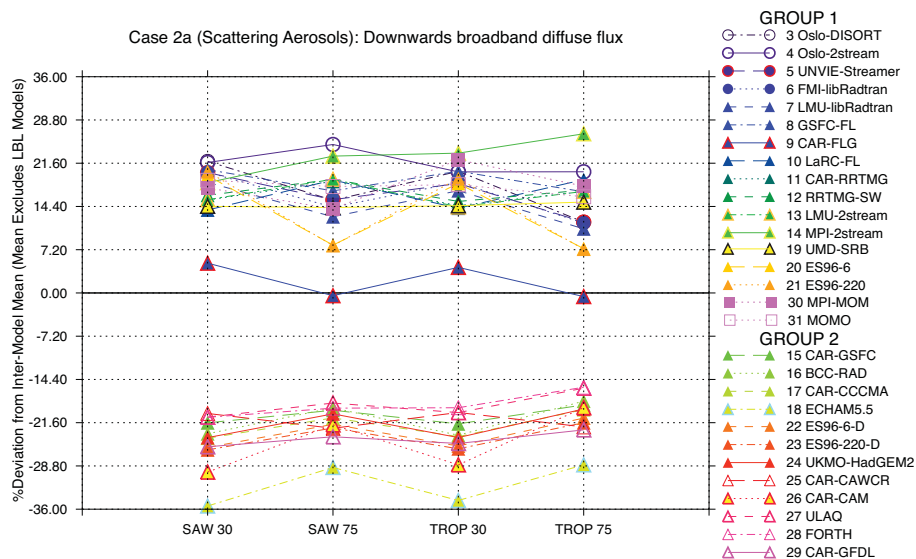


Fig. 3. As a function of standard atmosphere and solar zenith angle, the inter-model diversity in broadband diffuse flux down at the surface for Case 2a (Scattering Aerosols), expressed as a percent deviation from the non-LBL model mean (i.e. all models excluding #1 and 2). Figure A4 shows the inter-model differences in broadband direct and diffuse flux down at the surface for Case 2a and 2b.

AeroCom Radiative Transfer Experiment

C. A. Randles et al.

Title Page

Abstract

Introduction

Conclusions

References

Tables

Figures

◀

▶

◀

▶

Back

Close

Full Screen / Esc

Printer-friendly Version

Interactive Discussion



AeroCom Radiative Transfer Experiment

C. A. Randles et al.

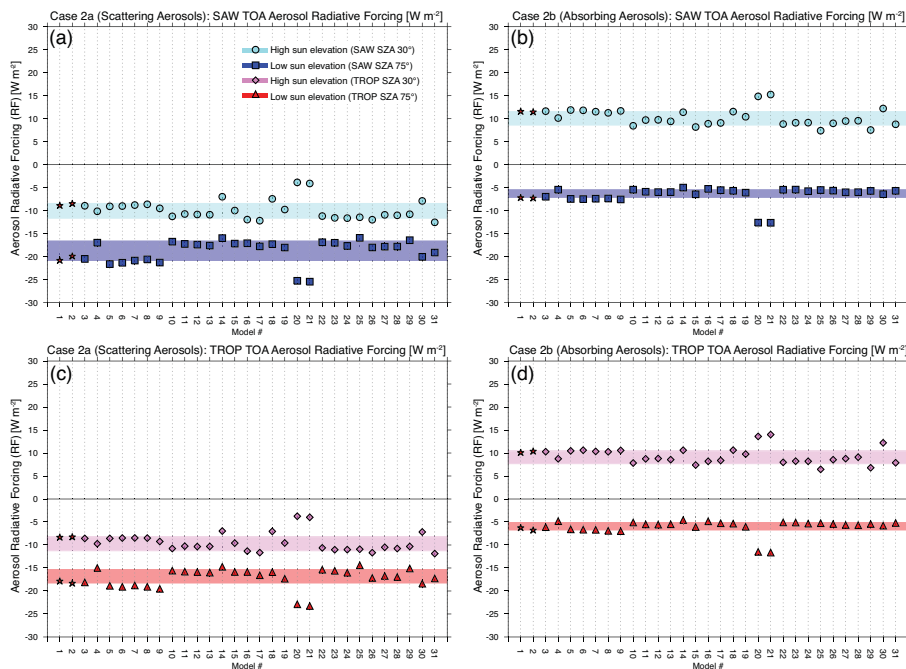


Fig. 4. Summary of results for top of the atmosphere aerosol radiative forcing (TOA RF) in W m^{-2} : **(a)** Case 2a (Scattering Aerosols) SAW, **(b)** Case 2b (Absorbing Aerosols) SAW, **(c)** Case 2a (Scattering Aerosols) TROP, and **(d)** Case 2b (Absorbing Aerosols) TROP. Line-by-line results (stars) and non-LBL results (non-stars) are given as a function of Model # (Table 1). Shading represents the greater of ± 1 standard deviation from the LBL or non-LBL mean (excluding Models 20–21). RF was calculated from Eq. (2) using normalized flux results that were scaled by the broadband downwards fluxes given in Fig. 2.

Title Page

Abstract

Introduction

Conclusions

References

Tables

Figures

◀

▶

◀

▶

Back

Close

Full Screen / Esc

Printer-friendly Version

Interactive Discussion



AeroCom Radiative Transfer Experiment

C. A. Randles et al.

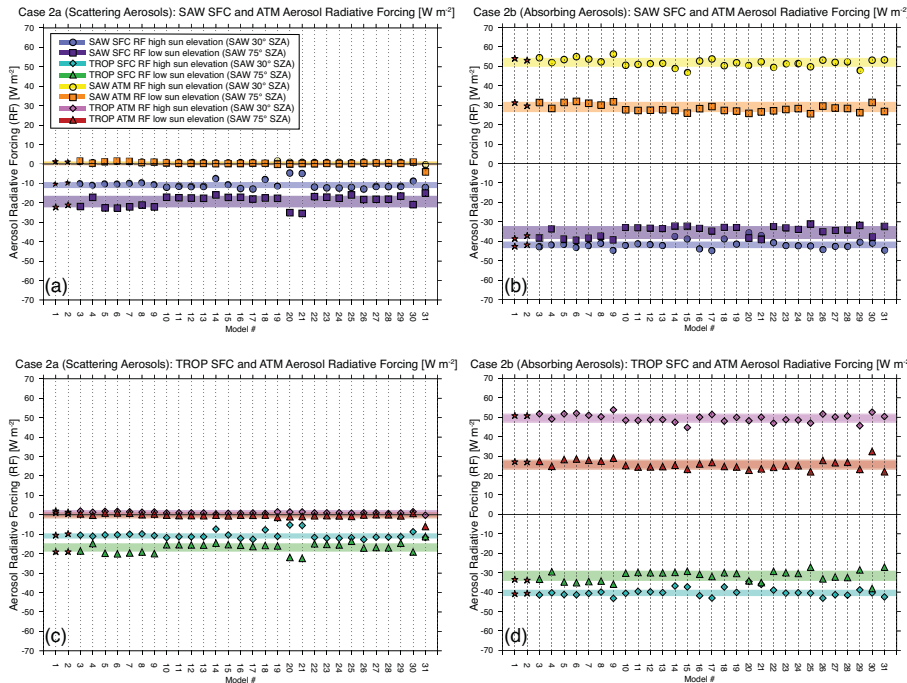


Fig. 5. Summary of results for surface and atmospheric aerosol radiative forcing (SFC and ATM RF) in $W m^{-2}$: **(a)** Case 2a (Scattering Aerosols) SAW, **(b)** Case 2b (Absorbing Aerosols) SAW, **(c)** Case 2a (Scattering Aerosols) TROP, and **(d)** Case 2b (Absorbing Aerosols) TROP. Line-by-line results (stars) and non-LBL results (non-stars) are given as a function of Model # (Table 1). Shading represents the greater of ± 1 standard deviation from the LBL or non-LBL mean. RF was calculated from Eq. (2) using normalized flux results that were scaled by the broadband TOA downwards fluxes given in Fig. 2. The ATM forcing is calculated as a residual from the TOA and SFC RF (i.e. $ATM\ RF = TOA\ RF - SFC\ RF$).

Title Page

Abstract Introduction

Conclusions References

Tables Figures

◀ ▶

◀ ▶

Back Close

Full Screen / Esc

Printer-friendly Version

Interactive Discussion



Title Page

Abstract

Introduction

Conclusions

References

Tables

Figures

◀

▶

◀

▶

Back

Close

Full Screen / Esc

Printer-friendly Version

Interactive Discussion

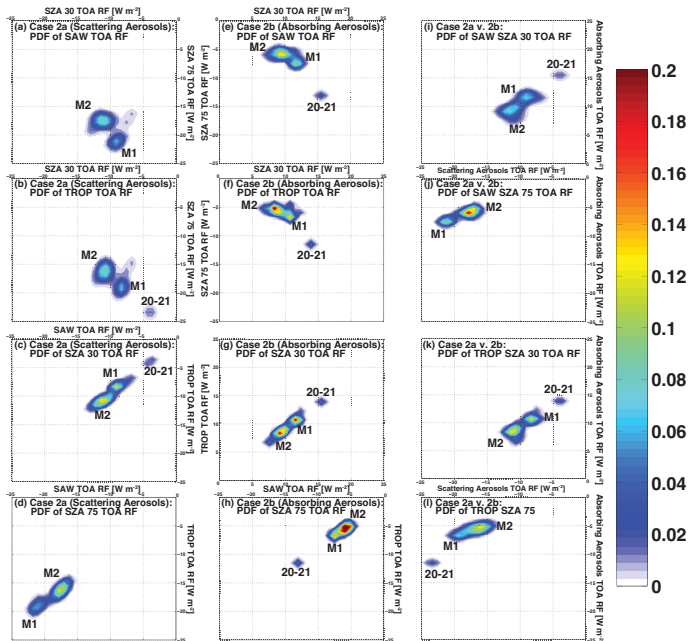


Fig. 6. Bi-variate probability density function (PDF) of TOA aerosol radiative forcing for Case 2a (Scattering Aerosols): **(a)** sub-Arctic winter as a function of solar zenith angle, **(b)** the tropics as a function of solar zenith angle, **(c)** SZA 30° as a function of prescribed atmosphere, and **(d)** SZA 75° as a function of prescribed atmosphere. PDFs of TOA RF for Case 2b (Absorbing Aerosols): **(e)** sub-Arctic winter as a function of solar zenith angle, **(f)** the tropics as a function of solar zenith angle, **(g)** SZA 30° as a function of prescribed atmosphere, and **(h)** SZA 75° as a function of prescribed atmosphere. PDFs of the effect of aerosol absorption (i.e. Case 2a vs. Case 2b) for given conditions: **(i)** SAW SZA 30°, **(j)** SAW SZA 75°, **(k)** TROP SZA 30°, and **(l)** TROP SZA 75°. The PDFs are calculated such that the volume is normalized to unity. Red shading indicates a large concentration of models. Group M1 includes Models #3, and 5–9. Group M2 includes most other models (except Models #20–21).

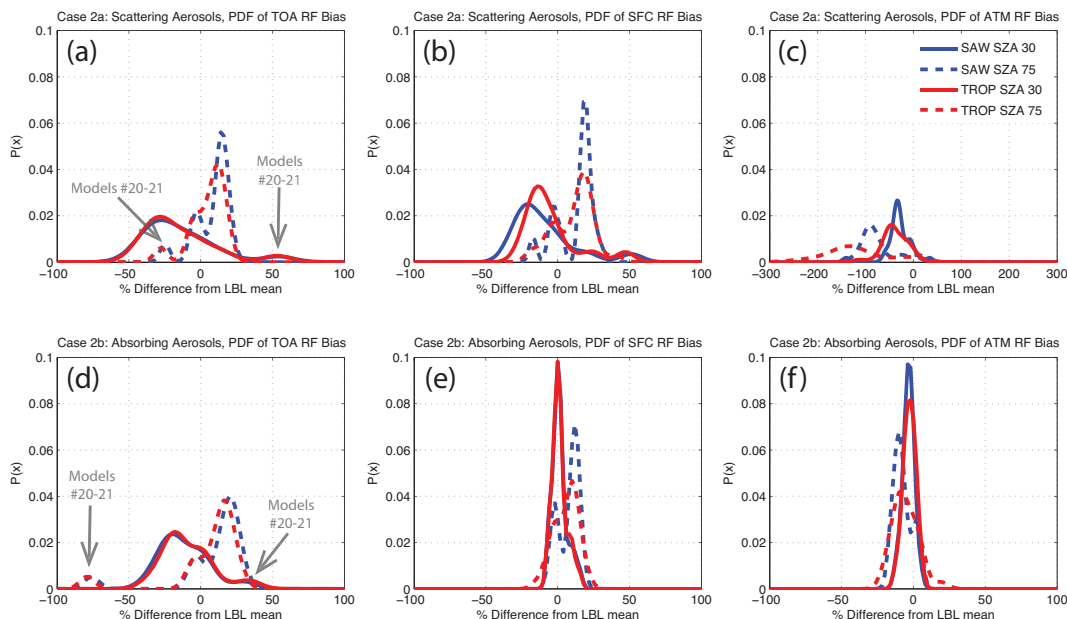


Fig. 7. For each solar zenith angle and prescribed atmosphere combination, the probability density function $P(x)$ for **(a)** scattering aerosol (Case 2a) TOA RF bias, **(b)** scattering aerosol (Case 2a) SFC RF bias, **(c)** scattering aerosol (Case 2a) ATM RF bias, **(d)** absorbing aerosol (Case 2b) TOA RF bias, **(e)** absorbing aerosol (Case 2b) SFC RF bias, and **(f)** absorbing aerosol (Case 2b) ATM RF bias. Biases are calculated as the percent deviation of each non-LBL model from the LBL mean: $\text{Bias} = 100 \times \frac{\mu_{\text{model}} - \mu_{\text{LBL}}}{\mu_{\text{LBL}}}$ where μ is the mean. Negative biases imply too much radiative cooling or too little radiative warming; positive biases imply too little radiative cooling or not enough radiative cooling (too much radiative warming). The small peaks in the PDF are from Models #20 and 21 which use the Eddington approximation (as opposed to the δ -Eddington approximate used in the counterpart Models #22 and 23).

[Title Page](#)
[Abstract](#)
[Introduction](#)
[Conclusions](#)
[References](#)
[Tables](#)
[Figures](#)
[◀](#)
[▶](#)
[◀](#)
[▶](#)
[Back](#)
[Close](#)
[Full Screen / Esc](#)
[Printer-friendly Version](#)
[Interactive Discussion](#)


AeroCom Radiative Transfer Experiment

C. A. Randles et al.

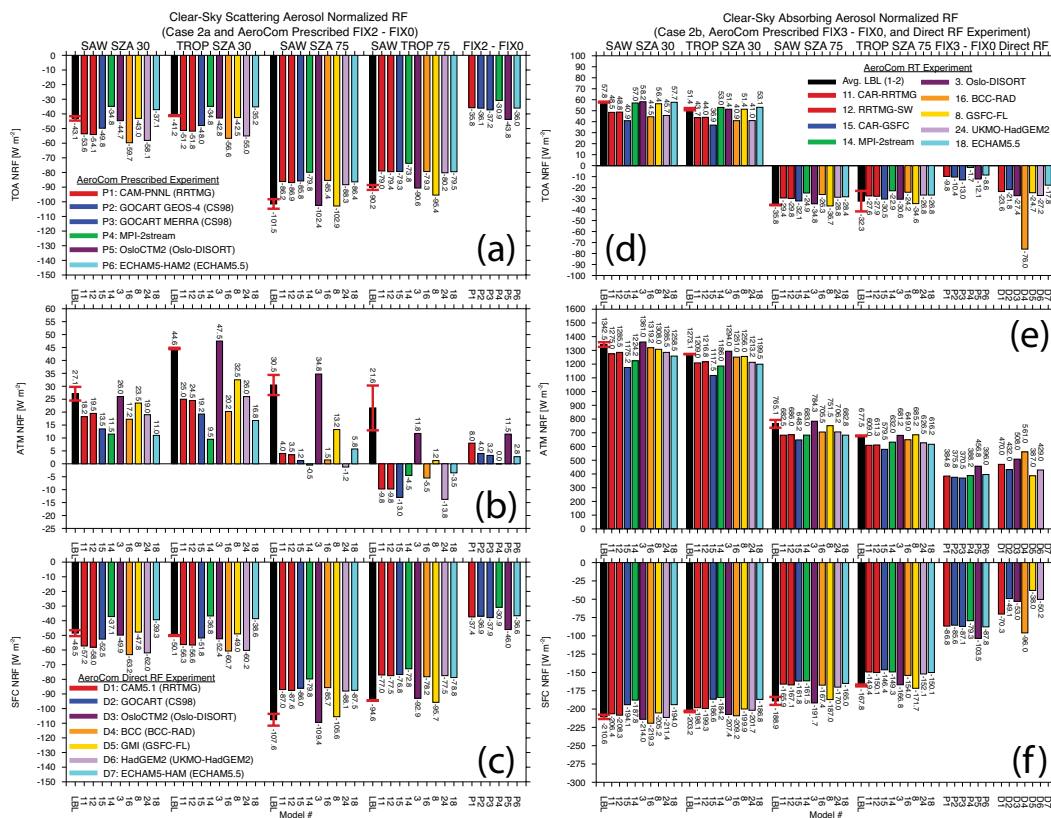


Fig. 8. Please see caption on next page.

Discussion Paper | Discussion Paper | Discussion Paper | Discussion Paper

Title Page

Abstract Introduction

Conclusions References

Tables Figures

◀ ▶

◀ ▶

Back Close

Full Screen / Esc

Printer-friendly Version

Interactive Discussion



Fig. 8. Summary of clear-sky (cloud-free) aerosol direct normalized radiative forcing (NRF) from the present study (AeroCom Radiative Transfer Experiment), the AeroCom Prescribed Experiment (Stier et al., 2012), and the AeroCom Direct Radiative Forcing Experiment (Myhre et al., 2012). NRF is defined as the TOA and SFC RF divided by the AOD and the ATM RF divided by the absorption optical depth ($AAOD = (1 - SSA) \times AOD$). Results from Stier et al. (2012) and Myhre et al. (2012) come from Table 3 of each study. Models which use similar radiative transfer schemes have the same color bar, and the NRF is given above or below each bar. **(a–c)** Comparison of TOA, ATM, and SFC NRF results from Case 2a (Scattering Aerosols) versus the FIX2–FIX0 (Scattering Aerosols) Prescribed experiment; aerosol properties in these two studies are identical except in the Prescribed experiment host models simulate their own surface albedo and gaseous absorbers. Also, the results for FIX2–FIX0 are global and diurnal average results. **(d–f)** Comparison of TOA, ATM, and SFC NRF results from Case 2b (Absorbing Aerosols) versus the global average result from the FIX3–FIX0 (Absorbing Aerosols) Prescribed experiment, which also has the same specified aerosol optical properties (but not the same albedo or gaseous absorbers). We also include results from the AeroCom Direct Radiative Forcing Experiment. Note that in the global and diurnally averaged AeroCom Direct Radiative Forcing Experiment results, models are run in their standard configuration, simulating all included aerosol processes. The mean SSA for the seven models here was 0.94 with a standard deviation of 0.02, and the mean global AOD was 0.03 with a standard deviation of 0.01 (Table 3; Myhre et al., 2012). For both this study and the Prescribed Experiment results, $AOD = 0.2$ and $AAOD = 0.04$.

AeroCom Radiative Transfer Experiment

C. A. Randles et al.

[Title Page](#)[Abstract](#)[Introduction](#)[Conclusions](#)[References](#)[Tables](#)[Figures](#)[◀](#)[▶](#)[◀](#)[▶](#)[Back](#)[Close](#)[Full Screen / Esc](#)[Printer-friendly Version](#)[Interactive Discussion](#)

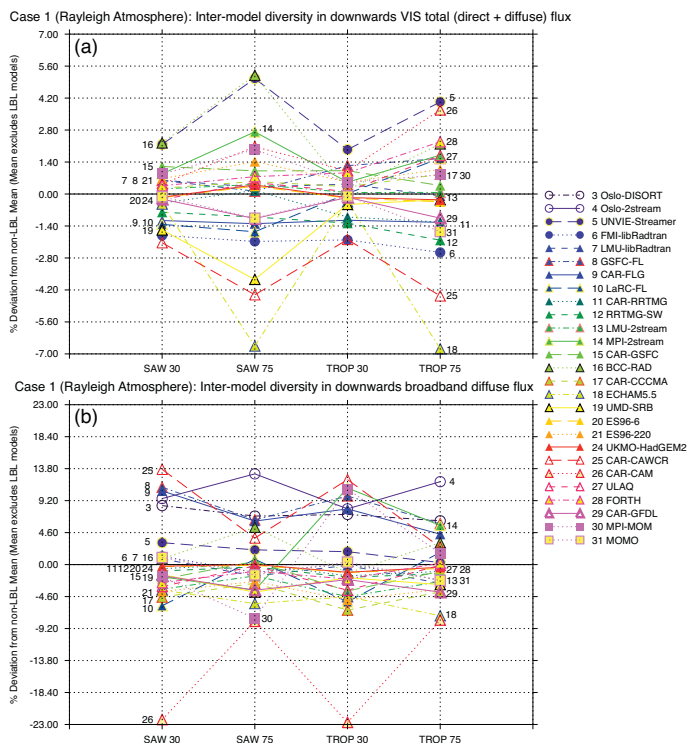


Fig. A1. Inter-model diversity in UV-VIS and broadband diffuse flux down at the surface for the Rayleigh atmosphere (Case 1) expressed as a percent deviation from the non-LBL model mean (i.e. the mean from all models excluding #1, 2, 22 and 23). Note that Models #22–23 are the same as #20–21 in Case 1. As a function of standard atmosphere and solar zenith angle: **(a)** downwards UV-VIS at the surface and **(b)** downwards diffuse broadband flux. Appendix Figures A2 and A3 show the bias of UV-VIS and broadband diffuse down fluxes relative to the LBL benchmarks, respectively.

Title Page

Abstract

Introduction

Conclusions

References

Tables

Figures

◀

▶

◀

▶

Back

Close

Full Screen / Esc

Printer-friendly Version

Interactive Discussion



AeroCom Radiative
Transfer Experiment

C. A. Randles et al.

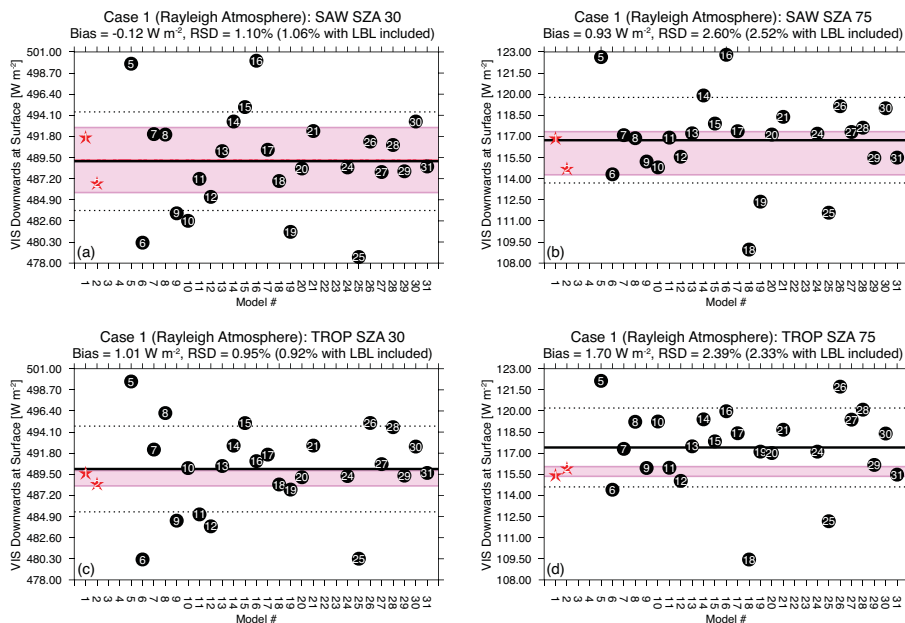


Fig. A2. UV-VIS flux down at the surface in Case 1 (Rayleigh atmosphere) for **(a)** SAW 30° , **(b)** SAW 75° , **(c)** TROP 30° , and **(d)** TROP 75° . LBL results are given as stars; non-LBL models are black circles. The pink shading indicates ± 1 standard deviation from the LBL mean. The non-LBL mean is given as the thick black line with ± 1 standard deviation indicated by dotted black lines. The model bias relative to the LBL-mean is given as well as the relative standard deviation (RSD) excluding (and in parenthesis including) the LBL models. See Appendix Table A2 for additional statistics.

Title Page

Abstract

Introduction

Conclusions

References

Tables

Figures

◀

▶

◀

▶

Back

Close

Full Screen / Esc

Printer-friendly Version

Interactive Discussion



AeroCom Radiative
Transfer Experiment

C. A. Randles et al.

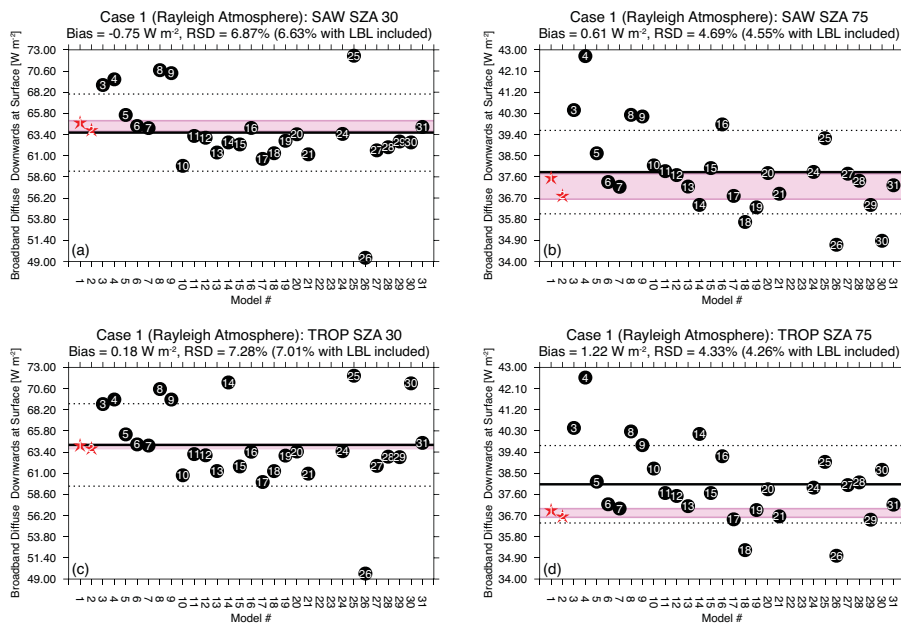


Fig. A3. The same as Fig. A2 except for broadband diffuse flux down at the surface in the Rayleigh atmosphere (Case 1). See Appendix Table A2 for additional statistics.

Title Page

Abstract

Introduction

Conclusions

References

Tables

Figures

◀

▶

◀

▶

Back

Close

Full Screen / Esc

Printer-friendly Version

Interactive Discussion



AeroCom Radiative
Transfer Experiment

C. A. Randles et al.

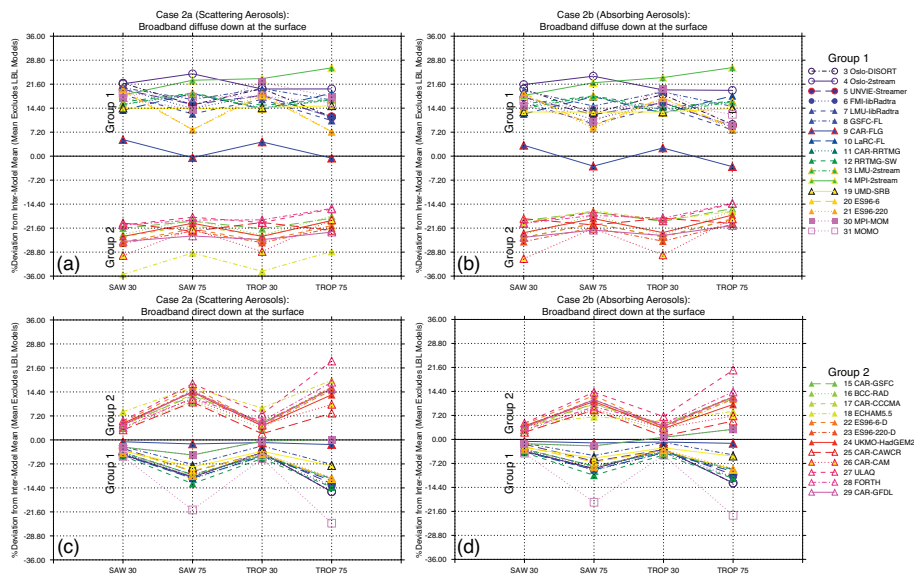


Fig. A4. Inter-model diversity in broadband diffuse and direct flux down at the surface expressed as a percent deviation from the non-LBL model mean (i.e. μ from all models excluding #1 and 2). As a function of standard atmosphere and solar zenith angle the broadband diffuse flux down at the surface is given for: **(a)** Case 2a (Scattering Aerosols) and **(b)** Case 2b (Absorbing Aerosols). Corresponding diversity for the broadband direct flux down at the surface is given for: **(c)** Case 2a (Scattering Aerosols) and **(d)** Case 2a (Absorbing Aerosols). Note that Fig. A4a is the same as Fig. 3.

Title Page

Abstract

Introduction

Conclusions

References

Tables

Figures

◀

▶

◀

▶

Back

Close

Full Screen / Esc

Printer-friendly Version

Interactive Discussion



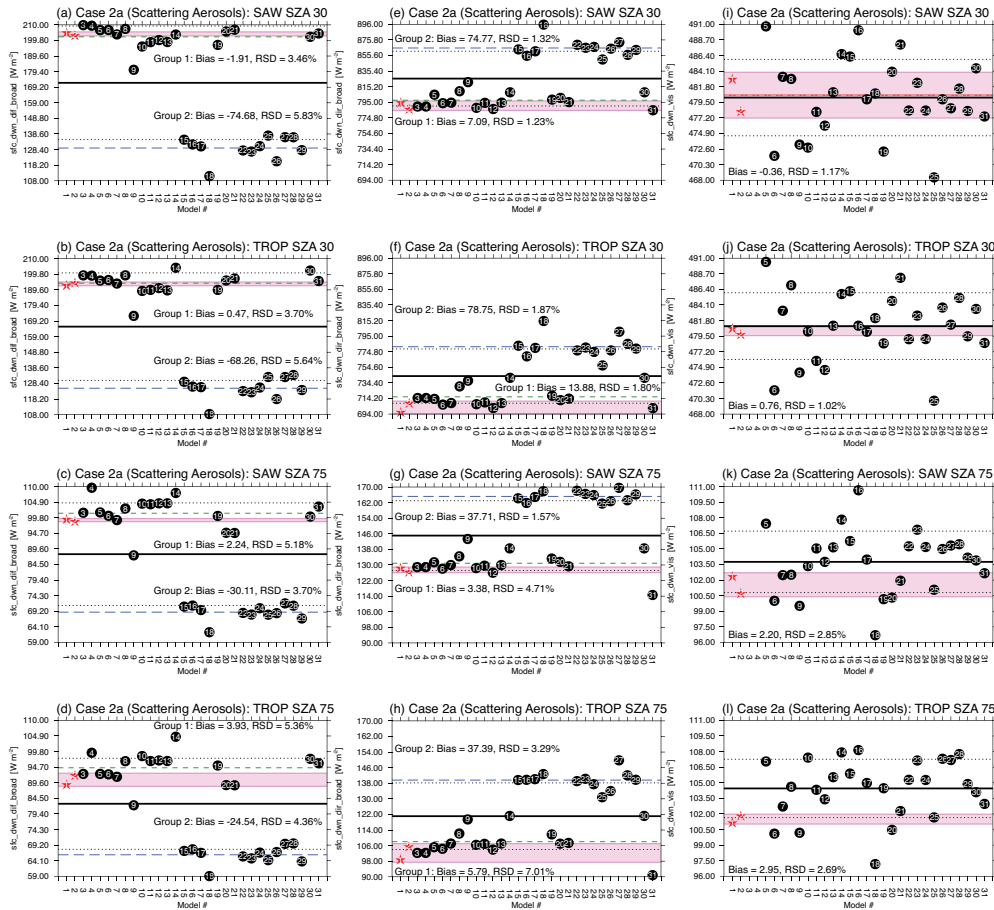


Fig. A5. Please see caption on next page.

Title Page

Abstract

Introduction

Conclusions

References

Tables

Figures

◀

▶

◀

▶

Back

Close

Full Screen / Esc

Printer-friendly Version

Interactive Discussion



Fig. A5. Broadband diffuse (**a–d**), broadband direct (**e–h**), and UV-VIS (direct + diffuse) (**i–l**) flux down at the surface in Case 2a (Scattering Aerosols) as a function of atmosphere and solar zenith angle. LBL results are given as stars; non-LBL models are black circles. The pink shading indicates ± 1 standard deviation from the LBL mean.

5 The non-LBL mean is given as the thick black line with ± 1 standard deviation indicated by dotted black lines. For UV-VIS fluxes, the absolute model bias relative to the LBL-mean is given as well as the RSD excluding the LBL models. Green and blue lines indicate the multi-model averages for the groups described in Table 4 for broadband fluxes; statistics are given for each group. Group 1 (green) includes Models # 3–14,
10 19–21, and 30–31; Group 2 (blue) includes Models #15–18 and 22–29.

AeroCom Radiative Transfer Experiment

C. A. Randles et al.

Title Page	
Abstract	Introduction
Conclusions	References
Tables	Figures
◀	▶
◀	▶
Back	Close
Full Screen / Esc	
Printer-friendly Version	
Interactive Discussion	



AeroCom Radiative
Transfer Experiment

C. A. Randles et al.

Title Page

Abstract

Introduction

Conclusions

References

Tables

Figures

◀

▶

◀

▶

Back

Close

Full Screen / Esc

Printer-friendly Version

Interactive Discussion

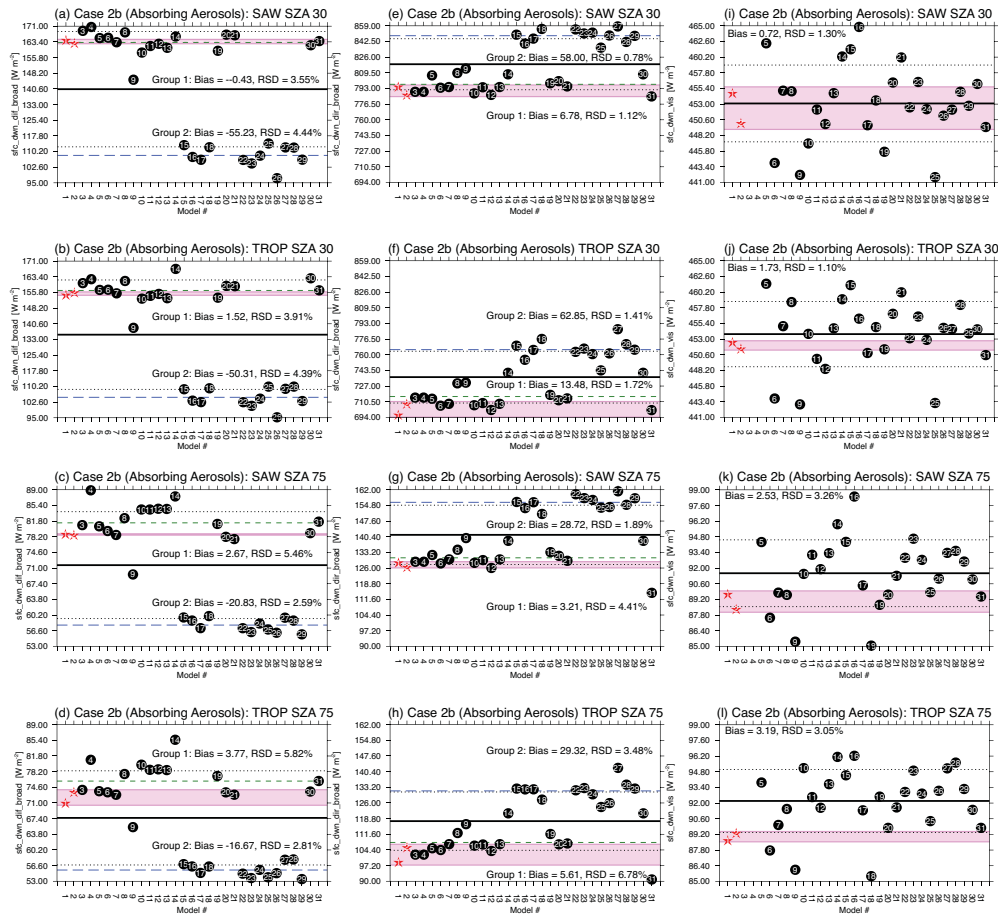


Fig. A6. The same as Fig. A5 except for Case 2b (Absorbing Aerosols).